

# I N D E X

Quarterly Report .....	1
<b>【Confirmation by CEO, etc.】</b> .....	2
I. Company Overview .....	3
1. Company overview .....	3
2. Company history.....	3
3. Changes in capital stock .....	3
4. Total number of shares, etc.....	3
5. Matters related to the articles of incorporation.....	3
II. Business Description .....	4
1. Business overview .....	4
2. Main products and services .....	4
3. Raw materials and production facilities.....	4
4. Status of sales and orders .....	5
5. Risk management and derivatives transactions .....	6
6. Major contracts and research and development activities.....	9
7. Other details .....	10
III. Financial Matters .....	15
1. Summary of financial information.....	15
2. Consolidated financial statements .....	16
2-1. Consolidated Statement Of FinancialPosition.....	16
2-2. Consolidated Income Statement.....	18
2-3. Consolidated Statement Of ComprehensiveIncome .....	19
2-4. Consolidated Statement Of ChangesInEquity .....	19
2-5. Consolidated Statement Of CashFlows.....	21
3. Notes to the consolidated financial statements .....	22
1. Corporate information and statement of IFRS compliance (Consolidated) .....	22
2. Accounting policies, changes in accounting estimates and errors (Consolidated) .....	23
3. Significant judgements and sources of estimation uncertainty (Consolidated).....	24
4. Operating segments (Consolidated) .....	24
5-1. Financial instruments – Financial instruments by category (Consolidated) .....	25
5-2. Financial instruments – Fair value measurement (Consolidated).....	28
5-3. Financial instruments – Derivatives (Consolidated) .....	30
6. Cash and cash equivalents (Consolidated) .....	33
7. Short-term deposits (Consolidated) .....	34
8. Trade and other receivables (Consolidated) .....	34
9. Other financial assets and other current financial liabilities (Consolidated) .....	35
10. Other assets (Consolidated) .....	36
11. Inventories (Consolidated) .....	37
12. Interests in other entities (Consolidated) .....	38
13. Property, plant and equipment (Consolidated) .....	39
14. Intangible assets (Consolidated) .....	40
15. Leases (Consolidated) .....	41
16. Trade and other payables (Consolidated).....	42
17-1. Other liabilities (Consolidated) .....	43
17-2. Other liabilities – Other provisions (Consolidated).....	44

18. Share capital, reserves and other equity interest (Consolidated).....	45
19. Other Elements Of Stockholder's Equity (Consolidated) .....	46
20. Statement of Appropriation of Retained Earnings (Consolidated).....	46
21. Earnings per share (Consolidated).....	48
22. Finance income and expense (Consolidated) .....	49
23. Other income and expense (Consolidated) .....	51
24-1. Operating income (Consolidated).....	52
24-2. Operating income - Selling, general and administrative expense (Consolidated).....	53
25. Employee benefits (Consolidated) .....	55
26. Income taxes (Consolidated).....	57
27. Cash flow statement (Consolidated) .....	58
28. Restricted financial assets (Consolidated).....	64
29. Related party (Consolidated).....	64
30. Contingent liabilities, contingent asset and commitments (Consolidated) .....	68
4. Separate financial statements.....	69
4-1. Statement Of FinancialPosition .....	69
4-2. Income Statement .....	71
4-3. Statement Of ComprehensiveIncome .....	71
4-4. Statement Of ChangesInEquity .....	72
4-5. Statement Of CashFlows .....	72
5. Notes to the separate financial statements.....	74
1. Company overview .....	74
2. Accounting policies, changes in accounting estimates and errors .....	74
3. Significant judgements and sources of estimation uncertainty.....	75
4-1. Financial instruments.....	75
4-2. Financial instruments - Fair value measurement .....	79
4-3. Financial instruments - Derivatives .....	81
5. Cash and cash equivalents .....	84
6. Short-term deposits .....	84
7. Trade and other receivables .....	85
8. Other financial assets and other current financial liabilities .....	86
9. Other assets .....	87
10. Inventories .....	87
11. Interests in other entities .....	88
12. Property, plant and equipment .....	89
13. Intangible assets .....	90
14. Leases .....	91
15. Trade and other payables .....	92
16-1. Other liabilities .....	93
16-2. Other provisions, contingent liabilities and contingent assets .....	94
17. Share capital, reserves and other equity interest.....	95
18. Other Elements Of Stockholder's Equity .....	96
19. Statement of Appropriation of Retained Earnings.....	96
20. Earnings per share.....	97
21. Finance income and expense .....	99
22. Other income and expense.....	100
23-1. Operating income.....	102

23-2. Operating income.....	103
24. Employee benefits .....	104
25. Income taxes.....	107
26. Cash flow statement .....	108
27. Restricted financial assets .....	114
28. Related party.....	115
29. Contingent liabilities, contingent asset and commitments .....	119
6. Matters related to dividends.....	120
7. Matters related to financing through issuance of securities.....	121
7-1. Performance of financing through securities issuance.....	121
7-2. Performance of fund utilization from securities issuance .....	123
8. Other financial matters.....	123
IV. Director’s Management Assessment and Analysis Opinion .....	128
V. Accounting Auditor’s Audit Opinion, etc. ....	129
1. Matters related to external audit.....	129
2. Matters related to internal control .....	131
VI. Matters Related to Corporate Bodies Including the Board of Directors, etc. ....	132
1. Matters related to the board of directors .....	132
2. Matters related to the audit system .....	132
3. Matters related to general shareholders’ meeting, etc. ....	132
VII. Matters Related to Shareholders.....	133
VIII. Matters Related to Executives and Employees, etc.....	134
1. Status of executives and employees, etc.....	134
2. Executive remuneration, etc.....	135
IX. Matters Related to Affiliated Companies, etc. ....	136
X. Details of Transactions with Major Shareholders, etc. ....	137
XI. Other Matters Necessary for Investor Protection .....	138
1. Progress and changes of disclosure information.....	138
2. Matters related to contingent liabilities, etc. ....	138
3. Matters related to sanctions, etc.....	138
4. Other matters, including material matters occurred after the document preparation date ....	138
XII. Detailed Table .....	140
1. Status of subsidiaries subject to consolidation (Detailed).....	140
2. Status of affiliates (Detailed) .....	140
3. Status of investment in other corporations (Detailed) .....	140
<b>【Confirmation from Experts】</b> .....	140
1. Confirmation from experts.....	140
2. Relationship to experts .....	140

# Quarterly Report

(제 27 기)

Fiscal year            2025.01.01            From  
                                 2025.09.30            To

금융위원회

한국거래소 귀중

2025년    11월    14일

Type of entity subject to submission:            Stock-listed corporations

Occurrence of reasons for relief:            N/A

회    사    명 :            주식회사 엘엑스세미콘

대 표 이 사 :            이윤태

본 점 소 재 지 :            대전광역시 유성구 테크노2로 222

(전 화) 02-6924-3114

(홈페이지) <https://www.lxsemicon.com>

작 성 책 임 자 :            (직 책) 재경담당            (성 명) 이혁주

(전 화) 02-6924-3114

# 【Confirmation by CEO, etc.】

## 대표이사 등의 확인 · 서명

### 확 인 서

당사의 대표이사 및 신고업무담당이사로서 이 공시서류의 기재내용에 대해 상당한 주의를 다하여 직접 확인 · 검토한 결과, 중요한 기재사항의 기재 또는 표시의 누락이나 허위의 기재 또는 표시가 없고, 이 공시서류에 표시된 기재 또는 표시사항을 이용하는 자의 중대한 오해를 유발하는 내용이 기재 또는 표시되지 아니하였음을 확인합니다.

또한, 당사는 「주식회사의 외부감사에 관한 법률」 제8조의 규정에 따라 내부회계관리제도를 마련하여 운영하고 있음을 확인합니다.

2025. 11. 14 .

주식회사 LX세미콘

대표이사 이 윤 태 (서명)

신고업무담당이사 김 훈 (서명)

# I. Company Overview

## 1. Company overview

회사의 개요는 기업공시서식 작성기준에 따라 분기보고서에 기재하지 않습니다.  
(반기·사업보고서에 기재 예정)

## 2. Company history

회사의 연혁은 기업공시서식 작성기준에 따라 분기보고서에 기재하지 않습니다.  
(사업보고서에 기재 예정)

## 3. Changes in capital stock

자본금 변동사항은 기업공시서식 작성기준에 따라 분기보고서에 기재하지 않습니다.(사업보고서에 기재 예정)

## 4. Total number of shares, etc.

주식의 총수 등은 기업공시서식 작성기준에 따라 분기보고서에 기재하지 않습니다.  
(반기·사업보고서에 기재 예정)

## 5. Matters related to the articles of incorporation

정관에 관한 사항은 기업공시서식 작성기준에 따라 분기보고서에 기재하지 않습니다.(반기·사업보고서에 기재 예정)

## II. Business Description

### 1. Business overview

당사는 팹리스 기업으로 Display Panel을 구동하는 핵심부품의 설계 및 제조, 판매를 주요 사업으로 영위하고 있는 시스템 반도체 기업입니다.

Display Panel 구동 부품 중 자사는 Driver-IC, Timing Controller(T-Con), Power Management Integrated Circuit(PMIC)제품을 중심으로 성장하고 있으며, 신규 성장동력으로 MCU, 방열기판 사업을 추진하여 사업 포트폴리오 다변화를 꾀하고 있습니다.

당사의 주요 제품은 패널을 구동하는 Driver-IC, T-Con 등이며, 주요 제품인 Driver-IC의 25년 3분기말 누적 매출액은 89.23% 입니다. 당사의 매출 중 수출이 차지하는 비중은 25년 3분기말 누적 기준 매출액의 99.14% 입니다.

당사는 고객사에서 제품의 종류 및 사양에 대한 요청에 부합하도록 반도체를 설계하며, 설계된 반도체는 생산능력과 기술력이 충분한 파운드리 및 조립/패키징 전문업체에 위탁을 통해 생산하여 고객사에 납품하고 있습니다.

### 2. Main products and services

[기준일: 2025년 9월 30일]

(단위 : 억원)

사업부문	품목	제품 설명	주요제품	제27기 3분기		제26기		제25기	
				매출액	비율(%)	매출액	비율(%)	매출액	비율(%)
반도체	System IC	패널 구동 IC 외	Driver - IC	11,147	89.23	16,724	89.64	17,485	91.96
			Driver - IC 외	1,345	10.77	1,932	10.36	1,529	8.04
합계				12,492	100.00	18,656	100.00	19,014	100.00

### 3. Raw materials and production facilities

#### 가. 주요 원재료

[기준일: 2025년 9월 30일]

(단위 : 억원)

원재료명	매입액	주요매입처
WAFER 외	6,310	TSMC, SK hynix system ic(Wuxi), 엘지이노텍(주) 등
가공비 외	2,531	엘비세미콘(주), Chipbond 등

당사는 반도체 제조공정을 외주위탁 가공하는 팹리스(Fabless) 업체로 Wafer 매입 비용은 경영실적에 중요한 요소이며 민감한 정보이기 때문에 Wafer 단가 및 가격 변동 추이의 기재를 생략합니다.

#### 나. 생산능력 및 설비

당사는 팹리스(Fabless) 기업으로 반도체 설계 이후의 제조 공정은 외부공정업체를 활용하고 있으며, 미래 성장사업으로 구축한 차량용 방열기판 사업은 당사 시흥캠퍼스(경기도 시흥시 소재)에 3천 평 규모의 방열기판 공장을 준공하여 25년 4월부터 방열기판을 양산하고 있습니다.

친환경 차량용 방열기판은 전력소자의 열을 외부로 확산시키기 위해 높은 열 전도성을 갖는 것이 특징이며, 전기차 시장과 함께 빠르게 성장할 것으로 전망되고 있습니다. 현재 방열기판 공장의 생산능력(CAPA, 캐파)은 연 25만장으로 추후 50만장으로 생산능력을 확대할 계획입니다.

#### 다. 외주생산에 관한 사항

당사는 반도체 설계 이후의 제조 공정은 외부공정업체를 활용하고 있습니다. 외주공정은 크게 파운드리(Wafer 위탁생산), OSAT(테스트 & 패키징)으로 분류할 수 있으며, 당사가 활용하는 외주공정업체는 장기간 당사와 거래 관계가 있는 기업으로, 안정적으로 고품질의 제품 제조가 가능한 기업을 선정하여 위탁운영하고 있습니다.

## 4. Status of sales and orders

### 가. 매출실적

[기준일: 2025년 9월 30일]

(단위 : 억원)

사업부문	매출유형	품목	제27기 3분기	제26기	제25기	
반도체	제품 및 기타	System IC	수출	12,385	18,445	18,909
			내수	107	211	105
합계			계	12,492	18,656	19,014

#### 나. 판매 경로 및 방법, 전략, 주요 매출처

##### (1) 판매 및 양산 지원 조직

당사는 당분기말 현재 전략마케팅부문 산하에 국내영업담당과 해외영업담당으로 구성된 영업조직을 갖추고 있으며, 해당 영업조직에서 국내외 판매를 담당하고 있습니다.

## (2) 판매 경로

당사는 국내외 매출 모두 거래처 주문 시 제조 및 판매하는 형태로 이루어져 있으며, 당사는 고객사의 요청에 맞춰 개발 단계에서부터 고객사에서 요구하는 사양 및 특성에 맞게 제품 개발을 수행하고 있으며, 주요 외주업체에서 생산하여 고객사로 납품되고 있습니다.

구분	판매 경로
국내매출	거래처 주문→(주)LX세미콘(외주생산→출고→납품)
국외매출	

주) 국내매출은 대한민국 내에서 판매되는 매출입니다.

## (3) 판매 전략

당사는 고객 기반 강화 및 신규 고객 확대를 위해 신제품 및 신기술 개발과 아울러 차별화된 고객지원을 통하여 시장 우위를 유지해 나갈 수 있을 것으로 판단됩니다. 또한, 고객사에서 요구하는 최적의 솔루션 제품을 고객 맞춤형으로 제공함으로써 시장 지위 유지가 가능할 것으로 예상합니다.

## (4) 주요 매출처

단일 외부고객으로부터의 매출액이 당사 매출액의 10% 이상을 차지하는 고객은 2개사(社)로 25년 3분기말 누적 매출액은 각각 6,902억원, 3,441억원 입니다.

### 다. 수주 상황

당사가 생산하는 디스플레이용 구동칩은 디스플레이 패널의 크기 및 특성에 따라 종류가 다양합니다. 주요 패널업체 구매 정책의 특성상 중장기적인 수주계약이 아닌 통상 10주 정도 주기로 필요한 물량의 발주가 이루어지며 수시로 추가 물량이 발주되고 있습니다.

## 5. Risk management and derivatives transactions

연결실체는 금융상품과 관련하여 신용위험, 유동성위험 및 시장위험에 노출되어 있습니다. 연결실체가 노출되어 있는 위험에 대한 정보와 연결실체의 목표, 정책, 위험 평가 및 관리 절차 그리고 자본관리에 대해서는 주석사항에 공시하고 있으며 추가적인 계량적 정보에 대해서도 본 연결재무제표 전반에 걸쳐서 공시되어 있습니다.

### 가. 신용위험관리

신용위험이란 고객이나 거래 상대방이 금융상품에 대한 계약상의 의무를 이행하지 않아 연결실체가 재무손실을 입을 위험을 의미하며 주로 거래처에 대한 매출채권과 투자자산에서

발생합니다. 채무불이행으로 인한 재무적 손실을 경감시키기 위하여 신용도가 일정 수준 이상인 거래처와 거래하고 있으며, 신용위험 노출 및 거래처의 신용등급을 주기적으로 검토하고 있습니다. 신용위험은 금융기관과의 거래에서도 발생할 수 있으며 이러한 위험을 줄이기 위해 신용등급이 높은 은행들에 대해서만 거래하는 것을 원칙으로 하고 있습니다. 신탁예금 등 신용위험이 발생할 가능성이 많은 예금은 담당 임원의 승인을 득한 후에 신규 거래를 하도록 규정하고 있습니다. 당분기말 연결실체의 신용위험에 대한 노출 정도는 현금 및 현금성 자산, 단기금융상품, 매출채권, 그리고 기타채권을 포함해 최대 8,058억원 입니다.

## 나. 유동성 위험관리

회사에 있어서 적정 유동성 유지 및 관리는 경영상 매우 중요한 사항입니다. 당사는 현재 무차입 경영을 유지하고 있으며 적절한 현금 수준도 확보되어 있습니다. 또한 당사는 주기적인 자금수지 예측, 필요 현금 수준 추정 및 수입, 지출 관리 등을 통하여 적정 유동성 유지 및 관리에 만전을 다하고 있습니다.

이와는 별도로 유동성위험에 대비하여 항상 조기 유동성 확보를 위하여 금융시장과 원활한 커뮤니케이션을 진행하고 있으며 풍부한 유동성 확보를 위하여 금융기관으로부터 추가적인 차입한도 확보 등을 적극적으로 검토하고 있습니다.

## 다. 시장위험관리

시장위험이란 시장가격의 변동으로 인하여 금융상품의 공정가치나 미래현금흐름이 변동할 위험을 의미합니다.

### (1) 환위험

연결실체는 기능통화인 원화 외의 통화로 표시되는 영업수익 및 영업비용에 대해 환위험에 노출되어 있습니다. 이러한 거래들이 표시되는 주된 통화는 미국 달러(USD) 입니다.

당분기말과 전기말 현재 기능통화 이외의 주된 통화로 표시된 화폐성자산 및 부채의 장부금액은 다음과 같습니다.

(단위 : 백만원)

구분	당분기말	전기말
	USD	USD
외화자산	225,288.9	351,911.7
외화부채	118,597.6	153,316.7

당분기말과 전기말 현재 외화에 대한 원화 환율변동이 손익(법인세반영전)에 미치는 영향은 다음과 같습니다.

(단위 : 백만원)

구분	당분기말	전기말
	(5% 변동시)	(5% 변동시)
USD	±252.8	±210.6

## (2) 이자율위험

연결실체는 고정이자율 금융상품을 당기손익인식금융상품으로 처리하고 있지 않습니다. 따라서 연결실체의 수익 및 영업 현금흐름은 시장이자율의 변동으로부터 실질적으로 독립적입니다.

## 라. 자본위험관리

연결실체의 자본관리는 계속기업으로서의 존속능력을 유지하는 한편, 자본조달비용을 최소화하여 주주이익을 극대화하며 적절한 자본구조를 유지하는 것을 목표로 하고 있습니다. 연결실체는 부채비율을 기초로 자본을 관리하고 있으며 부채비율은 재무상태표상 총부채를 자본으로 나누어 산출됩니다. 당분기말 현재 연결실체는 32.4%의 적절한 부채비율을 유지하고 있습니다.

## 마. 파생상품 거래 현황

당사는 환율 변동에 따른 외화 자산의 공정가치 변동 위험을 회피하기 위하여 일부 외화 매출채권에 대하여 통화선도(Currency Forward) 계약을 체결하여 헷지하고 있습니다.

2025년 3분기말 현재 당사는 미달러화(USD) 매출채권에 대하여 위험 회피 목적으로 통화선도 계약을 체결하고 있으며, 관련 자산·부채 장부금액 및 평가손익은 다음과 같습니다.

### ① 위험회피수단의 주요 내역

(단위 : 원)

구분	계약처	계약금액 (단위: 백만)	계약환율	위험회피		계정과목	장부금액	
				시작일	만기일		자산	부채
통화선도	신한은행 외 1	USD 80	1,341.81~1,404.00	2025.5.13 ~ 2025.9.26	2025.10.13 ~ 2026.1.7	기타금융자산/부채	17,021,085	1,709,627,852
합계							17,021,085	1,709,627,852

### ② 위험회피항목의 주요 내역

(단위 : 원)

구분	계정	장부금액	가치변동
통화선도	매출채권	111,747,277,729	1,692,606,767

### ③ 위험회피회계 적용 결과

(단위 : 원)

구분	파생상품 가치변동	당기손익 인식 계정과목	위험회피의 비효과적인 부분으로 당기손익으로 인식한 금액
통화선도	(1,692,606,767)	파생상품평가이익/손실	0

주) 해당 위험회피회계 적용 파생상품에서 발생한 손익은 위험회피대상 자산에서 발생한 손익과 위험회피회계 적용 범위 내에서 상쇄됩니다.

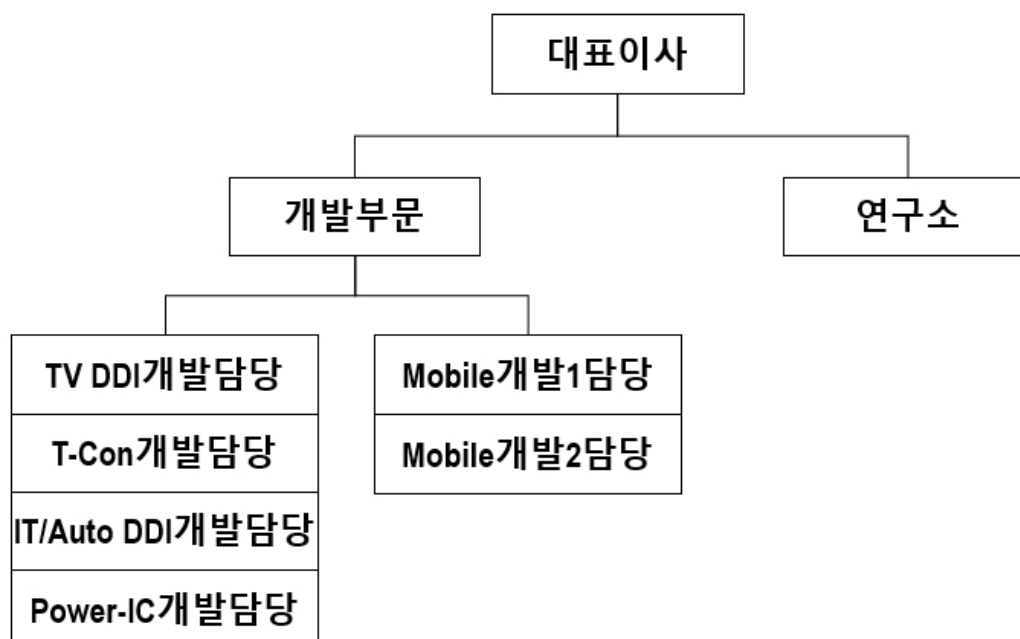
## 6. Major contracts and research and development activities

### 가. 경영상의 주요계약 등

보고서 작성기준일 현재 해당사항이 없습니다.

### 나. 연구개발활동

#### (1) 연구개발 담당 조직



#### 2) 연구개발 비용

(단위 : 백만원)

과목	제27기 3분기	제26기	제25기
----	----------	------	------

연구개발비용 총계		168,028	231,692	219,775
(정부보조금)		(67)	0	0
정부보조금 차감 후 연구개발비용 계		167,961	231,692	219,775
회계처리	판매비와 관리비	167,961	231,692	219,775
	제조원가	-	-	-
	개발비(무형자산)	-	-	-
연구개발비 / 매출액 비율(%) [연구개발비용계÷당기매출액×100]		13.5	12.4	11.6

주) 매출액비율은 정부보조금을 차감하기 전의 연구개발비용 지출 총액을 기준으로 산정하였습니다.

### (3) 연구개발 실적

당사는 디스플레이용 부품 전문 회사로 노트북, 모니터, 태블릿 PC와 같은 IT용 부품부터 TV, 모바일 기기용 부품에 이르기까지 디스플레이 전 영역에 걸쳐 다양한 제품 기술력을 확보하고 있습니다.

당사의 주력제품은 Driver-IC(D-IC), Timing Controller(T-CON), Power Management Integrated Circuit(PMIC)이며 Mobile향 P-OLED Display Driver IC(DDI), Touch Controller 등으로 제품 라인업 확대를 통해 매출성장을 해나가고 있습니다. 이와 더불어 디스플레이 이외의 다양한 애플리케이션 영역으로 기술력 확장을 통해 가전 및 전장용 시스템반도체를 개발하고 있습니다.

## 7. Other details

### 가. 지적재산권 보유 현황

연결실체는 영위하는 사업과 관련하여 2025년 9월 30일 기준 누적으로 국내특허 1,404건, 해외특허 2,471건을 보유하고 있으며 이 중 주요 특허권의 상세 내용은 다음과 같습니다.

종류	취득일	내용	근거법령	취득소요 인력 / 기간	상용화 여부
특허권	2022.05.02	디스플레이, 터치 동시 구동에 대한 특허로 35년 6월 4일까지 배타적 사용권 보유	특허법	5명 / 6년 9개월	상용화 단계
	2021.09.21	이미지 인코딩 및 디코딩 알고리즘에 대한 특허로 37년 6월까지 배타적 사용권 보유	특허법	2명 / 4년 3개월	상용화 예정
	2014.09.01	디스플레이 인트라 인터페이스 신호 복원에 대한 특허로 31년 11월까지 배타적 사용권 보유	특허법	2명 / 2년 9개월	상용화 단계
	2014.02.21	유기발광다이오드 디스플레이 구동에 대한 특허로 31년 12월까지 배타적 사용권 보유	특허법	4명 / 2년 1개월	상용화 단계
	2013.11.13	인셀 터치 디스플레이에 대한 특허로 32년 12월까지 배타적 사용권 보유	특허법	2명 / 11개월	상용화 단계
	2011.05.23	디스플레이 구동부 모니터링에 대한 특허로 29년 3월까지 배타적 사용권 보유	특허법	2명 / 2년 2개월	상용화 단계

	2010.10.01	디스플레이 인트라 인터페이스 신호 전송에 대한 특허로 28년 10월까지 배타적 사용권 보유	특허법	2명 / 2년	상용화 단계
--	------------	--	-----	---------	--------

연결실체는 상기의 중요 특허권 외에도 다수의 특허권을 취득하여 보유중이며, 이들은 대부분 TV, 모바일, IT 디스플레이 등에 관한 특허로 회사의 주력 사업 제품이 쓰이거나 향후 핵심 기능으로 활용될 가능성이 높습니다. 이 외에 Auto/가전용 MCU 등 관련 특허들은 디스플레이 외 신사업 진출 시 사업에 대한 보호 역할을 할 수 있습니다. 비디오 코덱 특허 개발 중으로, 향후 표준특허 평가를 통해 수익화가 가능합니다.

## 나. 시스템반도체(System IC) 부문

### (1) 산업의 특성

시스템반도체는 연산/제어 등 정보처리 기능을 하는 반도체로 가전, 모바일, 통신, 자동차 등 용도별로 특화된 시장을 형성하고 있어 다품종 맞춤형 시장으로 수천여 종의 다양한 제품으로 구성되어 있기 때문에 대부분 설계와 생산이 분업화되어 있습니다. 또한, 칩 구조가 복잡하여 우수 설계인력과 기술력이 요구되는 특성이 있습니다.

당사의 주요 제품인 Display Driver IC(DDI)는 디스플레이 패널에 투입되는 핵심 부품으로 당사는 디스플레이 산업의 업황에 영향을 받습니다.

현재 디스플레이 산업은 LCD 패널에서 OLED 패널로 트렌드가 전환되고 있습니다. OLED에는 LCD보다 높은 수준의 기술이 요구되며, 더 많은 부품의 투입이 필요하기 때문에 디스플레이 패널 전환이 이행되면 DDI 시장은 더욱 성장할 것으로 예상됩니다.

당사는 IT 분야의 디스플레이에 적용되는 제품을 시작으로 현재 TV, IT, Mobile 관련 다양한 제품 포트폴리오 확보를 통해 사업 확대 추진중입니다.

### (2) 시장의 규모 및 성장성

당사의 주요 제품인 DDI 시장의 경우, 중장기 패널 Form Factor 변화 등에 의한 신규 수요의 창출을 통해 점진적인 성장이 예상됩니다.

#### [DDI 시장 규모]

(단위: 십억달러)	2022	2023	2024	2025(E)	2026(E)	2027(E)	2028(E)
DDI	10.3	8.8	8.7	8.8	8.8	9.0	9.1

출처: 자사 추정

당사의 전방 산업인 디스플레이 산업의 경우, 중대형(TV/ IT/ 자동차) 패널은 고해상도(8K) LCD 및 OLED 등의 프리미엄 제품의 비중 확대로 질적인 성장과 함께 중국 패널업체들의 공격적인 투자로 규모의 성장을 이루고 있습니다. 또한, 소형(스마트폰/ 스마트워치) 패널은 애플의 첫 P-OLED 폰 출시('17년)를 기점으로 중국 패널업체들의 P-OLED 시장 진입이 가속화되고 있어, 향후 P-OLED 제품 중심의 성장이 지속될 것으로 보입니다. 이처럼 중국 패널

업체들의 급격한 성장과 패널의 세대 전환 추세 등에 의해 디스플레이 산업은 지속 성장할 것으로 예상됩니다.

**[연간 패널 판매 수량]**

(Unit : M units)	2022	2023	2024	2025(E)	2026(E)	2027(E)	2028(E)
TV	261.9	241.2	242.5	234.4	236.5	238.9	240.0
Monitor	159.3	149.1	153.2	149.5	153.6	157.2	159.1
Notebook	217.2	189.1	195.7	197.7	198.3	204.4	208.6
Tablet	256.4	244.4	255.8	263.4	265.5	268.0	269.1
Auto	192.9	205.1	210.3	217.8	223.5	229.1	234.6
Large Panel Total	1,087.6	1,028.7	1,057.5	1,062.8	1,077.3	1,097.6	1,111.4
Smartphone	1,382.9	1,266.9	1,304.4	1,323.3	1,339.7	1,362.0	1,377.3
Smartwatch	214.1	223.1	220.0	229.8	237.6	244.0	248.8
VR / AR	12.8	10.7	9.8	9.8	12.5	15.7	21.9
Small Panel Total	1,609.8	1,500.8	1,534.2	1,562.9	1,589.8	1,621.6	1,648.1

출처: 자사 추정

**① 중대형(TV/ IT/ 자동차) Display IC**

LCD TV용 Display IC 시장은 UHD 패널 비중 확대에 따른 패널당 소요 IC 개수 증가로 성장 중에 있습니다. 2025년 UHD TV 보급률은 글로벌 평균 약 70% 수준으로 예상됩니다.

또한 OLED TV용 Display IC 시장은 현재 OLED TV 패널을 양산 중인 업체가 LG디스플레이와 삼성디스플레이 밖에 없기 때문에 시장 규모는 작으나, 프리미엄 제품 시장을 지속 선도할 것으로 예상됩니다. OLED TV용 Display IC는 LCD 제품과는 달리 구동 기술 외에 패널 보상 기술이 핵심이기 때문에 이에 대한 경쟁력을 보유한 업체들이 시장을 선도할 것으로 보입니다.

IT 제품은 일부 프리미엄 브랜드를 중심으로 해상도를 높이고 터치패널을 활용하는 등 새로운 기능을 더하는 방식으로 부가가치를 높이고 있습니다. 또한, 패널사들의 8.6세대 OLED 팜 투자와 함께 OLED로의 시장 전환을 준비하고 있습니다. 2024년 애플의 첫 OLED 태블릿 제품 출시를 시작으로, IT용 OLED 시장은 지속 확대될 것으로 예상됩니다.

**② 소형(스마트폰/ 스마트워치) Display IC**

스마트폰 시장은 성숙화 단계에 접어들었습니다. 스마트폰 패널 시장규모는 2022년은 약 14억 대 수준이었으나, 2023년 13억대 수준으로 감소하며 2028년까지 약 13억 대 수준의 시장규모가 유지될 것으로 예상됩니다. 선진국 스마트폰 시장의 경우 이머징 시장 대비 성장이 낮을 것으로 예상되며, 이머징 시장의 성장이 전체 스마트폰 시장의 성장을 이끌고 있습니다.

주요 글로벌 세트 업체들은 신규 수요 창출을 위해 적극적인 Form Factor 진화 전략을 추진하고 있어 P-OLED 패널을 탑재한 스마트폰 비중이 지속 증가하고 있습니다. 현재 국내 패널 업체와 중국 패널업체 간 기술격차로 P-OLED 시장은 국내 패널업체가 선도하고 있지만, 중국 패널업체들의 Capacity 확장에 따라 P-OLED 패널 시장 내 중국 업체의 점유율은 점진적으로 증가할 것으로 예상됩니다.

스마트워치 시장은 2020년 큰 폭의 성장을 기록한 후, 지속적인 성장을 이어갈 것으로 전망되며 향후 IoT 등 여러 기기와 연계된 서비스를 통해 관련 시장의 규모는 지속적으로 증가할 것으로 보입니다.

### (3) 경기변동의 특성 및 경쟁요소

Display 부품 시장의 핵심 경쟁요소는 원천기술을 바탕으로 기술경쟁력을 강화함은 물론 Display의 발전과 더불어 초기 단계에서의 시장 진입입니다. 신기술이 적용된 새로운 시장에서 의미 있는 점유율을 확보함으로써 기술경쟁력을 통한 차별화를 통해 진입 장벽을 만드는 것입니다.

Display 산업은 기술 및 자본 집약적 특성과 규모의 경제가 동시에 필요한 분야로 기술적 완성도가 높아질수록 진입 장벽도 함께 높아지는 특성이 있습니다. 과거 패널 생산 업체들 사이 치열한 경쟁을 통해 공급능력이 향상하였고 수요의 증가와 맞물려 Display 산업 전반에 걸쳐 높은 성장률을 기록했습니다. 그러나 최근에는 시장의 높은 성숙도와 제한적 수요로 인해 저성장 국면으로 접어들었으며 경기변동에 민감도가 높아 교체 수요가 크게 늘지 않는 모습입니다.

당사는 LCD에서 OLED로 변화하는 시장 트렌드에 따라, 관련 기술 개발을 통해 Display 산업 전환에 경쟁사보다 선제적으로 대응하고자 노력하고 있습니다.

### (4) 시장점유율

시장 조사기관인 Omdia의 자료(Display Driver IC Market, 2025.07)에 따르면, 당사는 글로벌 Display Driver IC 업체 기준 Top 3를 차지하고 있습니다. 최근 매출 규모 자체보다는 새로운 기술에 대한 경쟁력 확보가 회사의 경쟁우위를 판가름하는 중요한 기준으로 자리 잡고 있는 만큼, 당사는 패널 및 세트 고객사와 긴밀한 협력을 통해 OLED/P-OLED 등 프리미엄 시장에 성공적으로 진입하고 있으며 Display 외에도 가전, 자동차 등 새로운 영역으로 사업 확장을 지속적으로 꾀하고 있습니다.

### (5) 회사의 강점

당사는 Display 시스템 반도체 핵심 부품을 Total Solution으로 제공함은 물론 수입의존도가 높았던 제품들을 국산화하여 국내 전방업체들의 안정적인 부품 조달과 가격경쟁력 강화에 기여하고 있습니다. 또한 끊임없는 기술 개발을 통해 고객사 맞춤형 프리미엄 제품을 제공함으로써 고객사의 시장 선도를 적극 지원하고 있습니다. 전방업체와의 신뢰를 기반으로 한 상생전략은 당사의 큰 경쟁력으로 작용하고 있습니다.

이를 통해 신제품 개발부터 공급에 이르기까지 타 업체보다 시장 변화에 신속하고 유연하게 대처할 수 있는 기술 대응력을 확보해 왔습니다. 이에 당사는 독자적인 설계 기술력을 바탕으로 국내외 고객사 확보를 통해 고객 다변화를 이루어 나가고 있습니다.

## 다. 신규사업 관련 내용과 전망

당사는 자동차 인포테인먼트 디스플레이용 반도체, 모터 구동용 반도체 등 다양한 자동차 분야 제품을 육성하고 있으며, 전기차 등에 쓰이는 고강도 및 높은 방열 성능을 지원하는 방열 기판을 개발하고 있습니다.

방열기판은 전력반도체의 동작 수명 및 안정성에 큰 영향을 주는 핵심 소재로, 전력소자의 열을 외부로 확산시키기 위해 높은 열전도성을 갖는 기판을 통칭하며 절연성 세라믹(알루미나, 질화규소, 질화알루미늄) 기판에 Cu(구리)를 접합한 형태를 가지고 있습니다. 방열기판 시장은 친환경 전기차, 신재생에너지 시장과 함께 높은 성장이 예상되는 분야로 '24년 ~'30년 CAGR 11% 성장이 예상됩니다.

MCU는 국내 가전용을 중심으로 수요를 확보하여 외판시장 확대 진입을 목표로 사업기반을 구축하고 있으며, 자동차 시장에서 전기차 및 자율주행차의 성장으로 차량용 반도체 시장수요는 지속적으로 증가할 것으로 예상됩니다. 이에 당사는 자동차 분야의 제품을 육성 중이며, 신규 사업에 대한 투자 및 차별화된 기술 확보를 통해 지속 가능한 성장을 위한 사업 동력을 구축하고 있습니다.

### III. Financial Matters

#### 1. Summary of financial information

##### 가. 요약연결재무정보

당사의 제27기 3분기 연결재무제표는 한국채택국제회계기준으로 작성되었으며 외부감사인의 감사를 받았습니다. 비교표시된 제26기, 제25기 연결재무제표는 한국채택국제회계기준으로 작성되었습니다.

(단위 : 백만원)

구 분	제27기 3분기	제26기	제25기
	2025년 9월 30일	2024년 12월 31일	2023년 12월 31일
[유동자산]	1,117,024	1,124,302	902,886
· 당좌자산	865,478	912,862	566,995
· 재고자산	251,546	211,440	335,891
[비유동자산]	343,962	375,500	302,179
· 유형자산	147,860	148,750	125,940
· 무형자산	82,825	84,392	73,937
· 기타비유동자산	113,277	142,358	102,302
자산총계	1,460,986	1,499,802	1,205,065
[유동부채]	307,458	351,838	207,337
[비유동부채]	49,695	68,377	20,964
부채총계	357,153	420,215	228,301
[자본금]	8,132	8,132	8,132
[자본잉여금]	76,343	76,343	76,343
[기타자본항목]	(338)	152	(1,073)
[이익잉여금]	1,019,696	994,960	893,362
[비지배지분]	-	-	-
자본총계	1,103,833	1,079,587	976,764
	(2025년 1월 1일~ 2025년 9월 30일)	(2024년 1월 1일~ 2024년 12월 31일)	(2023년 1월 1일~ 2023년 12월 31일)
매출액	1,249,239	1,865,622	1,901,445
영업이익	83,951	167,077	129,036
당기순이익	63,766	130,509	101,204
· 지배기업소유주지분	63,766	130,509	101,204
· 비지배지분	-	-	-
기본주당순이익(원)	3,921	8,024	6,222
희석주당순이익(원)	3,921	8,024	6,222

연결에 포함된 회사수	4개	4개	3개
-------------	----	----	----

## 나. 요약재무정보

당사의 제27기 3분기 재무제표는 한국채택국제회계기준으로 작성되었으며 외부감사인의 감사를 받았습니다. 비교표시된 제26기, 제25기 재무제표는 한국채택국제회계기준으로 작성되었습니다.

(단위 : 백만원)

구 분	제27기 3분기	제26기	제25기
	2025년 9월 30일	2024년 12월 31일	2023년 12월 31일
[유동자산]	1,107,461	1,115,610	897,568
· 당좌자산	855,915	904,170	561,677
· 재고자산	251,546	211,440	335,891
[비유동자산]	339,002	369,576	298,121
· 유형자산	142,162	143,762	122,829
· 무형자산	82,122	83,524	73,795
· 기타비유동자산	114,718	142,290	101,497
자산총계	1,446,463	1,485,186	1,195,688
[유동부채]	305,913	350,524	208,177
[비유동부채]	48,201	66,787	19,894
부채총계	354,114	417,311	228,071
[자본금]	8,132	8,132	8,132
[자본잉여금]	76,343	76,343	76,343
[기타자본항목]	(381)	(381)	(381)
[이익잉여금]	1,008,255	983,781	883,523
자본총계	1,092,349	1,067,875	967,617
종속·관계·공동기업 투 자주식의 평가방법	원가법	원가법	원가법
	(2025년 1월 1일~ 2025년 9월 30일)	(2024년 1월 1일 ~ 2024년 12월 31일)	(2023년 1월 1일 ~2023년 12월 31일)
매출액	1,249,239	1,865,622	1,901,445
영업이익	81,524	164,117	126,624
당기순이익	63,504	129,169	97,316
기본주당순이익(원)	3,905	7,942	5,983
희석주당순이익(원)	3,905	7,942	5,983

## 2. Consolidated financial statements

## 2-1. Consolidated Statement Of FinancialPosition

## Consolidated Statement Of FinancialPosition

FY 2025 09/30/2025 Current

FY 2024 12/31/2024 Current

(Unit : KRW)

	FY 2025	FY 2024
Assets		
Current assets	1,117,024,102,653	1,124,302,602,321
Cash and cash equivalents	116,027,840,860	238,812,527,045
Short-term deposits, not classified as cash equivalents	320,428,653,493	160,000,000,000
Trade current receivables	356,036,532,202	448,798,746,663
Other current receivables	4,701,121,556	5,316,108,562
Other current assets	68,266,825,225	59,935,403,474
Other current financial assets	17,021,085	0
Current inventories	251,546,108,232	211,439,816,577
Non-current assets	343,961,667,261	375,499,346,539
Other non current receivables	8,619,026,770	9,482,830,679
Investments accounted for using equity method	45,848,076,120	47,624,683,592
Property, plant and equipment	110,843,845,740	111,129,212,477
Right-of-use assets	37,015,553,199	37,621,013,253
Intangible assets and goodwill	82,825,258,702	84,391,556,772
Other non-current assets	28,038,824,354	52,660,261,648
Other non-current financial assets	6,000,000,000	0
Non current net defined benefit asset	0	5,795,123,835
Net deferred tax assets	24,771,082,376	26,794,664,283
Assets	1,460,985,769,914	1,499,801,948,860
Liabilities		
Current liabilities	307,458,302,315	351,838,480,250
Current trade payables	162,100,890,250	153,443,980,008
Other current payables	97,637,520,361	102,575,719,049
Other current liabilities	21,450,039,771	50,866,220,497
Other current financial liabilities	1,709,627,852	13,642,987,958
Current lease liabilities	9,188,184,238	9,882,329,798
Current tax liabilities	15,372,039,843	21,427,242,940
Non-current liabilities	49,694,686,333	68,376,942,104
Other non current payables	12,707,065,383	34,505,887,888
Other non-current liabilities	6,625,254,740	6,623,694,362

Non current lease liabilities	28,229,768,890	27,245,378,294
Non-current net defined benefit liability	2,130,707,154	0
Net deferred tax liabilities	1,890,166	1,981,560
Total liabilities	357,152,988,648	420,215,422,354
Equity		
Equity attributable to owners of parent	1,103,832,781,266	1,079,586,526,506
Issued capital	8,132,150,000	8,132,150,000
Capital surplus	76,343,170,500	76,343,170,500
Accumulated other comprehensive income	(337,730,521)	151,598,197
Retained earnings	1,019,695,191,287	994,959,607,809
Non-controlling interests	0	0
Total equity	1,103,832,781,266	1,079,586,526,506
Equity and liabilities	1,460,985,769,914	1,499,801,948,860

2-2. Consolidated Income Statement  
Consolidated Income Statement

FY 2025 3 Quarterly From 01/01/2025 To 09/30/2025

FY 2024 3 Quarterly From 01/01/2024 To 09/30/2024

(Unit : KRW)

	CFY 3Q		PFY 3Q	
	THREE MONTH	Cumulative	THREE MONTH	Cumulative
Revenue	394,391,131,472	1,249,238,954,809	419,850,482,315	1,363,055,491,368
Cost of sales	273,980,181,038	851,279,941,304	280,552,563,187	913,419,308,856
Gross profit	120,410,950,434	397,959,013,505	139,297,919,128	449,636,182,512
Selling general and administrative expense	106,380,021,154	314,008,491,881	105,020,036,808	313,064,445,092
Operating income(loss)	14,030,929,280	83,950,521,624	34,277,882,320	136,571,737,420
Finance income	1,717,808,690	21,086,462,984	7,256,604,565	16,382,426,844
Finance costs	3,440,780,849	11,171,216,876	2,326,325,197	15,633,639,221
Non-operating Income	1,276,770,111	19,845,926,272	2,888,366,789	17,398,736,804
Non-operating expense	(170,017,979)	30,304,538,899	8,101,722,512	15,978,310,370
Share of profit (loss) of associates and joint ventures accounted for using equity method	(23,056,117)	(1,338,921,318)	(1,912,401,485)	1,126,178,853
Profit (loss) before tax	13,731,689,094	82,068,233,787	32,082,404,480	139,867,130,330
Tax expense (income)	3,641,936,620	18,302,245,706	6,723,702,118	30,130,083,092
Profit (loss)	10,089,752,474	63,765,988,081	25,358,702,362	109,737,047,238
Profit (loss), attributable to				

Profit (loss), attributable to owners of parent	10,089,752,474	63,765,988,081	25,358,702,362	109,737,047,238
Profit (loss), attributable to non-controlling interests	0	0	0	0
Earnings per share				
Basic earnings (loss) per share (Unit : KRW)	620	3,921	1,559	6,747
Diluted earnings (loss) per share (Unit : KRW)	620	3,921	1,559	6,747

## 2-3. Consolidated Statement Of Comprehensive Income

Consolidated Statement Of Comprehensive Income

FY 2025 3 Quarterly From 01/01/2025 To 09/30/2025

FY 2024 3 Quarterly From 01/01/2024 To 09/30/2024

(Unit : KRW)

	CFY 3Q		PFY 3Q	
	THREE MONTH	Cumulative	THREE MONTH	Cumulative
Profit (loss)	10,089,752,474	63,765,988,081	25,358,702,362	109,737,047,238
Other comprehensive income	444,008,639	(485,413,321)	527,541,632	135,025,589
Other comprehensive income that will not be reclassified to profit or loss, net of tax	(8,111,206)	(455,458,711)	(87,537,157)	(378,095,665)
Other comprehensive income, net of tax, gains (losses) on remeasurements of defined benefit plans	(3,487,100)	3,915,397	(85,319,919)	(201,174,054)
Share of other comprehensive income of associates and joint ventures accounted for using equity method that will not be reclassified to profit or loss, net of tax	(4,624,106)	(459,374,108)	(2,217,238)	(176,921,611)
Other comprehensive income that will be reclassified to profit or loss, net of tax	452,119,845	(29,954,610)	615,078,789	513,121,254
Gains (losses) on exchange differences on translation of foreign operations, net of tax	400,584,675	(222,849,714)	(49,379,625)	336,660,576
Share of other comprehensive income of associates and joint ventures accounted for using equity method that will be reclassified to profit or loss, net of tax	51,535,170	192,895,104	664,458,414	176,460,678
Comprehensive income	10,533,761,113	63,280,574,760	25,886,243,994	109,872,072,827
Comprehensive income attributable to				
Comprehensive income, attributable to owners of parent	10,533,761,113	63,280,574,760	25,886,243,994	109,872,072,827
Comprehensive income, attributable to non-controlling interests	0	0	0	0

## 2-4. Consolidated Statement Of Changes In Equity

Consolidated Statement Of Changes In Equity

FY 2025 3 Quarterly From 01/01/2025 To 09/30/2025

FY 2024 3 Quarterly From 01/01/2024 To 09/30/2024

(Unit : KRW)

	Equity						
	Equity attributable to owners of parent					Non-controlling interests	Total of Equity
	Issued capital	Capital surplus	Accumulated other comprehensive income	Retained earnings	Total of Equity attributable to owners of parent		
2024.01.01 (Equity at beginning of period)	8,132,150,000	76,343,170,500	(1,072,918,655)	893,361,335,387	976,763,737,232	0	976,763,737,232
Profit (loss)	0	0	0	109,737,047,238	109,737,047,238	0	109,737,047,238
Other comprehensive income, net of tax, gains (losses) on remeasurements of defined benefit plans	0	0	0	(201,174,054)	(201,174,054)	0	(201,174,054)
Other comprehensive income, net of tax, exchange differences on translation of foreign operations	0	0	336,660,576	0	336,660,576	0	336,660,576
Share of other comprehensive income of associates and joint ventures accounted for using equity method, net of tax	0	0	(460,933)	0	(460,933)	0	(460,933)
Dividends recognised as distributions to owners	0	0	0	(29,275,740,000)	(29,275,740,000)	0	(29,275,740,000)
2024.09.30 (Equity at end of period)	8,132,150,000	76,343,170,500	(736,719,012)	973,621,468,571	1,057,360,070,059	0	1,057,360,070,059
2025.01.01 (Equity at beginning of period)	8,132,150,000	76,343,170,500	151,598,197	994,959,607,809	1,079,586,526,506	0	1,079,586,526,506
Profit (loss)	0	0	0	63,765,988,081	63,765,988,081	0	63,765,988,081
Other comprehensive income, net of tax, gains (losses) on remeasurements of defined benefit plans	0	0	0	3,915,397	3,915,397	0	3,915,397
Other comprehensive income, net of tax, exchange differences on translation of foreign operations	0	0	(222,849,714)	0	(222,849,714)	0	(222,849,714)

Share of other comprehensive income of associates and joint ventures accounted for using equity method, net of tax	0	0	(266,479,004)	0	(266,479,004)	0	(266,479,004)
Dividends recognised as distributions to owners	0	0	0	(39,034,320,000)	(39,034,320,000)	0	(39,034,320,000)
2025.09.30 (Equity at end of period)	8,132,150,000	76,343,170,500	(337,730,521)	1,019,695,191,287	1,103,832,781,266	0	1,103,832,781,266

2-5. Consolidated Statement Of CashFlows  
Consolidated Statement Of CashFlows  
FY 2025 3 Quarterly From 01/01/2025 To 09/30/2025  
FY 2024 3 Quarterly From 01/01/2024 To 09/30/2024

(Unit : KRW)

	FY 2025	FY 2024
Cash flows from (used in) operating activities	110,686,976,930	198,618,967,303
Cash flows from (used in) operations	124,224,285,081	221,611,907,897
Profit (loss)	63,765,988,081	109,737,047,238
Adjustments to reconcile profit (loss)	48,262,566,268	54,299,009,569
Adjustments for assets and liabilities of operating activities	12,195,730,732	57,575,851,090
Interest received, classified as operating activities	10,034,758,798	13,541,805,458
Interest paid, classified as operating activities	(1,035,312,523)	(655,574,310)
Dividends received, classified as operating activities	90,900,000	303,000,000
Income taxes paid (refund), classified as operating activities	(22,627,654,426)	(36,182,171,742)
Cash flows from (used in) investing activities	(187,235,624,936)	(91,984,751,514)
Purchase of short term Financial Instruments	(310,431,890,864)	(580,000,000,000)
Proceeds from sales of short term Financial Instruments	150,000,000,000	520,345,840,893
Purchase of other receivables	(35,810,309)	(1,725,591,452)
Proceeds from sales of other receivables	1,095,938,955	4,120,960,980
Purchase of property, plant and equipment	(14,397,601,861)	(18,230,428,837)
Proceeds from sales of property, plant and equipment	493,500,000	16,136,000
Purchase of intangible assets	(7,959,760,857)	(16,511,669,098)
Purchase of other financial assets	(6,000,000,000)	0
Cash flows from (used in) financing activities	(46,203,392,357)	(35,708,775,260)

Dividends paid, classified as financing activities	(39,034,211,466)	(29,275,659,685)
Payments of lease liabilities, classified as financing activities	(7,169,180,891)	(6,433,115,575)
Increase (decrease) in cash and cash equivalents before effect of exchange rate changes	(122,752,040,363)	70,925,440,529
Cash and cash equivalents at beginning of period	238,812,527,045	184,417,149,183
Effect of exchange rate changes on cash and cash equivalents	(32,645,822)	(160,781,359)
Cash and cash equivalents at end of period	116,027,840,860	255,181,808,353

### 3. Notes to the consolidated financial statements

#### 1. Corporate information and statement of IFRS compliance (Consolidated)

주식회사 LX세미콘(이하 "지배기업")과 종속기업(이하 지배기업과 종속기업을 일괄하여 "연결실체")의 일반적인 사항은 다음과 같습니다.

##### 1.1 회사의 개요

##### (1) 지배기업의 개요

지배기업은 FPD(Flat Panel Display) 반도체 IC 설계 및 제조를 목적으로 1999년 11월 11일에 설립되었으며 대전광역시 유성구 테크노2로 222에 소재하고 있습니다. 지배기업은 2001년 10월 19일에 한국산업기술진흥회로부터 기술개발촉진법 제16조 및 동법 시행령 제15조 제1항에 의해 기업부설연구소 인증서를 받았으며 2011년 10월 23일에 대덕연구개발특구 등의 육성에 관한 특별법 제9조 제1항의 규정에 의해 첨단기술기업으로 지정되었습니다.

지배기업은 2010년 6월 8일에 주식을 코스닥시장에 상장한 이후, 2021년 7월 1일 회사명을 주식회사 실리콘웍스에서 주식회사 LX세미콘으로 변경하였으며, 2022년 11월 3일자로 코스닥시장에서 상장 폐지하고 유가증권시장으로 이전상장하였습니다. 당분기말 현재 지배기업의 자본금은 8,132,150천원(발행주식 수 16,264,300주, 수권주식수 50,000,000주)입니다.

당분기말 현재 지배기업의 주주현황은 다음과 같습니다.

(단위: 주)			
주 주 명	소유 주식수	지 분 율	비 고
(주)LX홀딩스	5,380,524	33.08%	최대주주
기타	10,883,776	66.92%	-
합 계	16,264,300	100.00%	

##### (2) 당분기말과 전기말 현재 연결대상 종속기업 개요

회사명	소재지	주요 영업활동	결산월	당분기말 지배지분율	전기말 지배지분율
LX Semicon U.S.A., Inc	미국	반도체제조설계	12월	100%	100%
LX Semicon China Co., Ltd.	중국	반도체제조설계	12월	100%	100%
LX Semicon Japan Co., Ltd.	일본	반도체제조설계	12월	100%	100%
LX Semicon Taiwan Co., Ltd.	대만	반도체제조설계	12월	100%	100%

당분기 중 신규로 연결에 포함되거나 연결에서 제외된 기업은 없습니다.

##### (3) 종속기업의 요약 재무정보

연결대상 종속기업의 당분기말 및 전기말 현재 요약 재무상태표와 각 회계기간의 요약포괄손익계산서는 다음과 같습니다.

(단위: 원)						
회사명	당분기말			당분기		
	자산	부채	자본	매출	당기순손익	총포괄손익
LX Semicon U.S.A., Inc	1,822,797,785	238,633,702	1,584,164,083	3,818,616,585	125,924,825	54,425,637
LX Semicon China Co., Ltd.	12,020,565,077	2,803,833,300	9,216,731,777	13,385,532,774	870,814,811	688,038,780
LX Semicon Japan Co., Ltd.	4,827,222,570	2,604,232,588	2,222,989,982	7,706,883,406	427,388,962	436,503,386
LX Semicon Taiwan Co., Ltd	1,428,174,694	548,404,372	879,770,322	1,256,743,154	55,307,994	77,619,075

(단위: 원)						
회사명	전기말			전분기		
	자산	부채	자본	매출	당기순손익	총포괄손익
LX Semicon U.S.A., Inc	1,945,377,037	415,638,591	1,529,738,446	3,176,451,201	62,580,283	89,781,880
LX Semicon China Co., Ltd.	11,732,122,776	3,203,429,779	8,528,692,997	12,192,177,210	760,546,452	1,051,680,179
LX Semicon Japan Co., Ltd.	4,414,172,450	2,627,685,854	1,786,486,596	6,263,480,340	236,676,391	262,011,535
LX Semicon Taiwan Co., Ltd	1,581,446,618	779,295,371	802,151,247	520,437,577	20,598,664	13,588,772

## 2. Accounting policies, changes in accounting estimates and errors (Consolidated)

### (1) 분기연결재무제표 작성기준

연결실체의 연결재무제표는 연차재무제표가 속하는 기간의 일부에 대하여 기업회계기준서 제 1034호 '중간재무보고'를 적용하여 작성하는 요약중간재무제표입니다. 동 요약중간재무제표에 대한 이해를 위해서는 한국채택국제회계기준에 따라 작성된 2024년 12월 31일자로 종료하는 회계연도에 대한 연차연결재무제표를 함께 이용하여야 합니다.

중간재무제표의 작성에 적용된 중요한 회계정책은 아래에서 설명하는 기준서나 해석서의 도입과 관련된 영향 및 아래 3)에 기재된 내용을 제외하고는 2024년 12월 31일로 종료하는 회계연도에 대한 연차연결재무제표 작성시 채택한 회계정책과 동일합니다.

1) 당분기부터 새로 도입된 기준서 및 해석서와 그로 인한 회계정책 변경의 내용은 다음과 같습니다.

- 기업회계기준서 제1021호 '환율변동효과'와 기업회계기준서 제1101호 '한국채택국제회계기준의 최초채택' 개정 - 교환가능성 결여

통화의 교환가능성을 평가하고 다른 통화와 교환이 가능하지 않다면 현물환율을 추정하며 관련 정보를 공시하도록 하고 있습니다. 해당 기준서의 개정이 연결재무제표에 미치는 중요한 영향은 없습니다.

2) 제정·공표되었으나 아직 시행일이 도래하지 않아 적용하지 아니한 한국채택국제회계기준은 다음과 같습니다.

- 기업회계기준서 제1109호 '금융상품', 제1107호 '금융상품: 공시' 개정

실무에서 제기된 의문에 대응하고 새로운 요구사항을 포함하기 위해 기업회계기준서제1109호 '금융상품'과 제1107호 '금융상품: 공시'가 개정되었습니다. 동 개정사항은 2026년 1월 1일 이후 시작하는 회계연도부터 적용되며, 조기적용이 허용됩니다. 주요 개정내용은 다음과 같습니다. 연결실체는 동 개정으로 인한 연결재무제표의 영향을 검토 중에 있습니다.

- 특정 기준을 충족하는 경우, 결제일 전에 전자지급시스템을 통해 금융부채가 결제된 것으로(제거된 것으로) 간주할 수 있도록 허용
- 금융자산이 원리금 지급만으로 구성되어 있는지의 기준을 충족하는지 평가하기 위한 추가 지침을 명확히 하고 추가함.
- 계약상 현금흐름의 시기나 금액을 변경시키는 계약조건이 기업에 미치는 영향과 기업이 노출되는 정도를 금융상품의 각 종류별로 공시
- FVOCI 지정 지분상품에 대한 추가 공시

- 한국채택국제회계기준 연차개선 Volume 11

한국채택국제회계기준 연차개선 Volume 11은 2026년 1월 1일 이후 시작하는 회계연도부터 적용되며, 조기적용이 허용됩니다. 연결실체는 동 개정으로 인한 연결재무제표의 영향을 검토 중에 있습니다.

- 기업회계기준서 제1101호 '한국채택국제회계기준의 최초채택': K-IFRS 최초 채택시 위험회피회계 적용
- 기업회계기준서 제1107호 '금융상품:공시': 제거 손익, 실무적용지침
- 기업회계기준서 제1109호 '금융상품': 리스부채의 제거 회계처리와 거래가격의 정의
- 기업회계기준서 제1110호 '연결재무제표': 사실상의 대리인 결정
- 기업회계기준서 제1007호 '현금흐름표': 원가법

3) 법인세비용 : 중간기간의 법인세비용은 전체 회계연도에 대해서 예상되는 최선의 가중평균연간법인세율, 즉 추정평균연간유효법인세율을 중간기간의 세전이익에 적용하여 계산합니다.

연결실체의 직전연도 전체 회계기간을 기준으로 한 연결매출액은 필라2 법인세의 매출액요건을 충족하고 있으나, 연결실체는 필라2 적용제외 조건에 해당됩니다. 따라서 필라2가 연결실체의 법인세에 미치는 영향은 없으며, 이와 관련하여 당분기에 인식한 당기법인세는 없습니다.

3. Significant judgements and sources of estimation uncertainty (Consolidated)

중간재무제표를 작성함에 있어 경영진은 연결재무제표에 인식되는 금액에 유의적인 영향을 미치는 판단을 하여야 하며(추정과 관련된 사항은 제외), 다른 자료로부터 쉽게 식별할 수 없는 자산과 부채의 장부금액에 대한 추정 및 가정을 하여야 합니다. 추정치와 관련 가정은 과거 경험 및 관련이 있다고 여겨지는 기타 요인에 근거합니다. 또한 실제 결과는 이러한 추정치들과 다를 수도 있습니다.

중간재무제표 작성을 위해 연결실체의 회계정책의 적용과정에서 내린 중요한 판단과 추정불확실성의 주요원천에 대한 내용은 법인세비용을 결정하는데 사용된 추정의 방법을 제외하고는 2024년 12월 31일로 종료하는 회계연도에 대한 연차연결재무제표와 동일합니다.

4.Operating segments (Consolidated)

Disclosure of major customers

Current Fiscal Year (Quarter)

(Unit : KRW)

	Major Customer A	Major Customer B

Description of factors used to identify entity's reportable segments	연결실체는 영업수익을 창출하는 재화나 용역의 성격 및 서비스를 제공하기 위한 자산의 특성 등을 기준으로 최고경영자의 의사결정을 위해 제공되는 수준으로 보고부문을 구분하며, 그 결과 연결실체를 단일의 보고부문으로 식별하였습니다.	연결실체는 영업수익을 창출하는 재화나 용역의 성격 및 서비스를 제공하기 위한 자산의 특성 등을 기준으로 최고경영자의 의사결정을 위해 제공되는 수준으로 보고부문을 구분하며, 그 결과 연결실체를 단일의 보고부문으로 식별하였습니다.
Information about major customers	연결실체의 매출액 중 10% 이상을 차지하는 단일 외부고객	연결실체의 매출액 중 10% 이상을 차지하는 단일 외부고객
Revenue	690,206,325,715	344,133,011,983

Quarter (or Half-Year) of Last Fiscal Year

(Unit : KRW)

	Major Customer A	Major Customer B
Description of factors used to identify entity's reportable segments	연결실체는 영업수익을 창출하는 재화나 용역의 성격 및 서비스를 제공하기 위한 자산의 특성 등을 기준으로 최고경영자의 의사결정을 위해 제공되는 수준으로 보고부문을 구분하며, 그 결과 연결실체를 단일의 보고부문으로 식별하였습니다.	연결실체는 영업수익을 창출하는 재화나 용역의 성격 및 서비스를 제공하기 위한 자산의 특성 등을 기준으로 최고경영자의 의사결정을 위해 제공되는 수준으로 보고부문을 구분하며, 그 결과 연결실체를 단일의 보고부문으로 식별하였습니다.
Information about major customers	연결실체의 매출액 중 10% 이상을 차지하는 단일 외부고객	연결실체의 매출액 중 10% 이상을 차지하는 단일 외부고객
Revenue	773,224,257,714	398,932,350,781

### 5-1. Financial instruments - Financial instruments by category (Consolidated)

Disclosure Of Financial Assets By Category

Ending of Current Fiscal Year (Quarter)

(Unit : KRW)

	Financial assets, category																				Total of Financial assets, category								
	Financial assets at fair value through profit or loss, category						Financial assets at fair value through other comprehensive income, category						Financial assets at amortised cost, category						Derivative assets										
	Financial assets, class						Financial assets, class						Financial assets, class						Financial assets, class										
Equity investments	Cash equivalents	Short-term investments	Trade receivables	Other receivables	Derivative assets held-for-hedging	Total of Financial assets, class	Equity investments	Cash equivalents	Short-term investments	Trade receivables	Other receivables	Derivative assets held-for-hedging	Total of Financial assets, class	Equity investments	Cash equivalents	Short-term investments	Trade receivables	Other receivables	Derivative assets held-for-hedging	Total of Financial assets, class									
Financial assets	6,000,000.00					6,000,000.000				320,579.66			320,579.662.557				116,027.840.860	320,428.653.493	35,456.869.645	13,320.148.326		485,233.512.324					17,021.065.5	17,021.065.966	811,830.196.666



			financial liabilities held for hedging	liabilities outside scope of IFRS 7, class				financial liabilities held for hedging	outside scope of IFRS 7, class		payables	payables	liabilities held for hedging	outside scope of IFRS 7, class				
																	Lease liabilities	Lease liabilities
Financial liabilities	162,100,890,250	64,536,530,710			226,637,420,960			1,709,627,852		1,709,627,852					37,417,953,128	37,417,953,128	265,765,001,940	
Financial liabilities, at fair value								1,709,627,852		1,709,627,852								
Description of reasons for exclusion from fair value disclosure	공정부채에 포함되지 않은 총량면 권		장부금액이 공정가치의 합리적인 근사치 이므로 공정가치 서	의 합리적인 근사치 이므로 공정가치 서	장부금액이 공정가치의 합리적인 근사치 이므로 공정가치 서	의 합리적인 근사치 이므로 공정가치 서	의 합리적인 근사치 이므로 공정가치 서	의 합리적인 근사치 이므로 공정가치 서	의 합리적인 근사치 이므로 공정가치 서	의 합리적인 근사치 이므로 공정가치 서	의 합리적인 근사치 이므로 공정가치 서	의 합리적인 근사치 이므로 공정가치 서	의 합리적인 근사치 이므로 공정가치 서	의 합리적인 근사치 이므로 공정가치 서	의 합리적인 근사치 이므로 공정가치 서	의 합리적인 근사치 이므로 공정가치 서	의 합리적인 근사치 이므로 공정가치 서	의 합리적인 근사치 이므로 공정가치 서

Ending of Last Fiscal Year

(Unit : KRW)

Financial liabilities, category															Total of Financial liabilities, category		
Financial liabilities at amortised cost, category					Derivative financial liabilities					Other financial liabilities							
Financial liabilities, class					Total of Financial liabilities, class	Financial liabilities, class					Total of Financial liabilities, class	Financial liabilities, class					
Trade payables	Other payables	Derivative financial liabilities held for hedging	Financial liabilities outside scope of IFRS 7, class	Lease liabilities		Trade payables	Other payables	Derivative financial liabilities held for hedging	Financial liabilities outside scope of IFRS 7, class	Lease liabilities		Total of Financial liabilities, class	Trade payables	Other payables		Derivative financial liabilities held for hedging	Financial liabilities outside scope of IFRS 7, class
Financial liabilities	153,443,980,008	106,685,420,663			260,129,400,671			13,642,987,958		13,642,987,958					37,127,708,092	37,127,708,092	310,900,096,721
Financial liabilities, at fair value								13,642,987,958		13,642,987,958							
Description of reasons for exclusion from fair value disclosure	공정부채에 포함되지 않은 총량면 권		장부금액이 공정가치의 합리적인 근사치 이므로 공정가치 서	의 합리적인 근사치 이므로 공정가치 서	장부금액이 공정가치의 합리적인 근사치 이므로 공정가치 서	의 합리적인 근사치 이므로 공정가치 서	의 합리적인 근사치 이므로 공정가치 서	의 합리적인 근사치 이므로 공정가치 서	의 합리적인 근사치 이므로 공정가치 서	의 합리적인 근사치 이므로 공정가치 서	의 합리적인 근사치 이므로 공정가치 서	의 합리적인 근사치 이므로 공정가치 서	의 합리적인 근사치 이므로 공정가치 서	의 합리적인 근사치 이므로 공정가치 서	의 합리적인 근사치 이므로 공정가치 서	의 합리적인 근사치 이므로 공정가치 서	의 합리적인 근사치 이므로 공정가치 서

Gains Losses Financial Instruments By Category

Current Fiscal Year (Quarter)

(Unit : KRW)

Assets and liabilities						Total of Assets and liabilities
Financial assets, category			Financial liabilities, category			
Financial assets measured at fair value	Financial assets at amortised cost,	Financial liabilities at amortised cost,	Lease liabilities	Derivatives		

	through other comprehensive income, category	category	category			
Interest income (expense)	0	11,377,268,101	(1,463,367,304)	(1,035,312,523)	0	8,878,588,274
Other finance income (cost)	(18,995,835,228)	(890,172,366)	4,301,988,826	0	7,220,714,017	(8,363,304,751)
Description of other finance income (cost)						기타손익은 기타포괄손익-공정가치측정금융자산, 상각후원가측정금융자산과 상각후원가측정금융부채, 위험회피목적파생상품에서 발생하는 매출채권처분손실, 외화환산손익, 외환차손익 등으로 구성되어 있습니다.

Quarter (or Half-Year) of Last Fiscal Year

(Unit : KRW)

	Assets and liabilities					Total of Assets and liabilities
	Financial assets, category		Financial liabilities, category			
	Financial assets measured at fair value through other comprehensive income, category	Financial assets at amortised cost, category	Financial liabilities at amortised cost, category	Lease liabilities	Derivatives	
Interest income (expense)	0	13,552,126,955	(532,613,908)	(655,574,310)	0	12,363,938,737
Other finance income (cost)	(22,139,562,296)	8,681,087,373	1,139,679,257	0	2,387,669,973	(9,931,125,693)
Description of other finance income (cost)						기타손익은 기타포괄손익-공정가치측정금융자산, 상각후원가측정금융자산과 상각후원가측정금융부채, 위험회피목적파생상품에서 발생하는 매출채권처분손실, 외화환산손익, 외환차손익 등으로 구성되어 있습니다.

## 5-2. Financial instruments – Fair value measurement (Consolidated)

Disclosure Of Level Of FairValue Hierarchy Within Which FairValueMeasurement Is Categorised

	Level 1 of fair value hierarchy	Level 2 of fair value hierarchy	Level 3 of fair value hierarchy
Description of level of fair value hierarchy within which fair value measurement is categorised	측정일에 동일한 자산이나 부채에 대해 접근할 수 있는 활성시장의 (조정하지 않은) 공시가격으로, 해당 공시가격에는 금리 상승 및 인플레이션, ESG관련 위험 등의 경제환경 변화에 대한 시장의 가정이 반영되어 있음. (수준 1)	수준 1의 공시가격 외에 자산이나 부채에 대해 직접적으로나 간접적으로 관측할 수 있는 투입변수 (수준 2)	비상장 지분증권과 ESG관련 위험으로 인해 유의적인 관측불가능한 조정이 반영되는 금융상품과 같이, 자산이나 부채에 대한 관측할 수 없는 투입변수 (수준 3)

Disclosure of fair value measurement of assets

(Unit : KRW)

Aggregated measurement								
At fair value								
Financial assets, category								
Derivative assets				Financial assets at fair value through profit or loss, category				
	All levels of fair value hierarchy			Total of All levels of fair value hierarchy	All levels of fair value hierarchy			Total of All levels of fair value hierarchy
	Level 1 of fair value hierarchy	Level 2 of fair value hierarchy	Level 3 of fair value hierarchy		Level 1 of fair value hierarchy	Level 2 of fair value hierarchy	Level 3 of fair value hierarchy	
Financial assets	0	17,021,085	0	17,021,085	0	0	6,000,000,000	6,000,000,000
Statement that there were no transfers between Level 1, Level 2 or Level 3 of fair value hierarchy, assets				당분기 중 반복적인 공정가치 측정치의 서열체계 수준 간 대체는 없습니다.				당분기 중 반복적인 공정가치 측정치의 서열체계 수준 간 대체는 없습니다.
Description of valuation techniques used in fair value measurement, assets		현금흐름 할인모형					현금흐름 할인모형	
Description of inputs used in fair value measurement, assets		할인율 및 환율					할인율	

Disclosure of fair value measurement of liabilities

Ending of Current Fiscal Year (Quarter)

(Unit : KRW)

Aggregated measurement				
At fair value				
Financial liabilities, category				
Derivative financial liabilities				
	All levels of fair value hierarchy			Total of All levels of fair value hierarchy
	Level 1 of fair value hierarchy	Level 2 of fair value hierarchy	Level 3 of fair value hierarchy	
Financial liabilities	0	1,709,627,852	0	1,709,627,852

Statement that there were no transfers between Level 1, Level 2 or Level 3 of fair value hierarchy, liabilities				당분기 중 반복적인 공정가치 측정치의 계열체계 수준 간 대체는 없습니다.
Description of valuation techniques used in fair value measurement, liabilities		현금흐름 할인모형		
Description of inputs used in fair value measurement, liabilities		할인율 및 환율		

Ending of Last Fiscal Year

(Unit : KRW)

Aggregated measurement				
At fair value				
Financial liabilities, category				
Derivative financial liabilities				
All levels of fair value hierarchy				Total of All levels of fair value hierarchy
	Level 1 of fair value hierarchy	Level 2 of fair value hierarchy	Level 3 of fair value hierarchy	
Financial liabilities	0	13,642,987,958	0	13,642,987,958
Statement that there were no transfers between Level 1, Level 2 or Level 3 of fair value hierarchy, liabilities				
Description of valuation techniques used in fair value measurement, liabilities		현금흐름 할인모형		
Description of inputs used in fair value measurement, liabilities		할인율 및 환율		

### 5-3. Financial instruments - Derivatives (Consolidated)

Disclosure of detailed information about hedging instruments

## Ending of Current Fiscal Year (Quarter)

(Unit : KRW)

	Hedges		
	Fair value hedges		
	Risks		
	Currency risk		
	Derivatives type		
	Forward contract		
	Counterparties		
	Shinhan bank and another		
	Ranges		Total of Ranges
	Bottom of range	Top of range	
Nominal amount of hedging instrumentUSD			80
Contract exchange rate	1,341.81	1,404.00	
Description of line item in statement of financial position that includes hedging instrument			기타금융자산/부채
Risk hedging start date	2025-05-13	2025-09-26	
Risk hedging maturity date	2025-10-13	2026-01-07	
Hedging instrument, assets			17,021,085
Hedging instrument, liabilities			1,709,627,852

## Ending of Last Fiscal Year

(Unit : KRW)

	Hedges		
	Fair value hedges		
	Risks		
	Currency risk		
	Derivatives type		
	Forward contract		
	Counterparties		
	Shinhan bank and another		
	Ranges		Total of Ranges
	Bottom of range	Top of range	
Nominal amount of hedging instrumentUSD			138
Contract exchange rate	1,298.70	1,456.75	
Description of line item in statement of financial position that includes hedging instrument			기타금융자산/부채
Risk hedging start date	2024-09-11	2024-12-26	

Risk hedging maturity date	2025-01-06	2025-04-07	
Hedging instrument, assets			0
Hedging instrument, liabilities			13,642,987,958

Disclosure of detailed information about hedged items

Ending of Current Fiscal Year (Quarter)

(Unit : KRW)

	Hedges
	Fair value hedges
	Risks
	Currency risk
	Derivatives type
	Forward contract
Hedged item, assets	111,747,277,729
Description of line item in statement of financial position that includes hedged item	매출채권
Gain (loss) on change in fair value of hedged item used as basis for recognising hedge ineffectiveness	1,692,606,767

Ending of Last Fiscal Year

(Unit : KRW)

	Hedges
	Fair value hedges
	Risks
	Currency risk
	Derivatives type
	Forward contract
Hedged item, assets	202,807,648,817
Description of line item in statement of financial position that includes hedged item	매출채권
Gain (loss) on change in fair value of hedged item used as basis for recognising hedge ineffectiveness	13,642,987,958

Disclosure of information about amounts that affected statement of comprehensive income as result of hedge accounting

Ending of Current Fiscal Year (Quarter)

(Unit : KRW)

	Hedges
	Fair value hedges
	Risks

	Currency risk
	Derivatives type
	Forward contract
Gain (loss) on change in fair value of hedging instrument used as basis for recognising hedge ineffectiveness	(1,692,606,767)
Description of line item in statement of comprehensive income that includes recognised hedge ineffectiveness	파생상품평가이익/손실
Gain (loss) on hedge ineffectiveness recognised in profit or loss	0

Ending of Last Fiscal Year

(Unit : KRW)

	Hedges
	Fair value hedges
	Risks
	Currency risk
	Derivatives type
	Forward contract
Gain (loss) on change in fair value of hedging instrument used as basis for recognising hedge ineffectiveness	(13,642,987,958)
Description of line item in statement of comprehensive income that includes recognised hedge ineffectiveness	파생상품평가이익/손실
Gain (loss) on hedge ineffectiveness recognised in profit or loss	0

Disclosure of transfers of financial assets

	Disclosed Amount
Description of transfers of financial assets	연결실체는 수출입은행 등과의 매출채권 팩토링 계약에 따라 매출채권을 양도하였습니다. 이 거래는 해당 매출채권이 만기에 회수되지 않는 경우 연결실체가 은행 등에 그 회수되지 않은 매출채권 금액을 지급할 의무를 부담하고 있지 않습니다. 연결실체가 당분기말 현재 매출채권 팩토링으로 양도하였으나 양도 금융자산의 전부또는 일부가 제거조건을 충족하지 못하여 담보부 차입으로 회계처리한 매출채권의 장부금액은 없습니다.

## 6. Cash and cash equivalents (Consolidated)

### Details Of Cash And Cash Equivalents

Ending of Current Fiscal Year (Quarter) (Unit : KRW)

	Disclosed Amount
Balances with banks	13,791,578,714
Short-term investments, classified as cash equivalents	102,236,262,146
Cash and cash equivalents	116,027,840,860

Ending of Last Fiscal Year (Unit : KRW)

	Disclosed Amount
Balances with banks	18,312,527,045
Short-term investments, classified as cash equivalents	220,500,000,000
Cash and cash equivalents	238,812,527,045

## 7. Short-term deposits (Consolidated)

### Disclosure of short-term deposits, not classified as cash equivalents\_con

Ending of Current Fiscal Year (Quarter) (Unit : KRW)

	Financial assets, class
	Financial assets at amortised cost, class
	Deposits at amortised cost
	Term deposits
Short-term deposits, not classified as cash equivalents	320,428,653,493

Ending of Last Fiscal Year (Unit : KRW)

	Financial assets, class
	Financial assets at amortised cost, class
	Deposits at amortised cost
	Term deposits
Short-term deposits, not classified as cash equivalents	160,000,000,000

## 8. Trade and other receivables (Consolidated)

### Trade And Other Receivables

Ending of Current Fiscal Year (Quarter) (Unit : KRW)

	Disclosed Amount
Trade and other current receivables	360,737,653,758

Trade and other current receivables	Current trade receivables	356,036,532,202
	Short-term other receivables, net	471,371,452
	Current accrued income other than current contract assets	3,396,267,395
	Short-term loans, net	833,482,709
	Short-term deposits provided	0
Trade and other non-current receivables		8,619,026,770
Trade and other non-current receivables	Non-current trade receivables	0
	Long-term other receivables	0
	Long-term loans, net	1,461,480,038
	Long-term deposits provided, net	7,157,546,732

Ending of Last Fiscal Year

(Unit : KRW)

		Disclosed Amount
Trade and other current receivables		454,114,855,225
Trade and other current receivables	Current trade receivables	448,798,746,663
	Short-term other receivables, net	2,222,895,113
	Current accrued income other than current contract assets	2,053,758,755
	Short-term loans, net	1,039,454,694
	Short-term deposits provided	0
Trade and other non-current receivables		9,482,830,679
Trade and other non-current receivables	Non-current trade receivables	0
	Long-term other receivables	0
	Long-term loans, net	2,182,302,305
	Long-term deposits provided, net	7,300,528,374

## 9. Other financial assets and other current financial liabilities (Consolidated)

Disclosure of Other financial assets

Ending of Current Fiscal Year (Quarter)

(Unit : KRW)

	Financial assets, class	
	Financial assets at fair value, class	
	Derivatives	Equity investments
Other current financial assets	17,021,085	0

Other non-current financial assets	0	6,000,000,000
------------------------------------	---	---------------

Ending of Last Fiscal Year (Unit : KRW)

	Financial assets, class	
	Financial assets at fair value, class	
	Derivatives	Equity investments
Other current financial assets	0	0
Other non-current financial assets	0	0

Disclosure of other current financial liabilities

Ending of Current Fiscal Year (Quarter) (Unit : KRW)

	Financial liabilities, class
	Financial liabilities at fair value, class
	Derivatives
Other current financial liabilities	1,709,627,852

Ending of Last Fiscal Year (Unit : KRW)

	Financial liabilities, class
	Financial liabilities at fair value, class
	Derivatives
Other current financial liabilities	13,642,987,958

## 10. Other assets (Consolidated)

Disclosure Of Other Assets

Ending of Current Fiscal Year (Quarter) (Unit : KRW)

		Disclosed Amount
Other current assets		68,266,825,225
Other current assets	Current advances to suppliers	6,097,996,766
	Current prepaid expenses	62,168,828,459
Other non-current assets		28,038,824,354
Other non-current assets	Non-current prepayments	1,928,981,016
	Long-term prepaid expenses, net	26,109,843,338

Ending of Last Fiscal Year (Unit : KRW)

		Disclosed Amount
Other current assets		59,935,403,474
Other current assets	Current advances to suppliers	5,508,830,513

	Current prepaid expenses	54,426,572,961
Other non-current assets		52,660,261,648
Other non-current assets	Non-current prepayments	4,169,868,654
	Long-term prepaid expenses, net	48,490,392,994

## 11. Inventories (Consolidated)

Details of inventories

Ending of Current Fiscal Year (Quarter)

(Unit : KRW)

	Gross carrying amount	Allowance For Inventory Valuation	Total of Carrying amount
Current finished goods	113,572,328,839	(11,694,926,549)	101,877,402,290
Current work in progress	182,043,862,434	(32,449,059,854)	149,594,802,580
Current merchandise	21,168,050	(21,168,050)	0
Provisions for returns	73,903,362	0	73,903,362
Total current inventories	295,711,262,685	(44,165,154,453)	251,546,108,232

Ending of Last Fiscal Year

(Unit : KRW)

	Gross carrying amount	Allowance For Inventory Valuation	Total of Carrying amount
Current finished goods	82,031,918,754	(13,069,018,944)	68,962,899,810
Current work in progress	184,855,124,846	(42,485,832,758)	142,369,292,088
Current merchandise	21,168,050	(21,168,050)	0
Provisions for returns	107,624,679	0	107,624,679
Total current inventories	267,015,836,329	(55,576,019,752)	211,439,816,577

The amount of inventories recognized as cost of sales and inventory writedowns included in cost of sales and usage of inventory writedowns

Current Fiscal Year (Quarter)

(Unit : KRW)

	Cost of sales
Write-downs (reversals of write-downs) of inventories	(11,410,865,299)
Writeoffs of inventories	12,628,337,336
Cost of inventories recognised as expense during period	864,553,000,980

Quarter (or Half-Year) of Last Fiscal Year

(Unit : KRW)

	Cost of sales
Write-downs (reversals of write-downs) of inventories	(4,592,579,911)
Writeoffs of inventories	5,101,290,439
Cost of inventories recognised as expense during period	918,305,381,582

## 12. Interests in other entities (Consolidated)

(1) 당분기말과 전기말 현재 관계기업 및 공동기업투자 내역은 다음과 같습니다.

(단위: 원)							
회사명	소재지	주요 영업활동	결산월	당분기말		전기말	
				지분율(%)	장부금액	지분율(%)	장부금액
어드밴스드파워디바이스테크놀로지 주식회사	한국	반도체소자의 연구개발 및 설계	3월	49.00	5,018,430,564	49.00	4,878,207,481
					64		81
FJ Composite Materials Co., Ltd.	일본	복합재료의 개발, 제조, 판매업	5월	28.70	9,558,822,617	28.70	9,433,095,810
㈜텔레칩스(*)	한국	전자집적회로 제조업	12월	10.26	28,707,157,815	10.26	30,625,461,885
엘엑스벤처스신기술사업투자조합 1호	한국	벤처기업에 대한 투자	12월	23.33	2,563,665,124	23.33	2,687,918,416
합계					45,848,076,120		47,624,683,592

(\*) (주)텔레칩스의 지분율은 유효지분율이며 보유한 지분율이 20% 미만이지만, 이사를 임명할 수 있는 계약적 권리에 의하여 유의적 영향력을 행사하고 있습니다.

(2) 당분기와 전분기 중 관계기업 및 공동기업투자 변동내역은 다음과 같습니다.

### ① 당분기

(단위: 원)					
회사명	기초	배당금 수취	지분법손익	지분법자본변동	당분기말
어드밴스드파워디바이스테크놀로지 주식회사	4,878,207,481	-	140,223,083	-	5,018,430,564
FJ Composite Materials Co., Ltd.	9,433,095,810	(80,307,150)	134,393,678	71,640,279	9,558,822,617
㈜텔레칩스	30,625,461,885	(90,900,000)	(1,489,284,787)	(338,119,283)	28,707,157,815
엘엑스벤처스신기술사업투자조합 1호	2,687,918,416	-	(124,253,292)	-	2,563,665,124
합계	47,624,683,592	(171,207,150)	(1,338,921,318)	(266,479,004)	45,848,076,120

### ② 전분기

(단위: 원)					
회사명	기초	배당금 수취	지분법손익	지분법자본변동	전분기말
어드밴스드파워디바이스테크놀로지 주식회사	4,633,299,873	-	177,539,916	-	4,810,839,789

FJ Composite Materials Co., Ltd.	9,349,396,602	-	154,028,706	125,898,722	9,629,324,030
㈜텔레칩스	31,172,893,079	(303,000,000)	889,573,362	(126,359,655)	31,633,106,786
엘엑스벤처스신기술사업투자조합 1호	2,779,428,032	-	(94,963,131)	-	2,684,464,901
합계	47,935,017,586	(303,000,000)	1,126,178,853	(460,933)	48,757,735,506

### 13. Property, plant and equipment (Consolidated)

Disclosure of detailed information about property, plant and equipment

Current Fiscal Year (Quarter)

(Unit : KRW)

		Disclosed Amount
Reconciliation of changes in property, plant and equipment [abstract]		
Reconciliation of changes in property, plant and equipment [abstract]	Property, plant and equipment at beginning of period	111,129,212,477
	Additions other than through business combinations, property, plant and equipment	12,339,966,586
	Disposals, property, plant and equipment	(613,274,866)
	Depreciation, property, plant and equipment	(11,638,147,298)
	Increase (decrease) through other changes, property, plant and equipment	(373,911,159)
	Property, plant and equipment at end of period	110,843,845,740

Quarter (or Half-Year) of Last Fiscal Year

(Unit : KRW)

		Disclosed Amount
Reconciliation of changes in property, plant and equipment [abstract]		
Reconciliation of changes in property, plant and equipment [abstract]	Property, plant and equipment at beginning of period	104,427,738,469
	Additions other than through business combinations, property, plant and equipment	16,024,435,730

	Disposals, property, plant and equipment	(163,503,885)
	Depreciation, property, plant and equipment	(10,606,315,144)
	Increase (decrease) through other changes, property, plant and equipment	39,289,489
	Property, plant and equipment at end of period	109,721,644,659

#### 14. Intangible assets (Consolidated)

Disclosure of reconciliation of changes in intangible assets and goodwill

Current Fiscal Year (Quarter)

(Unit : KRW)

		Disclosed Amount
Reconciliation of changes in intangible assets and goodwill [abstract]		
Reconciliation of changes in intangible assets and goodwill [abstract]	Intangible assets and goodwill at beginning of period	84,391,556,772
	Additions other than through business combinations, intangible assets other than goodwill	6,553,997,601
	Disposals, intangible assets and goodwill	(2,575,879)
	Amortisation, intangible assets other than goodwill	(8,106,549,985)
	Increase (decrease) through other changes, intangible assets and goodwill	(11,169,807)
	Intangible assets and goodwill at end of period	82,825,258,702

Quarter (or Half-Year) of Last Fiscal Year

(Unit : KRW)

		Disclosed Amount
Reconciliation of changes in intangible assets and goodwill [abstract]		
Reconciliation of changes in intangible assets and goodwill [abstract]	Intangible assets and goodwill at beginning of period	73,937,288,123

	Additions other than through business combinations, intangible assets other than goodwill	15,888,623,909
	Disposals, intangible assets and goodwill	(124,327,232)
	Amortisation, intangible assets other than goodwill	(6,546,907,934)
	Increase (decrease) through other changes, intangible assets and goodwill	8,127,810
	Intangible assets and goodwill at end of period	83,162,804,676

### 15. Leases (Consolidated)

Disclosure of quantitative information about right-of-use assets

Current Fiscal Year (Quarter)

(Unit : KRW)

	Disclosed Amount
Right-of-use assets, at beginning of period	37,621,013,253
Additions to right-of-use assets	11,203,961,531
Decrease due to termination or cancellation of lease contracts, right-of-use assets	(3,635,726,261)
Depreciation, right-of-use assets	(8,153,659,084)
Increase (decrease) through other changes, right-of-use assets	(20,036,240)
Right-of-use assets, at end of period	37,015,553,199

Quarter (or Half-Year) of Last Fiscal Year

(Unit : KRW)

	Disclosed Amount
Right-of-use assets, at beginning of period	21,512,251,346
Additions to right-of-use assets	11,380,978,868
Decrease due to termination or cancellation of lease contracts, right-of-use assets	(528,681,854)
Depreciation, right-of-use assets	(6,767,392,510)
Increase (decrease) through other changes, right-of-use assets	41,014,423
Right-of-use assets, at end of period	25,638,170,273

Disclosure of expenses recognized in profit or loss and total cash outflows related to leases

Current Fiscal Year (Quarter)

(Unit : KRW)

	Disclosed Amount
Depreciation, right-of-use assets	8,153,659,084
Interest expense on lease liabilities	1,035,312,523
Expense relating to leases of low-value assets for which recognition exemption has been used	914,505,921
Cash outflow for leases	9,118,999,335

Quarter (or Half-Year) of Last Fiscal Year

(Unit : KRW)

	Disclosed Amount
Depreciation, right-of-use assets	6,767,392,510
Interest expense on lease liabilities	655,574,310
Expense relating to leases of low-value assets for which recognition exemption has been used	974,249,163
Cash outflow for leases	8,062,939,048

## 16. Trade and other payables (Consolidated)

Disclosure Of Trade And Other Payables

Ending of Current Fiscal Year (Quarter)

(Unit : KRW)

		Disclosed Amount
Trade and other current payables		259,738,410,611
Trade and other current payables	Current trade payables	162,100,890,250
	Short-term other Payables	51,354,390,642
	Current dividend payables	188,849
	Accruals classified as current	46,282,940,870
	Short-term guarantee deposit withholdings	0
Trade and other non-current payables		12,707,065,383
Trade and other non-current payables	Non-current trade payables	0
	Long-term other payables, net	10,756,833,769
	Accruals classified as non-current	62,355,914
	Long-term guarantee deposit withholdings, net	1,887,875,700

Ending of Last Fiscal Year

(Unit : KRW)

		Disclosed Amount
Trade and other current payables		256,019,699,057
Trade and other current	Current trade payables	153,443,980,008

payables	Short-term other Payables	92,134,579,457
	Current dividend payables	80,315
	Accruals classified as current	10,441,059,277
	Short-term guarantee deposit withholdings	0
Trade and other non-current payables		34,505,887,888
Trade and other non-current payables	Non-current trade payables	0
	Long-term other payables, net	32,632,512,188
	Accruals classified as non-current	0
	Long-term guarantee deposit withholdings, net	1,873,375,700

### 17-1. Other liabilities (Consolidated)

#### Disclosure Of Other Liabilities

Ending of Current Fiscal Year (Quarter)

(Unit : KRW)

		Disclosed Amount
Other current liabilities		21,450,039,771
Other current liabilities	Current advances received, representing current contract liabilities for performance obligations satisfied at point in time	9,085,914,169
	Short-term withholdings	1,601,895,881
	Other current provisions	10,762,229,721
Other non-current liabilities		6,625,254,740
Other non-current liabilities	Other non-current provisions	2,950,787,886
	Non-current provisions for employee benefits	3,674,466,854

Ending of Last Fiscal Year

(Unit : KRW)

		Disclosed Amount
Other current liabilities		50,866,220,497
Other current liabilities	Current advances received, representing current contract liabilities for performance obligations satisfied at point in time	11,808,381,167
	Short-term withholdings	5,429,097,595
	Other current provisions	33,628,741,735
Other non-current liabilities		6,623,694,362

Other non-current liabilities	Other non-current provisions	3,165,135,898
	Non-current provisions for employee benefits	3,458,558,464

17-2. Other liabilities – Other provisions (Consolidated)

Disclosure of other provisions

Current Fiscal Year (Quarter)

(Unit : KRW)

	Warranty provision	Refunds provision	Provision for decommissioning, restoration and rehabilitation costs	Miscellaneous other provisions	Total of Other provisions
Other provisions at beginning of period	30,548,478,510	162,580,997	3,165,135,898	2,917,682,228	36,793,877,633
Additional provisions, other provisions	1,220,761,377	0	0	35,728,378	1,256,489,755
Unused provision reversed, other provisions	0	(56,646,457)	(173,767,600)	0	(230,414,057)
Provision used, other provisions	(23,929,614,742)	0	(41,897,000)	(136,740,570)	(24,108,252,312)
Increase (decrease) through net exchange differences, other provisions	0	0	1,316,588	0	1,316,588
Other provisions at end of period	7,839,625,145	105,934,540	2,950,787,886	2,816,670,036	13,713,017,607
Description of nature of obligation, other provisions	연결실체는 제품판매 보증과 관련하여 연결 실체가 부담하게 될 것으로 예상되는 보증 비용을 판매보증충당 부채로 계상하고, 이에 상당하는 전입액을 판매비와관리비로 인식하고 있습니다.	한편, 연결실체는 기업회계기준서 제 1115호에 따라 반품 시 취소될 수익 부분에 해당하는 금액을 반품충당부채 및 매출 차감으로 인식하고 있습니다.			

Quarter (or Half-Year) of Last Fiscal Year

(Unit : KRW)

	Warranty provision	Refunds provision	Provision for decommissioning, restoration and rehabilitation costs	Miscellaneous other provisions	Total of Other provisions
Other provisions at beginning of period	15,286,080,704	190,923,258	2,498,715,452	0	17,975,719,414

Additional provisions, other provisions	2,725,009,929	0	7,380,464	236,263,805	2,968,654,198
Unused provision reversed, other provisions	0	(42,199,928)	0	0	(42,199,928)
Provision used, other provisions	(7,987,163,216)	0	0	0	(7,987,163,216)
Increase (decrease) through net exchange differences, other provisions					
Other provisions at end of period	10,023,927,417	148,723,330	2,506,095,916	236,263,805	12,915,010,468
Description of nature of obligation, other provisions	연결실체는 제품판매 보증과 관련하여 연결 실체가 부담하게 될 것으로 예상되는 보증 비용을 판매보증충당 부채로 계상하고, 이에 상당하는 전입액을 판매비와관리비로 인식하고 있습니다.	한편, 연결실체는 기업회계기준서 제 1115호에 따라 반품 시 취소될 수익 부분에 해당하는 금액을 반품충당부채 및 매출 차감으로 인식하고 있습니다.			

## 18. Share capital, reserves and other equity interest (Consolidated)

### Disclosure of classes of share capital

Ending of Current Fiscal Year (Quarter)

(Unit : KRW)

	Ordinary shares
Number of shares authorised	50,000,000
Par value per share	500
Number of shares issued	16,264,300
Issued capital	8,132,150,000

Ending of Last Fiscal Year

(Unit : KRW)

	Ordinary shares
Number of shares authorised	50,000,000
Par value per share	500
Number of shares issued	16,264,300
Issued capital	8,132,150,000

Disclosure Of Capital Surplus

Ending of Current Fiscal Year (Quarter)

(Unit : KRW)

		Disclosed Amount
Capital surplus		76,343,170,500
Capital surplus	Share premium	66,560,617,129
	Other capital surplus	9,782,553,371

Ending of Last Fiscal Year

(Unit : KRW)

		Disclosed Amount
Capital surplus		76,343,170,500
Capital surplus	Share premium	66,560,617,129
	Other capital surplus	9,782,553,371

19. Other Elements Of Stockholder's Equity (Consolidated)

Elements Of Other Stockholder's Equity

Ending of Current Fiscal Year (Quarter)

(Unit : KRW)

	Disclosed Amount
Reserve of exchange differences on translation	1,001,824,326
Comprehensive income gains losses equity method securities	(958,747,116)
Reserve of gains and losses on financial assets measured at fair value through other comprehensive income	(380,807,731)
Total accumulated other comprehensive income	(337,730,521)

Ending of Last Fiscal Year

(Unit : KRW)

	Disclosed Amount
Reserve of exchange differences on translation	1,224,674,040
Comprehensive income gains losses equity method securities	(692,268,112)
Reserve of gains and losses on financial assets measured at fair value through other comprehensive income	(380,807,731)
Total accumulated other comprehensive income	151,598,197

20. Statement of Appropriation of Retained Earnings (Consolidated)

Disclosure of retained earnings details

Ending of Current Fiscal Year (Quarter)

(Unit : KRW)

	Disclosed Amount
--	------------------

Statutory reserve	4,066,075,000
Unappropriated retained earnings	1,015,629,116,287
Retained earnings total	1,019,695,191,287

Ending of Last Fiscal Year (Unit : KRW)

	Disclosed Amount
Statutory reserve	4,066,075,000
Unappropriated retained earnings	990,893,532,809
Retained earnings total	994,959,607,809

Disclosure of changes retained earnings before appropriation

Current Fiscal Year (Quarter) (Unit : KRW)

	Equity
	Equity attributable to owners of parent
	Retained earnings
	Retained earnings before appropriations(accumulated deficit before disposition)
Equity at beginning of period	990,893,532,809
Dividends recognised as distributions to owners	(39,034,320,000)
Profit (loss)	63,765,988,081
Other comprehensive income, net of tax, gains (losses) on remeasurements of defined benefit plans	3,915,397
Equity at end of period	1,015,629,116,287

Quarter (or Half-Year) of Last Fiscal Year (Unit : KRW)

	Equity
	Equity attributable to owners of parent
	Retained earnings
	Retained earnings before appropriations(accumulated deficit before disposition)
Equity at beginning of period	889,295,260,387
Dividends recognised as distributions to owners	(29,275,740,000)
Profit (loss)	109,737,047,238
Other comprehensive income, net of tax, gains (losses) on remeasurements of defined benefit plans	(201,174,054)

Equity at end of period	969,555,393,571
-------------------------	-----------------

## 21. Earnings per share (Consolidated)

Earnings per share

Current Fiscal Year (Quarter)

(Unit : KRW)

	Share capital	
	Ordinary shares	
	Three months	Cumulative
Profit (loss), attributable to ordinary equity holders of parent entity, used in calculating basic earnings per share	10,089,752,474	63,765,988,081
Weighted average number of ordinary shares used in calculating basic earnings per share	16,264,300	16,264,300
Basic earnings (loss) per share	620	3,921
Diluted earnings (loss) per share	620	3,921

Quarter (or Half-Year) of Last Fiscal Year

(Unit : KRW)

	Share capital	
	Ordinary shares	
	Three months	Cumulative
Profit (loss), attributable to ordinary equity holders of parent entity, used in calculating basic earnings per share	25,358,702,362	109,737,047,238
Weighted average number of ordinary shares used in calculating basic earnings per share	16,264,300	16,264,300
Basic earnings (loss) per share	1,559	6,747
Diluted earnings (loss) per share	1,559	6,747

Weighted average number of shares used in calculation of basic earnings per share

Current Fiscal Year (Quarter)

	Share capital	
	Ordinary shares	
	Three months	Cumulative
Number of shares issued		16,264,300
Number of shares in entity held by entity or by its subsidiaries or associates		0
Number of shares outstanding		16,264,300
Weighted number of days	92일/92일	273일/273일
Weighted average number of ordinary shares used in calculating basic earnings per share	16,264,300	16,264,300

Quarter (or Half-Year) of Last Fiscal Year

	Share capital	
	Ordinary shares	
	Three months	Cumulative
Number of shares issued		16,264,300
Number of shares in entity held by entity or by its subsidiaries or associates		0
Number of shares outstanding		16,264,300
Weighted number of days	92일/92일	274일/274일
Weighted average number of ordinary shares used in calculating basic earnings per share	16,264,300	16,264,300

22. Finance income and expense (Consolidated)

Finance Income And Finance Cost

Current Fiscal Year (Quarter)

(Unit : KRW)

		Carrying amount	
		Disclosed Amount	
		Three months	Cumulative
Finance income		1,717,808,690	21,086,462,984
Finance income	Interest income	3,603,074,572	11,377,268,101
	Gains on foreign currency transactions financial income	273,476	248,076,952
	Gains on foreign exchange translations financial income	40,263,645	40,263,643

	Gains on transaction of derivative financial instruments financial income	6,197,170,627	9,403,833,203
	Gains on valuation of derivative financial instruments financial income	(8,122,973,630)	17,021,085
Finance costs		3,440,780,849	11,171,216,876
Finance costs	Interest expense	807,370,451	2,498,679,827
	Losses on foreign currency transactions financial expense	245,658	238,770,075
	Losses on foreign exchange translations financial expense	(603,212,359)	1,032,394
	Losses on disposition of receivables financial expense	1,454,372,583	6,232,594,309
	Losses on transaction of derivative financial instruments financial expense	72,808,538	490,512,419
	Losses on valuation of derivative financial instruments financial expense	1,709,195,978	1,709,627,852

Quarter (or Half-Year) of Last Fiscal Year

(Unit : KRW)

		Carrying amount	
		Disclosed Amount	
		Three months	Cumulative
Finance income		7,256,604,565	16,382,426,844
Finance income	Interest income	4,496,810,331	13,552,126,955
	Gains on foreign currency transactions financial income	122,526,750	157,052,094
	Gains on foreign exchange translations financial income	(35,980,290)	21
	Gains on transaction of derivative financial instruments financial income	1,518,551,474	1,518,551,474
	Gains on valuation of derivative financial instruments financial income	1,154,696,300	1,154,696,300
Finance costs		2,326,325,197	15,633,639,221
Finance costs	Interest expense	669,226,937	1,188,188,218
	Losses on foreign currency transactions financial expense	116,772,587	151,432,970
	Losses on foreign exchange translations financial expense	61,637,399	61,637,400

	Losses on disposition of receivables financial expense	3,218,114,017	13,946,802,832
	Losses on transaction of derivative financial instruments financial expense	112,440,875	112,440,875
	Losses on valuation of derivative financial instruments financial expense	(1,851,866,618)	173,136,926

### 23. Other income and expense (Consolidated)

#### Other Income And Expenses

Current Fiscal Year (Quarter)

(Unit : KRW)

		Carrying amount	
		Disclosed Amount	
		Three months	Cumulative
Non-operating Income		1,276,770,111	19,845,926,272
Non-operating Income	Foreign exchange gain	2,158,107,451	14,798,529,781
	Gain on foreign exchange translations	(896,683,632)	4,737,469,370
	Gains on disposals of property, plant and equipment	14,763,714	268,125,307
	Gains on disposals of intangible assets	0	0
	Miscellaneous Income	582,578	41,801,814
Non-operating expense		(170,017,979)	30,304,538,899
Non-operating expense	Foreign exchange loss	9,198,371,957	27,702,394,200
	Loss on foreign exchange translations	(10,283,788,340)	1,233,567,536
	Losses on disposals of property, plant and equipment	395,763,191	487,034,396
	Impairment loss recognised in profit or loss, property, plant and equipment	0	359,113,117
	Losses on disposal of intangible assets	1,000	2,575,879
	Donations	0	0
	Miscellaneous Losses	519,634,213	519,853,771

Quarter (or Half-Year) of Last Fiscal Year

(Unit : KRW)

		Carrying amount	
		Disclosed Amount	

		Three months	Cumulative
Non-operating Income		2,888,366,789	17,398,736,804
Non-operating Income	Foreign exchange gain	3,921,018,303	14,811,040,278
	Gain on foreign exchange translations	(1,043,157,811)	2,513,631,730
	Gains on disposals of property, plant and equipment	4,816,130	29,425,953
	Gains on disposals of intangible assets	(1,914,870)	0
	Miscellaneous Income	7,605,037	44,638,843
Non-operating expense		8,101,722,512	15,978,310,370
Non-operating expense	Foreign exchange loss	4,136,168,974	10,736,081,140
	Loss on foreign exchange translations	3,989,292,758	4,904,565,447
	Losses on disposals of property, plant and equipment	(34,360,704)	171,376,900
	Impairment loss recognised in profit or loss, property, plant and equipment	0	39,936,643
	Losses on disposal of intangible assets	9,683,262	124,327,232
	Donations	0	1,000,000
	Miscellaneous Losses	938,222	1,023,008

#### 24-1. Operating income (Consolidated)

##### Disclosure Of Summary Of Revenue

Current Fiscal Year (Quarter)

(Unit : KRW)

		Carrying amount	
		Disclosed Amount	
		Three months	Cumulative
Revenue		394,391,131,472	1,249,238,954,809
Revenue	Revenue from sale of goods product	393,283,159,205	1,241,218,862,430
	Other revenue	1,107,972,267	8,020,092,379
Cost of sales		273,980,181,038	851,279,941,304
Cost of sales	Cost of sales from sale of goods product	273,780,657,382	847,532,900,643
	Other cost of sales	199,523,656	3,747,040,661
Selling, general and administrative expense		106,380,021,154	314,008,491,881

Operating income(loss)	14,030,929,280	83,950,521,624
------------------------	----------------	----------------

Quarter (or Half-Year) of Last Fiscal Year

(Unit : KRW)

		Carrying amount	
		Disclosed Amount	
		Three months	Cumulative
Revenue		419,850,482,315	1,363,055,491,368
Revenue	Revenue from sale of goods product	419,749,787,808	1,354,389,613,020
	Other revenue	100,694,507	8,665,878,348
Cost of sales		280,552,563,187	913,419,308,856
Cost of sales	Cost of sales from sale of goods product	280,469,744,100	907,472,428,252
	Other cost of sales	82,819,087	5,946,880,604
Selling, general and administrative expense		105,020,036,808	313,064,445,092
Operating income(loss)		34,277,882,320	136,571,737,420

24-2. Operating income – Selling, general and administrative expense (Consolidated)

Selling, General And Administrative Expense

Current Fiscal Year (Quarter)

(Unit : KRW)

		Carrying amount	
		Disclosed Amount	
		Three months	Cumulative
Selling general and administrative expense		106,380,021,154	314,008,491,881
Selling general and administrative expense	SalariesWages And Bonus Selling General Administrative Expenses	20,448,212,481	61,364,204,678
	Provision for severance indemnities, selling and general administrative expenses	2,897,383,714	5,614,372,868
	Employee benefits, selling and general administrative expenses	4,594,009,767	12,901,758,882
	Travel expenses, selling and general administrative expenses	764,300,698	2,322,260,086
	Rental expenses, selling and general administrative expenses	672,155,299	2,030,393,989
	Commissions, selling and general administrative expenses	11,012,649,532	31,963,440,387
	Depreciation expense, selling and general administrative expenses	4,352,738,230	13,154,928,252
	Amortisation expense, selling and general administrative expenses	2,092,601,235	6,149,762,521

	Product warranty expenses recovery, selling and general administrative expenses	(238,419,839)	1,220,761,377
	Expenses of provisions for restoration, selling and general administrative expenses	0	(173,767,600)
	Ordinary development expense, selling and general administrative expenses	56,520,078,806	167,960,713,511
	Miscellaneous expenses	3,264,311,231	9,499,662,930

Quarter (or Half-Year) of Last Fiscal Year

(Unit : KRW)

		Carrying amount	
		Disclosed Amount	
		Three months	Cumulative
Selling general and administrative expense		105,020,036,808	313,064,445,092
Selling general and administrative expense	SalariesWages And Bonus Selling General Administrative Expenses	20,348,076,470	61,912,630,392
	Provision for severance indemnities, selling and general administrative expenses	1,265,297,226	3,811,237,100
	Employee benefits, selling and general administrative expenses	4,113,492,162	12,248,643,504
	Travel expenses, selling and general administrative expenses	848,533,199	2,492,861,951
	Rental expenses, selling and general administrative expenses	686,932,078	2,144,700,108
	Commissions, selling and general administrative expenses	10,662,346,748	28,362,553,785
	Depreciation expense, selling and general administrative expenses	3,439,731,691	9,612,528,804
	Amortisation expense, selling and general administrative expenses	1,879,757,178	4,954,872,107
	Product warranty expenses recovery, selling and general administrative expenses	(135,967,770)	2,725,009,929
	Expenses of provisions for restoration, selling and general administrative expenses	0	0
	Ordinary development expense, selling and general administrative expenses	58,632,408,509	176,314,041,022
	Miscellaneous expenses	3,279,429,317	8,485,366,390

## 25. Employee benefits (Consolidated)

### Disclosure of defined benefit plans

Ending of Current Fiscal Year (Quarter)

(Unit : KRW)

	Disclosed Amount
Description of type of plan	연결실체는 종업원의 퇴직시 임금수준과 근속년수에 따라 정해지는 퇴직급여를 종업원에게 일시금으로 지급하고 있으며, 이는 확정급여제도로 분류됩니다. 동 퇴직급여제도는 법적 요건 충족시 종업원에게 중간정산을 허용하며, 중간정산 후의 퇴직금 산정을위한 근속연수는 정산시점으로부터 새로이 기산됩니다.
Defined benefit obligation, at present value	79,427,833,630
Plan assets, at fair value	(77,297,126,476)
Net defined benefit liability (asset)	2,130,707,154

Ending of Last Fiscal Year

(Unit : KRW)

	Disclosed Amount
Description of type of plan	연결실체는 종업원의 퇴직시 임금수준과 근속년수에 따라 정해지는 퇴직급여를 종업원에게 일시금으로 지급하고 있으며, 이는 확정급여제도로 분류됩니다. 동 퇴직급여제도는 법적 요건 충족시 종업원에게 중간정산을 허용하며, 중간정산 후의 퇴직금 산정을위한 근속연수는 정산시점으로부터 새로이 기산됩니다.
Defined benefit obligation, at present value	76,275,678,979
Plan assets, at fair value	(82,070,802,814)
Net defined benefit liability (asset)	(5,795,123,835)

### Disclosure of net defined benefit liability (asset)

Current Fiscal Year (Quarter)

(Unit : KRW)

	Present value of defined benefit obligation	Plan assets	Total of Net defined benefit liability (asset)
Net defined benefit liability (asset) at beginning of period	76,275,678,979	(82,070,802,814)	(5,795,123,835)
Increase in net defined benefit liability (asset) resulting from current service cost	8,223,046,593		8,223,046,593
Increase (decrease) in net defined benefit liability (asset) resulting from past service cost	178,154,974		178,154,974
Increase (decrease) in net defined benefit liability (asset) resulting from interest expense (income)	2,120,423,034	(2,287,227,410)	(166,804,376)

Changes in net defined benefit liability (asset) resulting from gain (loss) on remeasurement in other comprehensive income [abstract]				
Changes in net defined benefit liability (asset) resulting from gain (loss) on remeasurement in other comprehensive income [abstract]	Decrease (increase) in net defined benefit liability (asset) resulting from gain (loss) on remeasurement in other comprehensive income		(5,091,544)	(5,091,544)
Increase (decrease) in net defined benefit liability (asset) resulting from movement of employees		(28,459,330)		(28,459,330)
Increase (decrease) in net defined benefit liability (asset) resulting from payments from plan		(7,341,010,620)	7,039,810,543	(301,200,077)
Increase (decrease) in net defined benefit liability (asset) resulting from administration costs not reflected in return on plan assets			26,184,749	26,184,749
Net defined benefit liability (asset) at end of period		79,427,833,630	(77,297,126,476)	2,130,707,154

Quarter (or Half-Year) of Last Fiscal  
Year

(Unit : KRW)

		Present value of defined benefit obligation	Plan assets	Total of Net defined benefit liability (asset)
Net defined benefit liability (asset) at beginning of period		77,449,337,342	(87,138,882,974)	(9,689,545,632)
Increase in net defined benefit liability (asset) resulting from current service cost		8,394,491,811		8,394,491,811
Increase (decrease) in net defined benefit liability (asset) resulting from past service cost		0		0
Increase (decrease) in net defined benefit liability (asset) resulting from interest expense (income)		2,467,443,714	(2,787,750,144)	(320,306,430)
Changes in net defined benefit liability (asset) resulting from gain (loss) on remeasurement in other comprehensive income [abstract]				
Changes in net defined benefit liability (asset) resulting from gain (loss) on remeasurement in other comprehensive income [abstract]	Decrease (increase) in net defined benefit liability (asset) resulting from gain (loss) on remeasurement in other comprehensive income		261,604,751	261,604,751
Increase (decrease) in net defined benefit liability (asset) resulting from movement of employees		(15,978,880)		(15,978,880)
Increase (decrease) in net defined benefit liability (asset) resulting from payments from plan		(12,876,476,740)	12,599,880,644	(276,596,096)
Increase (decrease) in net defined benefit liability (asset) resulting from administration costs not reflected in return on plan assets			137,012,109	137,012,109
Net defined benefit liability (asset) at end of period		75,418,817,247	(76,928,135,614)	(1,509,318,367)

Disclosure Of Post employmentBenefit ExpenseDefined BenefitPlans  
Current Fiscal Year (Quarter)

(Unit : KRW)

		Disclosed Amount
Post-employment benefit expense in profit or loss, defined benefit plans [abstract]		
Post-employment benefit expense in profit or loss, defined benefit plans [abstract]	Current service cost, defined benefit plans	8,223,046,593
	Past service cost, defined benefit plans	178,154,974
	Interest expense (income), defined benefit plans Net	(166,804,376)
	Administration costs not reflected in return on plan assets, defined benefit plans	26,184,749
	Total post-employment benefit expense in profit or loss, defined benefit plans	8,260,581,940

Quarter (or Half-Year) of Last Fiscal Year

(Unit : KRW)

		Disclosed Amount
Post-employment benefit expense in profit or loss, defined benefit plans [abstract]		
Post-employment benefit expense in profit or loss, defined benefit plans [abstract]	Current service cost, defined benefit plans	8,394,491,811
	Past service cost, defined benefit plans	0
	Interest expense (income), defined benefit plans Net	(320,306,430)
	Administration costs not reflected in return on plan assets, defined benefit plans	137,012,109
	Total post-employment benefit expense in profit or loss, defined benefit plans	8,211,197,490

26. Income taxes (Consolidated)

Reconciliation of accounting profit multiplied by applicable tax rates  
Current Fiscal Year (Quarter)

	Disclosed Amount

Description of tax expense	법인세비용은 전체 회계연도에 대해서 예상되는 최선의 가중평균 연간법인세율의 추정에 기초하여 인식하였습니다.
Average effective tax rate	0.2230

Quarter (or Half-Year) of Last Fiscal Year

	Disclosed Amount
Description of tax expense	법인세비용은 전체 회계연도에 대해서 예상되는 최선의 가중평균 연간법인세율의 추정에 기초하여 인식하였습니다.
Average effective tax rate	0.2150

## 27. Cash flow statement (Consolidated)

Cash flows from (used in) operating activities

Current Fiscal Year (Quarter)

(Unit : KRW)

		Disclosed Amount
Adjustments for reconcile profitloss abstract		
Adjustments for reconcile profitloss abstract	Adjustments for income tax expense	18,302,245,706
	Adjustments for depreciation expense	19,791,806,382
	Adjustments for write-downs of inventories	0
	Adjustments for reversals of inventories	(11,410,865,299)
	Adjustments for reversal of provisions for returns	33,721,317
	Adjustments for losses from inventory writeoff	12,628,337,336
	Adjustments for refunds provision	(56,646,457)
	Adjustments for gain on disposition of tangible assets	(268,125,307)
	Adjustments for losses on disposition of property plant and equipment	487,034,396
	Adjustments for losses on disposals of intangible assets	2,575,879
	Adjustments for impairment losses of property plant and equipment	359,113,117

	Adjustments for amortisation expense	8,106,549,985
	Adjustments for provision for severance indemnities	8,260,581,940
	Adjustments for gain on foreign exchange translations	(4,777,733,013)
	Adjustments for losses on foreign exchange translations	1,234,599,930
	Adjustments for interest income	(11,377,268,101)
	Adjustments for interest expense	2,498,679,827
	Adjustments for product warranty expenses	1,220,761,377
	Adjustments for expense of other provisions	35,728,378
	Adjustments for other long-term employee benefits	333,708,390
	Adjustments for gains on change in fair value of derivatives	(17,021,085)
	Adjustments for losses on change in fair value of derivatives	1,709,627,852
	Adjustments for reversal of provision for decommissioning, restoration, and rehabilitation costs	(173,767,600)
	Adjustments for profits of associates and joint ventures accounted for using equity method	1,338,921,318
	Other adjustments to reconcile profit (loss)	0
	Adjustments to reconcile profit (loss)	48,262,566,268
Adjustments for assets liabilities of operating activities abstract		
Adjustments for assets liabilities of operating activities abstract	Adjustments for decrease (increase) in trade accounts receivable	95,086,747,611
	Adjustments for decrease (increase) in other operating receivables	2,058,154,035

	Adjustments for decrease (increase) in other assets	14,590,810,280
	Adjustments for decrease (increase) in inventories	(41,357,485,009)
	Adjustments for increase (decrease) in trade accounts payable	8,009,581,683
	Adjustments for increase (decrease) in other liabilities	(30,658,144,843)
	Adjustments for increase (decrease) in other operating payables	(21,443,485,660)
	Adjustments for increase (decrease) in non-current provisions for employee benefits	(117,800,000)
	Adjustments for increase (decrease) in employee benefit liabilities	(329,659,407)
	Adjustments for increase decrease in other financial liabilities	(13,642,987,958)
	Adjustments for assets and liabilities of operating activities	12,195,730,732

Quarter (or Half-Year) of Last Fiscal Year

(Unit : KRW)

		Disclosed Amount
Adjustments for reconcile profit/loss abstract		
Adjustments for reconcile profit/loss abstract	Adjustments for income tax expense	30,130,083,092
	Adjustments for depreciation expense	17,373,707,654
	Adjustments for write-downs of inventories	0
	Adjustments for reversals of inventories	(4,592,579,911)
	Adjustments for reversal of provisions for returns	28,351,115
	Adjustments for losses from inventory writeoff	5,101,290,439
	Adjustments for refunds provision	(42,199,928)
	Adjustments for gain on	(29,425,953)

disposition of tangible assets	
Adjustments for losses on disposition of property plant and equipment	171,376,900
Adjustments for losses on disposals of intangible assets	124,327,232
Adjustments for impairment losses of property plant and equipment	39,936,643
Adjustments for amortisation expense	6,546,907,934
Adjustments for provision for severance indemnities	8,211,197,490
Adjustments for gain on foreign exchange translations	(2,513,631,751)
Adjustments for losses on foreign exchange translations	4,966,202,847
Adjustments for interest income	(13,552,126,955)
Adjustments for interest expense	1,188,188,218
Adjustments for product warranty expenses	2,725,009,929
Adjustments for expense of other provisions	236,263,805
Adjustments for other long-term employee benefits	294,027,417
Adjustments for gains on change in fair value of derivatives	(1,154,696,300)
Adjustments for losses on change in fair value of derivatives	173,136,926
Adjustments for reversal of provision for decommissioning, restoration, and rehabilitation costs	0
Adjustments for profits of associates and joint ventures accounted for using equity method	(1,126,178,853)
Other adjustments to reconcile profit (loss)	(158,421)

	Adjustments to reconcile profit (loss)	54,299,009,569
Adjustments for assets liabilities of operating activities abstract		
Adjustments for assets liabilities of operating activities abstract	Adjustments for decrease (increase) in trade accounts receivable	(123,575,746,467)
	Adjustments for decrease (increase) in other operating receivables	(5,245,385,608)
	Adjustments for decrease (increase) in other assets	14,839,779,392
	Adjustments for decrease (increase) in inventories	97,281,350,869
	Adjustments for increase (decrease) in trade accounts payable	88,948,346,832
	Adjustments for increase (decrease) in other liabilities	(14,354,880,934)
	Adjustments for increase (decrease) in other operating payables	95,161,982
	Adjustments for increase (decrease) in non-current provisions for employee benefits	(120,200,000)
	Adjustments for increase (decrease) in employee benefit liabilities	(292,574,976)
	Adjustments for increase decrease in other financial liabilities	0
	Adjustments for assets and liabilities of operating activities	57,575,851,090

Disclose of significant noncash transaction

Current Fiscal Year (Quarter)

(Unit : KRW)

	Disclosed Amount
Transfer from construction in progress, progress, property, plant and equipment	9,675,019,298
Transfer from construction in progress, intangible assets	6,468,674,592
Increase(decrease) in accounts payable other relating to the acquisition of property and equipment and intangible assets	(3,455,350,280)

Increase(decrease) in accounts receivables other relating to the sale of property and equipment	189,900,000
Recognition of right of use assets arising from lease agreements	11,203,961,531
Reclassification of lease liabilities between current and non current	6,535,520,265
Reclassification of loans and receivables between current and noncurrent	524,719,822

Quarter (or Half-Year) of Last Fiscal Year

(Unit : KRW)

	Disclosed Amount
Transfer from construction in progress, progress, property, plant and equipment	17,962,638,769
Transfer from construction in progress, intangible assets	25,615,662,914
Increase(decrease) in accounts payable other relating to the acquisition of property and equipment and intangible assets	(2,821,638,296)
Increase(decrease) in accounts receivables other relating to the sale of property and equipment	0
Recognition of right of use assets arising from lease agreements	11,373,644,154
Reclassification of lease liabilities between current and non current	6,700,427,459
Reclassification of loans and receivables between current and noncurrent	599,485,675

Disclosure of reconciliation of liabilities arising from financing activities

Current Fiscal Year (Quarter)

(Unit : KRW)

	Dividend payables	Lease liabilities	Total of Liabilities arising from financing activities
Liabilities arising from financing activities at beginning of period	80,315	37,127,708,092	37,127,788,407
Increase (decrease) through financing cash flows, liabilities arising from financing activities	(39,034,211,466)	(7,169,180,891)	(46,203,392,357)
Increase (decrease) through other changes, liabilities arising from financing activities	39,034,320,000	7,459,425,927	46,493,745,927

Liabilities arising from financing activities at end of period	188,849	37,417,953,128	37,418,141,977
--	---------	----------------	----------------

Quarter (or Half-Year) of Last Fiscal Year

(Unit : KRW)

	Dividend payables	Lease liabilities	Total of Liabilities arising from financing activities
Liabilities arising from financing activities at beginning of period	0	21,124,455,534	21,124,455,534
Increase (decrease) through financing cash flows, liabilities arising from financing activities	(29,275,659,685)	(6,433,115,575)	(35,708,775,260)
Increase (decrease) through other changes, liabilities arising from financing activities	29,275,740,000	10,874,588,009	40,150,328,009
Liabilities arising from financing activities at end of period	80,315	25,565,927,968	25,566,008,283

## 28. Restricted financial assets (Consolidated)

Restricted financial assets

Ending of Current Fiscal Year (Quarter)

(Unit : KRW)

	Financial assets, class
	Financial assets at amortised cost, class
	Other receivables
Restricted financial assets	2,000,000
Explanation of restricted financial assets	당좌개설보증금

Ending of Last Fiscal Year

(Unit : KRW)

	Financial assets, class
	Financial assets at amortised cost, class
	Other receivables
Restricted financial assets	2,000,000
Explanation of restricted financial assets	당좌개설보증금

## 29. Related party (Consolidated)

당분기말과 전기말 현재 연결실체의 특수관계자 내역

특수관계 종류	당분기말	전기말
관계기업 및 공동기업	어드밴스드파워디바이스테크놀로지 주식회사	어드밴스드파워디바이스테크놀로지 주식회사
	FJ Composite Materials Co.,Ltd. (주)텔레칩스	FJ Composite Materials Co.,Ltd (주)텔레칩스
	엘엑스벤처스신기술사업투자조합 1호	엘엑스벤처스신기술사업투자조합 1호
연결실체에 유의적인 영향력을 행사하는 회사	(주)LX홀딩스	(주)LX홀딩스
기타	(주)LX홀딩스의 공동기업	(주)LX홀딩스의 공동기업
	대규모기업집단 계열회사	대규모기업집단 계열회사

Disclosure of transactions between related parties

Current Fiscal Year (Quarter)

(Unit : KRW)

Entity's total for related parties														
Related parties														
	Associates and Joint ventures where entity is venture		Entities with joint control or significant influence over entity		Large business group									
	FJ composite materials member		LX holdings member		LX pantos co ltd member		LX MDI co ltd member		LX hausys co ltd member		LX International co ltd member		LX International japan ltd member	
	Three months	Cumulative	Three months	Cumulative	Three months	Cumulative	Three months	Cumulative	Three months	Cumulative	Three months	Cumulative	Three months	Cumulative
Purchases of goods, related party transactions	0	7,559,620	766,129,000	2,492,439,000	1,119,756,577	3,332,569,367	385,018,620	915,500,120	0	40,498,577	0	0	8,130,398	24,792,142

Quarter (or Half-Year) of Last Fiscal Year

(Unit : KRW)

Entity's total for related parties														
Related parties														
	Associates and Joint ventures where entity is venture		Entities with joint control or significant influence over entity		Large business group									
	FJ composite materials member		LX holdings member		LX pantos co ltd member		LX MDI co ltd member		LX hausys co ltd member		LX International co ltd member		LX International japan ltd member	
	Three months	Cumulative	Three months	Cumulative	Three months	Cumulative	Three months	Cumulative	Three months	Cumulative	Three months	Cumulative	Three months	Cumulative
Purchases of goods, related party transactions	2,578,260	1,392,773,195	833,170,000	2,716,563,000	1,201,673,438	3,526,886,837	270,210,580	737,435,850	68,512,500	68,512,500	0	4,343,868	7,746,963	31,011,025

Disclosure of outstanding balances for related party transactions

Ending of Current Fiscal Year (Quarter)

(Unit : KRW)

Entity's total for related parties														
Related parties														
	Associates and Joint ventures where entity is venture		Entities with joint control or significant influence over entity		Large business group									
	FJ composite materials		LX holdings member		LX pantos co ltd member		LX MDI co ltd member		LX hausys co ltd member		LX International co ltd member		LX International japan ltd member	
	Total of Entity's total for related parties													

	member					
Amounts receivable, related party transactions	76,291,793	299,329,000	0	0	0	375,620,793
Amounts payable, related party transactions	0	0	708,816,698	54,765,020	0	763,581,718
Explanation of details of guarantees given or received of outstanding balances for related party transaction						연결실체가 특수관계자를 위하여 제공하거나 특수관계자로부터 제공받고 있는 담보 및 보증 내역은 없습니다.

Ending of Last Fiscal Year

(Unit : KRW)

	Entity's total for related parties					Total of Entity's total for related parties
	Related parties					
	Associates and Joint ventures where entity is venture	Entities with joint control or significant influence over entity	Large business group			
	FJ composite materials member	LX holdings member	LX pantos co ltd member	LX MDI co ltd member	LX hausys co ltd member	
Amounts receivable, related party transactions	0	65,870,000	0	0	0	65,870,000
Amounts payable, related party transactions	7,430,585	0	633,664,652	6,938,240	133,645,301	781,678,778
Explanation of details of guarantees given or received of outstanding balances for related party transaction						연결실체가 특수관계자를 위하여 제공하거나 특수관계자로부터 제공받고 있는 담보 및 보증 내역은 없습니다.

Disclosure of financial transactions between related parties

Current Fiscal Year (Quarter)

(Unit : KRW)

	Entity's total for related parties		Total of Entity's total for related parties
	Related parties		
	Associates and Joint ventures where entity is venture	Entities with joint control or significant influence over entity	
	TelechipsInc Member	LX holdings member	
Dividends Received, related party transactions	90,900,000	0	90,900,000

Dividends Paid, related party transactions	0	12,913,257,600	12,913,257,600
--	---	----------------	----------------

Quarter (or Half-Year) of Last Fiscal Year

(Unit : KRW)

	Entity's total for related parties		Total of Entity's total for related parties
	Related parties		
	Associates and Joint ventures where entity is venture	Entities with joint control or significant influence over entity	
	TelechipsInc Member	LX holdings member	
Dividends Received, related party transactions	303,000,000	0	303,000,000
Dividends Paid, related party transactions	0	9,684,943,200	9,684,943,200

Disclosure of compensation for key management personnel

Current Fiscal Year (Quarter)

(Unit : KRW)

	Carrying amount	
	Disclosed Amount	
	Three months	Cumulative
Key management personnel compensation, short-term employee benefits	3,064,718,014	9,454,214,425
Key management personnel compensation, post-employment benefits	403,126,430	1,147,726,857
Key management personnel compensation	3,467,844,444	10,601,941,282
Description of nature of related party relationship		연결실체의 주요 경영진에는 회사 활동의 계획·운영·통제에 대한 중요한 권한과 책임을 가진 이사가 포함되어 있습니다.

Quarter (or Half-Year) of Last Fiscal Year

(Unit : KRW)

	Carrying amount	
	Disclosed Amount	
	Three months	Cumulative





Short-term deposits, not classified as cash equivalents	320,000,000,000	160,000,000,000
Trade current receivables	356,036,532,202	448,798,746,663
Other current receivables	4,707,757,575	5,261,961,225
Other current assets	67,142,760,081	58,641,386,730
Other current financial assets	17,021,085	0
Current inventories	251,546,108,232	211,439,816,577
Non-current assets	339,001,519,992	369,576,289,579
Other non current receivables	7,822,385,588	8,655,836,755
Investments in subsidiaries reported in separate financial statements	4,249,012,045	4,249,012,045
Investments accounted for using equity method	43,702,873,000	43,702,873,000
Property, plant and equipment	108,034,065,584	109,519,932,189
Right-of-use assets	34,127,407,842	34,242,212,908
Intangible assets and goodwill	82,122,184,946	83,524,035,092
Other non-current assets	27,977,302,402	52,558,047,520
Other non-current financial assets	6,000,000,000	0
Non current net defined benefit asset	0	5,795,123,835
Net deferred tax assets	24,966,288,585	27,329,216,235
Assets	1,446,462,787,216	1,485,185,935,453
Liabilities		
Current liabilities	305,912,486,351	350,524,254,936
Current trade payables	162,100,890,250	153,443,980,008
Other current payables	97,890,477,476	103,205,067,769
Other current liabilities	21,450,039,771	50,866,220,497
Other current financial liabilities	1,709,627,852	13,642,987,958
Current lease liabilities	7,748,686,758	8,132,128,607
Current tax liabilities	15,012,764,244	21,233,870,097
Non-current liabilities	48,201,235,785	66,786,544,161
Other non current payables	12,707,065,383	34,505,887,888
Other non-current liabilities	6,423,527,428	6,423,283,638
Non current lease liabilities	26,939,935,820	25,857,372,635
Non-current net defined benefit liability	2,130,707,154	0
Total liabilities	354,113,722,136	417,310,799,097
Equity		

Issued capital	8,132,150,000	8,132,150,000
Capital surplus	76,343,170,500	76,343,170,500
Accumulated other comprehensive income	(380,807,731)	(380,807,731)
Retained earnings	1,008,254,552,311	983,780,623,587
Total equity	1,092,349,065,080	1,067,875,136,356
Equity and liabilities	1,446,462,787,216	1,485,185,935,453

## 4-2. Income Statement

### Income Statement

FY 2025 3 Quarterly From 01/01/2025 To 09/30/2025

FY 2024 3 Quarterly From 01/01/2024 To 09/30/2024

(Unit : KRW)

	CFY 3Q		PFY 3Q	
	THREE MONTH	Cumulative	THREE MONTH	Cumulative
Revenue	394,391,131,472	1,249,238,954,809	419,850,482,315	1,363,055,491,368
Cost of sales	273,980,181,038	851,279,941,304	280,552,563,187	913,419,308,856
Gross profit	120,410,950,434	397,959,013,505	139,297,919,128	449,636,182,512
Selling general and administrative expense	107,236,176,598	316,434,830,906	105,770,732,327	315,130,970,445
Operating income(loss)	13,174,773,836	81,524,182,599	33,527,186,801	134,505,212,067
Finance income	1,782,327,975	21,207,996,293	7,241,933,672	16,641,969,000
Finance costs	3,407,308,572	11,074,198,457	2,294,177,440	15,551,079,571
Non-operating Income	1,275,320,453	19,811,848,164	2,888,077,755	17,366,427,916
Non-operating expense	(171,689,923)	30,300,463,491	8,100,072,394	15,974,941,363
Profit (loss) before tax	12,996,803,615	81,169,365,108	33,262,948,394	136,987,588,049
Tax expense (income)	3,412,583,664	17,665,031,781	6,788,656,575	29,059,121,289
Profit (loss)	9,584,219,951	63,504,333,327	26,474,291,819	107,928,466,760
Earnings per share				
Basic earnings (loss) per share (Unit : KRW)	589	3,905	1,628	6,636
Diluted earnings (loss) per share (Unit : KRW)	589	3,905	1,628	6,636

## 4-3. Statement Of Comprehensive Income

### Statement Of Comprehensive Income

FY 2025 3 Quarterly From 01/01/2025 To 09/30/2025

FY 2024 3 Quarterly From 01/01/2024 To 09/30/2024

(Unit : KRW)

	CFY 3Q		PFY 3Q	
	THREE MONTH	Cumulative	THREE MONTH	Cumulative

Profit (loss)	9,584,219,951	63,504,333,327	26,474,291,819	107,928,466,760
Other comprehensive income	(3,487,100)	3,915,397	(85,319,919)	(201,174,054)
Other comprehensive income that will not be reclassified to profit or loss, net of tax	(3,487,100)	3,915,397	(85,319,919)	(201,174,054)
Other comprehensive income, net of tax, gains (losses) on remeasurements of defined benefit plans	(3,487,100)	3,915,397	(85,319,919)	(201,174,054)
Comprehensive income	9,580,732,851	63,508,248,724	26,388,971,900	107,727,292,706

#### 4-4. Statement Of Changes In Equity Statement Of Changes In Equity

FY 2025 3 Quarterly From 01/01/2025 To 09/30/2025

FY 2024 3 Quarterly From 01/01/2024 To 09/30/2024

(Unit : KRW)

	Equity				
	Issued capital	Capital surplus	Accumulated other comprehensive income	Retained earnings	Total of Equity
2024.01.01 (Equity at beginning of period)	8,132,150,000	76,343,170,500	(380,807,731)	883,522,877,875	967,617,390,644
Profit (loss)	0	0	0	107,928,466,760	107,928,466,760
Other comprehensive income, net of tax, gains (losses) on remeasurements of defined benefit plans	0	0	0	(201,174,054)	(201,174,054)
Dividends recognised as distributions to owners	0	0	0	(29,275,740,000)	(29,275,740,000)
2024.09.30 (Equity at end of period)	8,132,150,000	76,343,170,500	(380,807,731)	961,974,430,581	1,046,068,943,350
2025.01.01 (Equity at beginning of period)	8,132,150,000	76,343,170,500	(380,807,731)	983,780,623,587	1,067,875,136,356
Profit (loss)	0	0	0	63,504,333,327	63,504,333,327
Other comprehensive income, net of tax, gains (losses) on remeasurements of defined benefit plans	0	0	0	3,915,397	3,915,397
Dividends recognised as distributions to owners	0	0	0	(39,034,320,000)	(39,034,320,000)
2025.09.30 (Equity at end of period)	8,132,150,000	76,343,170,500	(380,807,731)	1,008,254,552,311	1,092,349,065,080

## 4-5. Statement Of CashFlows

### Statement Of CashFlows

FY 2025 3 Quarterly From 01/01/2025 To 09/30/2025

FY 2024 3 Quarterly From 01/01/2024 To 09/30/2024

(Unit : KRW)

	FY 2025	FY 2024
Cash flows from (used in) operating activities	106,044,142,972	195,041,550,728
Cash flows from (used in) operations	118,430,749,741	217,407,820,084
Profit (loss)	63,504,333,327	107,928,466,760
Adjustments to reconcile profit (loss)	43,559,665,130	52,505,996,957
Adjustments for assets and liabilities of operating activities	11,366,751,284	56,973,356,367
Interest received, classified as operating activities	9,985,173,468	13,505,617,134
Interest paid, classified as operating activities	(938,294,106)	(573,014,660)
Dividends received, classified as operating activities	90,900,000	303,000,000
Income taxes paid (refund), classified as operating activities	(21,524,386,131)	(35,601,871,830)
Cash flows from (used in) investing activities	(184,988,076,508)	(91,927,282,504)
Purchase of short term Financial Instruments	(310,000,000,000)	(580,000,000,000)
Proceeds from sales of short term Financial Instruments	150,000,000,000	520,000,000,000
Purchase of other receivables	(30,000,000)	(1,658,891,688)
Proceeds from sales of other receivables	1,066,794,252	4,109,597,040
Purchase of property, plant and equipment	(12,558,609,903)	(17,547,439,952)
Proceeds from sales of property, plant and equipment	493,500,000	16,136,000
Purchase of intangible assets	(7,959,760,857)	(16,129,793,904)
Purchase of other financial assets	(6,000,000,000)	0
Purchase of investments in subsidiaries	0	(716,890,000)
Cash flows from (used in) financing activities	(44,551,944,345)	(34,671,668,977)
Dividends paid, classified as financing activities	(39,034,211,466)	(29,275,659,685)
Payments of lease liabilities, classified as financing activities	(5,517,732,879)	(5,396,009,292)
Increase (decrease) in cash and cash equivalents before effect of exchange rate changes	(123,495,877,881)	68,442,599,247
Cash and cash equivalents at beginning of period	231,467,734,679	180,939,531,955
Effect of exchange rate changes on cash and cash equivalents	39,231,251	(61,637,400)

Cash and cash equivalents at end of period	108,011,088,049	249,320,493,802
--	-----------------	-----------------

## 5. Notes to the separate financial statements

### 1. Company overview

주식회사 LX세미콘(이하 "당사")은 FPD(Flat Panel Display) 반도체 IC 설계 및 제조를 목적으로 1999년 11월 11일에 설립되었으며 대전광역시 유성구 테크노2로 222에 소재하고 있습니다. 당사는 2001년 10월 19일에 한국산업기술진흥회로부터 기술개발촉진법 제16조 및 동법 시행령 제15조 제1항에 의해 기업부설연구소 인증서를 받았으며 2011년 10월 23일에 대덕연구개발특구 등의 육성에 관한 특별법 제9조 제1항의 규정에 의해 첨단기술기업으로 지정되었습니다.

당사는 2010년 6월 8일에 주식을 코스닥시장에 상장한 이후, 2021년 7월 1일 회사명을 주식회사 실리콘웍스에서 주식회사 LX세미콘으로 변경하였으며, 2022년 11월 3일자로 코스닥시장에서 상장 폐지하고 유가증권시장으로 이전상장하였습니다. 당분기말 현재 당사의 자본금은 8,132,150천원(발행주식수 16,264,300주, 수권주식수 50,000,000주)입니다.

당분기말 현재 당사의 주주현황은 다음과 같습니다.

(단위: 주)			
주주명	소유 주식수	지분율	비고
(주)LX홀딩스	5,380,524	33.08%	최대주주
기타	10,883,776	66.92%	-
합 계	16,264,300	100%	

### 2. Accounting policies, changes in accounting estimates and errors

#### (1) 분기재무제표 작성기준

동 재무제표는 연차재무제표가 속하는 기간의 일부에 대하여 기업회계기준서 제1034호 '중간재무보고'를 적용하여 작성하는 요약중간재무제표이며, 기업회계기준서 제1027호 '별도재무제표'에 따른 별도재무제표입니다. 동 요약중간재무제표에 대한 이해를 위해서는 한국채택국제회계기준에 따라 작성된 2024년 12월 31일자로 종료하는 회계연도에 대한 연차별도재무제표를 함께 이용하여야 합니다.

중간재무제표의 작성에 적용된 중요한 회계정책은 아래에서 설명하는 기준서나 해석서의 도입과 관련된 영향 및 아래 3)에 기재된 내용을 제외하고는 2024년 12월 31일로 종료하는 회계연도에 대한 연차재무제표 작성시 채택한 회계정책과 동일합니다.

1) 당분기부터 새로 도입된 기준서 및 해석서와 그로 인한 회계정책 변경의 내용은 다음과 같습니다.

- 기업회계기준서 제1021호 '환율변동효과'와 기업회계기준서 제1101호 '한국채택국제회계기준의 최초채택' 개정 - 교환가능성 결여

통화의 교환가능성을 평가하고 다른 통화와 교환이 가능하지 않다면 현물환율을 추정하며 관련 정보를 공시하도록 하고 있습니다. 해당 기준서의 개정이 재무제표에 미치는 중요한 영향은 없습니다.

2) 제정·공표되었으나 아직 시행일이 도래하지 않아 적용하지 아니한 한국채택국제회계기준은 다음과 같습니다.

- 기업회계기준서 제1109호 '금융상품', 제1107호 '금융상품: 공시' 개정

실무에서 제기된 의문에 대응하고 새로운 요구사항을 포함하기 위해 기업회계기준서제1109호 '금융상품'과 제1107호 '금융상품: 공시'가 개정되었습니다. 동 개정사항은 2026년 1월 1일 이후 시작하는 회계연도부터 적용되며, 조기적용이 허용됩니다. 주요 개정내용은 다음과 같습니다. 당사는 동 개정으로 인한 재무제표의 영향을 검토중에 있습니다.

- 특정 기준을 충족하는 경우, 결제일 전에 전자지급시스템을 통해 금융부채가 결제된 것으로(제거된 것으로) 간주할 수 있도록 허용
- 금융자산이 원리금 지급만으로 구성되어 있는지의 기준을 충족하는지 평가하기 위한 추가 지침을 명확히 하고 추가함.
- 계약상 현금흐름의 시기나 금액을 변경시키는 계약조건이 기업에 미치는 영향과 기업이 노출되는 정도를 금융상품의 각 종류별로 공시
- FVOCI 지정 지분상품에 대한 추가 공시

- 한국채택국제회계기준 연차개선 Volume 11

한국채택국제회계기준 연차개선Volume 11은 2026년 1월 1일 이후 시작하는 회계연도부터 적용되며, 조기적용이 허용됩니다. 당사는 동 개정으로 인한 재무제표의 영향을 검토 중에 있습니다.

- 기업회계기준서 제1101호 '한국채택국제회계기준의 최초채택': K-IFRS 최초 채택시 위험회피회계 적용
- 기업회계기준서 제1107호 '금융상품:공시': 제거 손익, 실무적용지침
- 기업회계기준서 제1109호 '금융상품': 리스부채의 제거 회계처리와 거래가격의 정의
- 기업회계기준서 제1110호 '연결재무제표': 사실상의 대리인 결정
- 기업회계기준서 제1007호 '현금흐름표': 원가법

3) 법인세비용 : 중간기간의 법인세비용은 전체 회계연도에 대해서 예상되는 최선의 가중평균연간법인세율, 즉 추정평균연간유효법인세율을 중간기간의 세전이익에 적용하여 계산합니다.

당사의 직전연도 전체 회계기간을 기준으로 한 연결매출액은 필라2 법인세의 매출액요건을 충족하고 있으나, 당사는 필라2 적용제외조건에 해당됩니다. 따라서 필라2가당사의 법인세에 미치는 영향은 없으며, 이와 관련하여 당분기에 인식한 당기법인세는 없습니다.

### 3. Significant judgements and sources of estimation uncertainty

중간재무제표를 작성함에 있어 경영진은 재무제표에 인식되는 금액에 유의적인 영향을 미치는 판단을 하여야 하며(추정과 관련된 사항은 제외), 다른 자료로부터 쉽게 식별할 수 없는 자산과 부채의 장부금액에 대한 추정 및 가정을 하여야 합니다. 추정치와 관련 가정은 과거 경험 및 관련이 있다고 여겨지는 기타 요인에 근거합니다. 또한 실제 결과는 이러한 추정치들과 다를 수도 있습니다.

중간재무제표 작성을 위해 당사의 회계정책의 적용과정에서 내린 중요한 판단과 추정불확실성의 주요원천에 대한 내용은 법인세비용을 결정하는데 사용된 추정의 방법을 제외하고는 2024년 12월 31일로 종료하는 회계연도에 대한 연차재무제표와 동일합니다.

## 4-1. Financial instruments





Financial liabilities, at fair value									13,642,987,958		13,642,987,958							
Description of reasons for exclusion from fair value disclosure	공정부채에 포함되지 않는 증권관련 채무 중은 제외되어 있습니다. 공정이므로 공정가치 측정방법의 종래적인 공시에서 제외되었습니다.	공정부채에 포함되지 않는 증권관련 채무 중은 제외되어 있습니다. 공정이므로 공정가치 측정방법의 종래적인 공시에서 제외되었습니다.																리스부채는 기업회계기준서 제1107호 '금융상품-공시'에 따라 공정가치 공시에서 제외하였습니다.

Gains Losses Financial Instruments By Category

Current Fiscal Year (Quarter)

(Unit : KRW)

	Assets and liabilities						Total of Assets and liabilities
	Financial assets, category		Financial liabilities, category			Derivatives	
	Financial assets measured at fair value through other comprehensive income, category	Financial assets at amortised cost, category	Financial liabilities at amortised cost, category	Lease liabilities			
Interest income (expense)	0	11,327,594,260	(1,463,367,304)	(938,294,106)	0	8,925,932,850	
Other finance income (cost)	(18,995,835,228)	(890,172,364)	4,304,013,321	0	7,220,714,017	(8,361,280,254)	
Description of other finance income (cost)						기타손익은 기타포괄손익-공정가치측정금융자산, 상각후원가측정금융자산과 상각후원가측정금융부채, 위험회피목적파생상품에서 발생하는 매출채권처분손실, 외화환산손익, 외환차손익 등으로 구성되어 있습니다.	

Quarter (or Half-Year) of Last Fiscal Year

(Unit : KRW)

	Assets and liabilities						Total of Assets and liabilities
	Financial assets, category		Financial liabilities, category			Derivatives	
	Financial assets measured at fair value through other comprehensive income, category	Financial assets at amortised cost, category	Financial liabilities at amortised cost, category	Lease liabilities			
Interest income	0	13,514,536,050	(532,613,908)	(573,014,660)	0	12,408,907,482	

(expense)						
Other finance income (cost)	(22,139,562,296)	8,676,928,083	1,139,679,257	0	2,387,669,973	(9,935,284,983)
Description of other finance income (cost)						기타손익은 기타포괄손익-공정가치측정금융자산, 상각후원가측정금융자산과 상각후원가측정금융부채, 위험회피목적파생상품에서 발생하는 매출채권처분손실, 외화환산손익, 외환차손익 등으로 구성되어 있습니다.

#### 4-2. Financial instruments - Fair value measurement

##### Disclosure Of Level Of FairValue Hierarchy Within Which FairValueMeasurement Is Categorised

	Level 1 of fair value hierarchy	Level 2 of fair value hierarchy	Level 3 of fair value hierarchy
Description of level of fair value hierarchy within which fair value measurement is categorised	측정일에 동일한 자산이나 부채에 대해 접근할 수 있는 활성시장의 (조정하지 않은) 공시가격으로, 해당 공시가격에는 금리 상승 및 인플레이션, ESG관련 위험 등의 경제환경 변화에 대한 시장의 가정이 반영되어 있음. (수준 1)	수준 1의 공시가격 외에 자산이나 부채에 대해 직접적으로나 간접적으로 관측할 수 있는 투입변수 (수준 2)	비상장 지분증권과 ESG관련 위험으로 인해 유의적인 관측불가능한 조정이 반영되는 금융상품과 같이, 자산이나 부채에 대한 관측할 수 없는 투입변수 (수준 3)

##### Disclosure of fair value measurement of assets

(Unit : KRW)

Aggregated measurement								
At fair value								
Financial assets, category								
Derivative assets				Financial assets at fair value through profit or loss, category				
All levels of fair value hierarchy				Total of All levels of fair value hierarchy	All levels of fair value hierarchy			Total of All levels of fair value hierarchy
Level 1 of fair value hierarchy	Level 2 of fair value hierarchy	Level 3 of fair value hierarchy	Level 1 of fair value hierarchy		Level 2 of fair value hierarchy	Level 3 of fair value hierarchy		
Financial assets	0	17,021,085	0	17,021,085	0	0	6,000,000,000	6,000,000,000
Statement that there were no transfers between Level 1, Level 2 or Level 3 of fair value hierarchy, assets				당분기 중 반복적인 공정가치 측정치의 서열 체계 수준 간 대체는 없습니다.				당분기 중 반복적인 공정가치 측정치의 서열 체계 수준 간 대체는 없습니다.

Description of valuation techniques used in fair value measurement, assets		현금흐름 할인모형					현금흐름 할인모형	
Description of inputs used in fair value measurement, assets		할인율 및 환율					할인율	

Disclosure of fair value measurement of liabilities

Ending of Current Fiscal Year (Quarter)

(Unit : KRW)

	Aggregated measurement			
	At fair value			
	Financial liabilities, category			
	Derivative financial liabilities			
	All levels of fair value hierarchy			Total of All levels of fair value hierarchy
	Level 1 of fair value hierarchy	Level 2 of fair value hierarchy	Level 3 of fair value hierarchy	
Financial liabilities	0	1,709,627,852	0	1,709,627,852
Statement that there were no transfers between Level 1, Level 2 or Level 3 of fair value hierarchy, liabilities				당분기 중 반복적인 공정가치 측정치의 서열 체계 수준 간 대체는 없습니다.
Description of valuation techniques used in fair value measurement, liabilities		현금흐름 할인모형		
Description of inputs used in fair value measurement, liabilities		할인율 및 환율		

Ending of Last Fiscal Year

(Unit : KRW)

	Aggregated measurement			
	At fair value			
	Financial liabilities, category			
	Derivative financial liabilities			
	All levels of fair value hierarchy			Total of All levels of fair value hierarchy
	Level 1 of fair value hierarchy	Level 2 of fair value hierarchy	Level 3 of fair value hierarchy	
Financial liabilities	0	13,642,987,958	0	13,642,987,958

Statement that there were no transfers between Level 1, Level 2 or Level 3 of fair value hierarchy, liabilities				
Description of valuation techniques used in fair value measurement, liabilities		현금흐름 할인모형		
Description of inputs used in fair value measurement, liabilities		할인율 및 환율		

### 4-3. Financial instruments - Derivatives

Disclosure of detailed information about hedging instruments

Ending of Current Fiscal Year  
(Quarter)

(Unit : KRW)

	Hedges		
	Fair value hedges		
	Risks		
	Currency risk		
	Derivatives type		
	Forward contract		
	Counterparties		
	Shinhan bank and another		
	Ranges		Total of Ranges
	Bottom of range	Top of range	
Nominal amount of hedging instrumentUSD			80
Contract exchange rate	1,341.81	1,404.00	
Description of line item in statement of financial position that includes hedging instrument			기타금융자산/부채
Risk hedging start date	2025-05-13	2025-09-26	
Risk hedging maturity date	2025-10-13	2026-01-07	
Hedging instrument, assets			17,021,085
Hedging instrument, liabilities			1,709,627,852

Ending of Last Fiscal Year

(Unit : KRW)

	Hedges		
	Fair value hedges		
	Risks		
	Currency risk		
	Derivatives type		
	Forward contract		
	Counterparties		
	Shinhan bank and another		
	Ranges		Total of Ranges
	Bottom of range	Top of range	
Nominal amount of hedging instrumentUSD			138
Contract exchange rate	1,298.70	1,456.75	
Description of line item in statement of financial position that includes hedging instrument			기타금융자산/부채
Risk hedging start date	2024-09-11	2024-12-26	
Risk hedging maturity date	2025-01-06	2025-04-07	
Hedging instrument, assets			0
Hedging instrument, liabilities			13,642,987,958

Disclosure of detailed information about hedged items

Ending of Current Fiscal Year (Quarter)

(Unit : KRW)

	Hedges	
	Fair value hedges	
	Risks	
	Currency risk	
	Derivatives type	
	Forward contract	
Hedged item, assets		111,747,277,729
Description of line item in statement of financial position that includes hedged item	매출채권	
Gain (loss) on change in fair value of hedged item used as basis for recognising hedge ineffectiveness		1,692,606,767

Ending of Last Fiscal Year

(Unit : KRW)

	Hedges
--	--------

	Fair value hedges
	Risks
	Currency risk
	Derivatives type
	Forward contract
Hedged item, assets	202,807,648,817
Description of line item in statement of financial position that includes hedged item	매출채권
Gain (loss) on change in fair value of hedged item used as basis for recognising hedge ineffectiveness	13,642,987,958

Disclosure of information about amounts that affected statement of comprehensive income as result of hedge accounting

Ending of Current Fiscal Year (Quarter)

(Unit : KRW)

	Hedges
	Fair value hedges
	Risks
	Currency risk
	Derivatives type
	Forward contract
Gain (loss) on change in fair value of hedging instrument used as basis for recognising hedge ineffectiveness	(1,692,606,767)
Description of line item in statement of comprehensive income that includes recognised hedge ineffectiveness	파생상품평가이익/손실
Gain (loss) on hedge ineffectiveness recognised in profit or loss	0

Ending of Last Fiscal Year

(Unit : KRW)

	Hedges
	Fair value hedges
	Risks
	Currency risk
	Derivatives type
	Forward contract
Gain (loss) on change in fair value of hedging instrument used as basis for recognising hedge ineffectiveness	(13,642,987,958)

Description of line item in statement of comprehensive income that includes recognised hedge ineffectiveness	파생상품평가이익/손실
Gain (loss) on hedge ineffectiveness recognised in profit or loss	0

Disclosure of transfers of financial assets

	Disclosed Amount
Description of transfers of financial assets	당사는 수출입은행 등과의 매출채권 팩토링 계약에 따라 매출채권을 양도하였습니다. 이 거래는 해당 매출채권이 만기에 회수되지 않는 경우 당사가 은행 등에 그 회수되지 않은 매출채권 금액을 지급할 의무를 부담하고 있지 않습니다. 당사가 당분기말 현재 매출채권 팩토링으로 양도하였으나 양도 금융자산의 전부 또는 일부가 제거 조건을 충족하지 못하여 담보부 차입으로 회계처리한 매출채권의 장부금액은 없습니다.

5. Cash and cash equivalents

Details Of Cash And Cash Equivalents

Ending of Current Fiscal Year (Quarter) (Unit : KRW)

	Disclosed Amount
Balances with banks	5,774,825,903
Short-term investments, classified as cash equivalents	102,236,262,146
Cash and cash equivalents	108,011,088,049

Ending of Last Fiscal Year (Unit : KRW)

	Disclosed Amount
Balances with banks	10,967,734,679
Short-term investments, classified as cash equivalents	220,500,000,000
Cash and cash equivalents	231,467,734,679

6. Short-term deposits

Disclosure of short-term deposits, not classified as cash equivalents\_con

Ending of Current Fiscal Year (Quarter) (Unit : KRW)

	Financial assets, class
--	-------------------------

	Financial assets at amortised cost, class
	Deposits at amortised cost
	Term deposits
Short-term deposits, not classified as cash equivalents	320,000,000,000

Ending of Last Fiscal Year

(Unit : KRW)

	Financial assets, class
	Financial assets at amortised cost, class
	Deposits at amortised cost
	Term deposits
Short-term deposits, not classified as cash equivalents	160,000,000,000

## 7. Trade and other receivables

Trade And Other Receivables

Ending of Current Fiscal Year (Quarter)

(Unit : KRW)

		Disclosed Amount
Trade and other current receivables		360,744,289,777
Trade and other current receivables	Current trade receivables	356,036,532,202
	Short-term other receivables, net	478,095,319
	Current accrued income other than current contract assets	3,396,179,547
	Short-term loans, net	833,482,709
	Short-term deposits provided	0
Trade and other non-current receivables		7,822,385,588
Trade and other non-current receivables	Non-current trade receivables	0
	Long-term other receivables	0
	Long-term loans, net	1,461,480,038
	Long-term deposits provided, net	6,360,905,550

Ending of Last Fiscal Year

(Unit : KRW)

		Disclosed Amount
Trade and other current receivables		454,060,707,888
Trade and other current receivables	Current trade receivables	448,798,746,663
	Short-term other receivables, net	2,168,747,776
	Current accrued income other than current contract assets	2,053,758,755

	Short-term loans, net	1,039,454,694
	Short-term deposits provided	0
Trade and other non-current receivables		8,655,836,755
Trade and other non-current receivables	Non-current trade receivables	0
	Long-term other receivables	0
	Long-term loans, net	2,182,302,305
	Long-term deposits provided, net	6,473,534,450

## 8. Other financial assets and other current financial liabilities

### Disclosure of Other financial assets

Ending of Current Fiscal Year (Quarter)

(Unit : KRW)

	Financial assets, class	
	Financial assets at fair value, class	
	Derivatives	Equity investments
Other current financial assets	17,021,085	0
Other non-current financial assets	0	6,000,000,000

Ending of Last Fiscal Year

(Unit : KRW)

	Financial assets, class	
	Financial assets at fair value, class	
	Derivatives	Equity investments
Other current financial assets	0	0
Other non-current financial assets	0	0

### Disclosure of other current financial liabilities

Ending of Current Fiscal Year (Quarter)

(Unit : KRW)

	Financial liabilities, class
	Financial liabilities at fair value, class
	Derivatives
Other current financial liabilities	1,709,627,852

Ending of Last Fiscal Year

(Unit : KRW)

	Financial liabilities, class
	Financial liabilities at fair value, class
	Derivatives

Other current financial liabilities	13,642,987,958
-------------------------------------	----------------

## 9. Other assets

### Disclosure Of Other Assets

Ending of Current Fiscal Year (Quarter)

(Unit : KRW)

		Disclosed Amount
Other current assets		67,142,760,081
Other current assets	Current advances to suppliers	5,991,835,842
	Current prepaid expenses	61,150,924,239
Other non-current assets		27,977,302,402
Other non-current assets	Non-current prepayments	1,928,981,016
	Long-term prepaid expenses, net	26,048,321,386

Ending of Last Fiscal Year

(Unit : KRW)

		Disclosed Amount
Other current assets		58,641,386,730
Other current assets	Current advances to suppliers	5,383,048,147
	Current prepaid expenses	53,258,338,583
Other non-current assets		52,558,047,520
Other non-current assets	Non-current prepayments	4,169,868,654
	Long-term prepaid expenses, net	48,388,178,866

## 10. Inventories

### Details of inventories

Ending of Current Fiscal Year (Quarter)

(Unit : KRW)

	Gross carrying amount	Allowance For Inventory Valuation	Total of Carrying amount
Current finished goods	113,572,328,839	(11,694,926,549)	101,877,402,290
Current work in progress	182,043,862,434	(32,449,059,854)	149,594,802,580
Current merchandise	21,168,050	(21,168,050)	0
Provisions for returns	73,903,362	0	73,903,362
Toal current inventories	295,711,262,685	(44,165,154,453)	251,546,108,232

Ending of Last Fiscal Year

(Unit : KRW)

	Gross carrying amount	Allowance For Inventory Valuation	Total of Carrying amount
Current finished goods	82,031,918,754	(13,069,018,944)	68,962,899,810

Current work in progress	184,855,124,846	(42,485,832,758)	142,369,292,088
Current merchandise	21,168,050	(21,168,050)	0
Provisions for returns	107,624,679	0	107,624,679
Toal current inventories	267,015,836,329	(55,576,019,752)	211,439,816,577

The Amount Of Inventories Recognized As Cost Of Sales And Inventory WriteDowns Included In Cost Of Sales And Usage Of Inventory WriteDowns

Current Fiscal Year (Quarter) (Unit : KRW)

	Cost of sales
Write-downs (reversals of write-downs) of inventories	(11,410,865,299)
Writeoffs of inventories	12,628,337,336
Cost of inventories recognised as expense during period	864,553,000,980

Quarter (or Half-Year) of Last Fiscal Year (Unit : KRW)

	Cost of sales
Write-downs (reversals of write-downs) of inventories	(4,592,579,911)
Writeoffs of inventories	5,101,290,439
Cost of inventories recognised as expense during period	918,305,381,582

## 11. Interests in other entities

(1) 당분기말과 전기말 현재 종속기업투자주식의 내역은 다음과 같습니다.

회사명	소재지	주요 영업활동	결산월	(단위: 원)			
				당분기말		전기말	
				지분율(%)	장부금액	지분율(%)	장부금액
LX Semicon U.S.A., Inc	미국	반도체제조설 계	12월	100	137,322,045	100	137,322,045
LX Semicon China Co., Ltd.	중국	반도체제조설 계	12월	100	2,179,314,000	100	2,179,314,000
LX Semicon Japan Co., Ltd.	일본	반도체제조설 계	12월	100	1,215,486,000	100	1,215,486,000
LX Semicon Taiwan Co., Ltd.	대만	반도체제조설 계	12월	100	716,890,000	100	716,890,000
합 계					4,249,012,045		4,249,012,045

(2) 당분기말과 전기말 현재 관계기업 및 공동기업투자 내역은 다음과 같습니다.

(단위: 원)

회사명	소재지	주요 영업활동	결산월	당분기말		전기말	
				지분율(%)	장부금액	지분율(%)	장부금액
어드밴스드파워디바이스 테크놀로지 주식회사	한국	반도체소자의 연구개발 및 설계	3월	49.00	4,410,000,000	49.00	4,410,000,000
FJ Composite Materials Co.,Ltd	일본	복합재료의 개발, 제조, 판매업	5월	28.70	9,722,823,000	28.70	9,722,823,000
㈜텔레칩스(*)	한국	전자집적회로 제조업	12월	10.26	26,770,050,000	10.26	26,770,050,000
엘엑스벤처스신기술사업투 자조합 1호	한국	벤처기업에 대한 투자	12월	23.33	2,800,000,000	23.33	2,800,000,000
합 계					43,702,873,000		43,702,873,000

(\*) (주)텔레칩스의 지분율은 유효지분율이며 보유한 지분율이 20%미만이지만, 이사를 임명할 수 있는 계약적 권리에 의하여 유의적 영향력을 행사하고 있습니다.

(3) 당분기 및 전분기 중 종속기업, 관계기업 및 공동기업의 변동내역은 다음과 같습니다.

(단위: 원)		
구분	당분기	전분기
기초	47,951,885,045	47,234,995,045
취득	-	716,890,000
기말	47,951,885,045	47,951,885,045

## 12. Property, plant and equipment

Disclosure of detailed information about property, plant and equipment

Current Fiscal Year (Quarter)

(Unit : KRW)

		Disclosed Amount
Reconciliation of changes in property, plant and equipment [abstract]		
Reconciliation of changes in property, plant and equipment [abstract]	Property, plant and equipment at beginning of period	109,519,932,189
	Additions other than through business combinations, property, plant and equipment	10,500,974,629
	Disposals, property, plant and equipment	(613,274,670)
	Depreciation, property, plant and equipment	(11,014,453,447)
	Increase (decrease) through other changes, property, plant and equipment	(359,113,117)

	Property, plant and equipment at end of period	108,034,065,584
--	--	-----------------

Quarter (or Half-Year) of Last Fiscal Year

(Unit : KRW)

		Disclosed Amount
Reconciliation of changes in property, plant and equipment [abstract]		
Reconciliation of changes in property, plant and equipment [abstract]	Property, plant and equipment at beginning of period	103,185,474,956
	Additions other than through business combinations, property, plant and equipment	15,341,446,845
	Disposals, property, plant and equipment	(162,924,423)
	Depreciation, property, plant and equipment	(10,172,345,040)
	Increase (decrease) through other changes, property, plant and equipment	(39,936,643)
	Property, plant and equipment at end of period	108,151,715,695

### 13. Intangible assets

Disclosure of reconciliation of changes in intangible assets and goodwill

Current Fiscal Year (Quarter)

(Unit : KRW)

		Disclosed Amount
Reconciliation of changes in intangible assets and goodwill [abstract]		
Reconciliation of changes in intangible assets and goodwill [abstract]	Intangible assets and goodwill at beginning of period	83,524,035,092
	Additions other than through business combinations, intangible assets other than goodwill	6,553,997,601
	Disposals, intangible assets and goodwill	(2,575,879)
	Amortisation, intangible assets other than goodwill	(7,953,271,868)
	Intangible assets and goodwill	82,122,184,946

	at end of period	
--	------------------	--

Quarter (or Half-Year) of Last Fiscal Year

(Unit : KRW)

		Disclosed Amount
Reconciliation of changes in intangible assets and goodwill [abstract]		
Reconciliation of changes in intangible assets and goodwill [abstract]	Intangible assets and goodwill at beginning of period	73,794,815,777
	Additions other than through business combinations, intangible assets other than goodwill	15,506,748,715
	Disposals, intangible assets and goodwill	(124,327,232)
	Amortisation, intangible assets other than goodwill	(6,470,258,892)
	Intangible assets and goodwill at end of period	82,706,978,368

#### 14. Leases

Disclosure of quantitative information about right-of-use assets

Current Fiscal Year (Quarter)

(Unit : KRW)

	Disclosed Amount
Right-of-use assets, at beginning of period	34,242,212,908
Additions to right-of-use assets	9,903,609,036
Decrease due to termination or cancellation of lease contracts, right-of-use assets	(3,597,285,786)
Depreciation, right-of-use assets	(6,421,128,316)
Right-of-use assets, at ending of period	34,127,407,842

Quarter (or Half-Year) of Last Fiscal Year

(Unit : KRW)

	Disclosed Amount
Right-of-use assets, at beginning of period	19,643,121,217
Additions to right-of-use assets	9,308,394,687
Decrease due to termination or cancellation of lease contracts, right-of-use assets	(318,726,113)
Depreciation, right-of-use assets	(5,772,622,755)
Right-of-use assets, at ending of period	22,860,167,036

Disclosure of expenses recognized in profit or loss and total cash outflows related to leases

Current Fiscal Year (Quarter)

(Unit : KRW)

	Disclosed Amount
Depreciation, right-of-use assets	6,421,128,316
Interest expense on lease liabilities	938,294,106
Expense relating to leases of low-value assets for which recognition exemption has been used	183,874,164
Cash outflow for leases	6,639,901,149

Quarter (or Half-Year) of Last Fiscal Year

(Unit : KRW)

	Disclosed Amount
Depreciation, right-of-use assets	5,772,622,755
Interest expense on lease liabilities	573,014,660
Expense relating to leases of low-value assets for which recognition exemption has been used	144,841,121
Cash outflow for leases	6,113,865,073

## 15. Trade and other payables

Disclosure Of Trade And Other Payables

Ending of Current Fiscal Year (Quarter)

(Unit : KRW)

		Disclosed Amount
Trade and other current payables		259,991,367,726
Trade and other current payables	Current trade payables	162,100,890,250
	Short-term other Payables	52,983,219,908
	Current dividend payables	188,849
	Accruals classified as current	44,907,068,719
	Short-term guarantee deposit withholdings	0
Trade and other non-current payables		12,707,065,383
Trade and other non-current payables	Non-current trade payables	0
	Long-term other payables, net	10,756,833,769
	Accruals classified as non-current	62,355,914
	Long-term guarantee deposit withholdings, net	1,887,875,700

Ending of Last Fiscal Year

(Unit : KRW)

		Disclosed Amount
Trade and other current payables		256,649,047,777
Trade and other current	Current trade payables	153,443,980,008

payables	Short-term other Payables	94,049,257,308
	Current dividend payables	80,315
	Accruals classified as current	9,155,730,146
	Short-term guarantee deposit withholdings	0
Trade and other non-current payables		34,505,887,888
Trade and other non-current payables	Non-current trade payables	0
	Long-term other payables, net	32,632,512,188
	Accruals classified as non-current	0
	Long-term guarantee deposit withholdings, net	1,873,375,700

### 16-1. Other liabilities

#### Disclosure Of Other Liabilities

Ending of Current Fiscal Year (Quarter)

(Unit : KRW)

		Disclosed Amount
Other current liabilities		21,450,039,771
Other current liabilities	Current advances received, representing current contract liabilities for performance obligations satisfied at point in time	9,085,914,169
	Short-term withholdings	1,601,895,881
	Other current provisions	10,762,229,721
Other non-current liabilities		6,423,527,428
Other non-current liabilities	Other non-current provisions	2,749,060,574
	Non-current provisions for employee benefits	3,674,466,854

Ending of Last Fiscal Year

(Unit : KRW)

		Disclosed Amount
Other current liabilities		50,866,220,497
Other current liabilities	Current advances received, representing current contract liabilities for performance obligations satisfied at point in time	11,808,381,167
	Short-term withholdings	5,429,097,595
	Other current provisions	33,628,741,735
Other non-current liabilities		6,423,283,638

Other non-current liabilities	Other non-current provisions	2,964,725,174
	Non-current provisions for employee benefits	3,458,558,464

16-2. Other provisions, contingent liabilities and contingent assets

Disclosure of other provisions

Current Fiscal Year (Quarter)

(Unit : KRW)

	Warranty provision	Refunds provision	Provision for decommissioning, restoration and rehabilitation costs	Miscellaneous other provisions	Total of Other provisions
Other provisions at beginning of period	30,548,478,510	162,580,997	2,964,725,174	2,917,682,228	36,593,466,909
Additional provisions, other provisions	1,220,761,377	0	0	35,728,378	1,256,489,755
Unused provision reversed, other provisions	0	(56,646,457)	(173,767,600)	0	(230,414,057)
Provision used, other provisions	(23,929,614,742)	0	(41,897,000)	(136,740,570)	(24,108,252,312)
Other provisions at end of period	7,839,625,145	105,934,540	2,749,060,574	2,816,670,036	13,511,290,295
Description of nature of obligation, other provisions	당사는 제품판매보증과 관련하여 당사가 부담하게 될 것으로 예상되는 보증비용을 판매보증충당부채로 계상하고, 이에 상당하는 전입액을 판매비와관리비로 인식하고 있습니다.	한편, 당사는 기업회계기준서 제1115호에 따라 반품 시 취소될 수익 부분에 해당하는 금액을 반품충당부채 및 매출차감으로 인식하고 있습니다.			

Quarter (or Half-Year) of Last Fiscal Year

(Unit : KRW)

	Warranty provision	Refunds provision	Provision for decommissioning, restoration and rehabilitation costs	Miscellaneous other provisions	Total of Other provisions
Other provisions at beginning of period	15,286,080,704	190,923,258	2,498,715,452	0	17,975,719,414
Additional provisions, other provisions	2,725,009,929	0	0	236,263,805	2,961,273,734

Unused provision reversed, other provisions	0	(42,199,928)	0	0	(42,199,928)
Provision used, other provisions	(7,987,163,216)	0	0	0	(7,987,163,216)
Other provisions at end of period	10,023,927,417	148,723,330	2,498,715,452	236,263,805	12,907,630,004
Description of nature of obligation, other provisions	<p>당사는 제품판매보증과 관련하여 당사가 부담하게 될 것으로 예상되는 보증비용을 판매보증충당부채로 계상하고, 이에 상당하는 전입액을 판매비와관리비로 인식하고 있습니다.</p> <p>한편, 당사는 기업회계기준서 제1115호에 따라 반품 시 취소될 수익 부분에 해당하는 금액을 반품충당부채 및 매출차감으로 인식하고 있습니다.</p>				

## 17. Share capital, reserves and other equity interest

### Disclosure of classes of share capital

Ending of Current Fiscal Year (Quarter)

(Unit : KRW)

	Ordinary shares
Number of shares authorised	50,000,000
Par value per share	500
Number of shares issued	16,264,300
Issued capital	8,132,150,000

Ending of Last Fiscal Year

(Unit : KRW)

	Ordinary shares
Number of shares authorised	50,000,000
Par value per share	500
Number of shares issued	16,264,300
Issued capital	8,132,150,000

### Disclosure Of Capital Surplus

Ending of Current Fiscal Year (Quarter)

(Unit : KRW)

		Disclosed Amount
Capital surplus		76,343,170,500
Capital surplus	Share premium	66,560,617,129
	Other capital surplus	9,782,553,371

Ending of Last Fiscal Year

(Unit : KRW)

		Disclosed Amount
Capital surplus		76,343,170,500
Capital surplus	Share premium	66,560,617,129
	Other capital surplus	9,782,553,371

## 18. Other Elements Of Stockholder's Equity

Elements Of Other Stockholder's Equity

Ending of Current Fiscal Year (Quarter)

(Unit : KRW)

	Disclosed Amount
Reserve of gains and losses on financial assets measured at fair value through other comprehensive income	(380,807,731)

Ending of Last Fiscal Year

(Unit : KRW)

	Disclosed Amount
Reserve of gains and losses on financial assets measured at fair value through other comprehensive income	(380,807,731)

## 19. Statement of Appropriation of Retained Earnings

Disclosure Of retained earnings details

Ending of Current Fiscal Year (Quarter)

(Unit : KRW)

	Disclosed Amount
Statutory reserve	4,066,075,000
Unappropriated retained earnings	1,004,188,477,311
Retained earnings total	1,008,254,552,311

Ending of Last Fiscal Year

(Unit : KRW)

	Disclosed Amount
Statutory reserve	4,066,075,000
Unappropriated retained earnings	979,714,548,587
Retained earnings total	983,780,623,587

Disclosure of changes retained earnings before appropriation

Current Fiscal Year (Quarter)

(Unit : KRW)

	Equity
	Retained earnings

	Retained earnings before appropriations(accumulated deficit before disposition)
Equity at beginning of period	979,714,548,587
Dividends recognised as distributions to owners	(39,034,320,000)
Profit (loss)	63,504,333,327
Other comprehensive income, net of tax, gains (losses) on remeasurements of defined benefit plans	3,915,397
Equity at end of period	1,004,188,477,311

Quarter (or Half-Year) of Last Fiscal Year

(Unit : KRW)

	Equity
	Retained earnings
	Retained earnings before appropriations(accumulated deficit before disposition)
Equity at beginning of period	879,456,802,875
Dividends recognised as distributions to owners	(29,275,740,000)
Profit (loss)	107,928,466,760
Other comprehensive income, net of tax, gains (losses) on remeasurements of defined benefit plans	(201,174,054)
Equity at end of period	957,908,355,581

## 20. Earnings per share

Earnings per share

Current Fiscal Year (Quarter)

(Unit : KRW)

	Share capital	
	Ordinary shares	
	Three months	Cumulative
Profit (loss), attributable to ordinary equity holders of parent entity, used in calculating basic earnings per share	9,584,219,951	63,504,333,327

Weighted average number of ordinary shares used in calculating basic earnings per share	16,264,300	16,264,300
Basic earnings (loss) per share	589	3,905
Diluted earnings (loss) per share	589	3,905

Quarter (or Half-Year) of Last Fiscal Year

(Unit : KRW)

	Share capital	
	Ordinary shares	
	Three months	Cumulative
Profit (loss), attributable to ordinary equity holders of parent entity, used in calculating basic earnings per share	26,474,291,819	107,928,466,760
Weighted average number of ordinary shares used in calculating basic earnings per share	16,264,300	16,264,300
Basic earnings (loss) per share	1,628	6,636
Diluted earnings (loss) per share	1,628	6,636

Weighted average number of shares used in calculation of basic earnings per share  
Current Fiscal Year (Quarter)

	Share capital	
	Ordinary shares	
	Three months	Cumulative
Number of shares issued		16,264,300
Number of shares in entity held by entity or by its subsidiaries or associates		0
Number of shares outstanding		16,264,300
Weighted number of days	92일/92일	273일/273일
Weighted average number of ordinary shares used in calculating basic earnings per share	16,264,300	16,264,300

Quarter (or Half-Year) of Last  
Fiscal Year

	Share capital	
	Ordinary shares	
	Three months	Cumulative
Number of shares issued		16,264,300
Number of shares in entity held by entity or by its subsidiaries or associates		0
Number of shares outstanding		16,264,300
Weighted number of days	92일/92일	274일/274일
Weighted average number of ordinary shares used in calculating basic earnings per share	16,264,300	16,264,300

## 21. Finance income and expense

Finance Income And Finance Cost

Current Fiscal Year (Quarter)

(Unit : KRW)

		Carrying amount	
		Disclosed Amount	
		Three months	Cumulative
Finance income		1,782,327,975	21,207,996,293
Finance income	Interest income	3,587,286,709	11,327,594,260
	Dividend Income, finance income	80,307,150	171,207,150
	Gains on foreign currency transactions financial income	273,476	248,076,952
	Gains on foreign exchange translations financial income	40,263,643	40,263,643
	Gains on transaction of derivative financial instruments financial income	6,197,170,627	9,403,833,203
	Gains on valuation of derivative financial instruments financial income	(8,122,973,630)	17,021,085
Finance costs		3,407,308,572	11,074,198,457
Finance costs	Interest expense	773,898,176	2,401,661,410
	Losses on foreign currency transactions financial expense	245,658	238,770,075
	Losses on foreign exchange translations financial expense	(603,212,361)	1,032,392

	Losses on disposition of receivables financial expense	1,454,372,583	6,232,594,309
	Losses on transaction of derivative financial instruments financial expense	72,808,538	490,512,419
	Losses on valuation of derivative financial instruments financial expense	1,709,195,978	1,709,627,852

Quarter (or Half-Year) of Last Fiscal Year

(Unit : KRW)

		Carrying amount	
		Disclosed Amount	
		Three months	Cumulative
Finance income		7,241,933,672	16,641,969,000
Finance income	Interest income	4,484,685,160	13,514,536,050
	Dividend Income, finance income	0	303,000,000
	Gains on foreign currency transactions financial income	116,665,017	151,185,176
	Gains on foreign exchange translations financial income	(32,664,279)	0
	Gains on transaction of derivative financial instruments financial income	1,518,551,474	1,518,551,474
	Gains on valuation of derivative financial instruments financial income	1,154,696,300	1,154,696,300
Finance costs		2,294,177,440	15,551,079,571
Finance costs	Interest expense	637,079,180	1,105,628,568
	Losses on foreign currency transactions financial expense	116,772,586	151,432,970
	Losses on foreign exchange translations financial expense	61,637,400	61,637,400
	Losses on disposition of receivables financial expense	3,218,114,017	13,946,802,832
	Losses on transaction of derivative financial instruments financial expense	112,440,875	112,440,875
	Losses on valuation of derivative financial instruments financial expense	(1,851,866,618)	173,136,926

## 22. Other income and expense

Other Income And Expenses

Current Fiscal Year (Quarter)

(Unit : KRW)

		Carrying amount	
		Disclosed Amount	
		Three months	Cumulative
Non-operating Income		1,275,320,453	19,811,848,164
Non-operating Income	Foreign exchange gain	2,157,985,034	14,798,241,514
	Gain on foreign exchange translations	(896,698,592)	4,737,346,353
	Gains on disposals of property, plant and equipment	14,022,016	266,828,761
	Gains on disposals of intangible assets	0	0
	Miscellaneous Income	11,995	9,431,536
Non-operating expense		(171,689,923)	30,300,463,491
Non-operating expense	Foreign exchange loss	9,198,311,853	27,700,089,415
	Loss on foreign exchange translations	(10,283,919,334)	1,233,436,542
	Losses on disposals of property, plant and equipment	395,763,191	487,034,396
	Impairment loss recognised in profit or loss, property, plant and equipment	0	359,113,117
	Losses on disposal of intangible assets	1,000	2,575,879
	Donations	0	0
	Miscellaneous Losses	518,153,367	518,214,142

Quarter (or Half-Year) of Last Fiscal Year

(Unit : KRW)

		Carrying amount	
		Disclosed Amount	
		Three months	Cumulative
Non-operating Income		2,888,077,755	17,366,427,916
Non-operating Income	Foreign exchange gain	3,920,979,589	14,811,001,564
	Gain on foreign exchange translations	(1,043,157,811)	2,513,631,730
	Gains on disposals of property, plant and equipment	4,773,099	23,661,694
	Gains on disposals of intangible assets	(1,914,870)	0

	Miscellaneous Income	7,397,748	18,132,928
Non-operating expense		8,100,072,394	15,974,941,363
Non-operating expense	Foreign exchange loss	4,136,093,219	10,734,334,777
	Loss on foreign exchange translations	3,989,292,758	4,904,565,447
	Losses on disposals of property, plant and equipment	(34,997,000)	170,740,604
	Impairment loss recognised in profit or loss, property, plant and equipment	0	39,936,643
	Losses on disposal of intangible assets	9,683,262	124,327,232
	Donations	0	1,000,000
	Miscellaneous Losses	155	36,660

### 23-1. Operating income

#### Disclosure Of Summary Of Revenue

Current Fiscal Year (Quarter)

(Unit : KRW)

		Carrying amount	
		Disclosed Amount	
		Three months	Cumulative
Revenue		394,391,131,472	1,249,238,954,809
Revenue	Revenue from sale of goods product	393,283,159,205	1,241,218,862,430
	Other revenue	1,107,972,267	8,020,092,379
Cost of sales		273,980,181,038	851,279,941,304
Cost of sales	Cost of sales from sale of goods product	273,780,657,382	847,532,900,643
	Other cost of sales	199,523,656	3,747,040,661
Selling, general and administrative expense		107,236,176,598	316,434,830,906
Operating income(loss)		13,174,773,836	81,524,182,599

Quarter (or Half-Year) of Last Fiscal Year

(Unit : KRW)

		Carrying amount	
		Disclosed Amount	
		Three months	Cumulative
Revenue		419,850,482,315	1,363,055,491,368
Revenue	Revenue from sale of	419,749,787,808	1,354,389,613,020

	goods product		
	Other revenue	100,694,507	8,665,878,348
Cost of sales		280,552,563,187	913,419,308,856
Cost of sales	Cost of sales from sale of goods product	280,469,744,100	907,472,428,252
	Other cost of sales	82,819,087	5,946,880,604
Selling, general and administrative expense		105,770,732,327	315,130,970,445
Operating income(loss)		33,527,186,801	134,505,212,067

### 23-2. Operating income

Selling, General And Administrative Expense

Current Fiscal Year (Quarter)

(Unit : KRW)

		Carrying amount	
		Disclosed Amount	
		Three months	Cumulative
Selling general and administrative expense		107,236,176,598	316,434,830,906
Selling general and administrative expense	SalariesWages And Bonus Selling General Administrative Expenses	17,145,074,937	52,233,142,009
	Provision for severance indemnities, selling and general administrative expenses	2,794,928,379	5,501,672,578
	Employee benefits, selling and general administrative expenses	3,802,126,587	10,382,125,807
	Travel expenses, selling and general administrative expenses	375,346,169	1,342,446,559
	Rental expenses, selling and general administrative expenses	436,021,505	1,321,605,099
	Commissions, selling and general administrative expenses	19,861,842,249	57,039,197,117
	Depreciation expense, selling and general administrative expenses	3,569,291,478	10,851,251,172
	Amortisation expense, selling and general administrative expenses	2,044,707,955	5,996,484,404
	Product warranty expenses recovery, selling and general administrative expenses	(238,419,839)	1,220,761,377
	Expenses of provisions for restoration, selling and general administrative expenses	0	(173,767,600)
	Ordinary development expense, selling and general administrative expenses	54,643,113,378	162,654,403,806

	Miscellaneous expenses	2,802,143,800	8,065,508,578
--	------------------------	---------------	---------------

Quarter (or Half-Year) of Last Fiscal Year

(Unit : KRW)

		Carrying amount	
		Disclosed Amount	
		Three months	Cumulative
Selling general and administrative expense		105,770,732,327	315,130,970,445
Selling general and administrative expense	SalariesWages And Bonus Selling General Administrative Expenses	17,441,155,535	53,723,737,818
	Provision for severance indemnities, selling and general administrative expenses	1,261,355,049	3,802,510,325
	Employee benefits, selling and general administrative expenses	3,410,898,789	9,992,844,764
	Travel expenses, selling and general administrative expenses	525,114,788	1,592,332,172
	Rental expenses, selling and general administrative expenses	374,646,295	1,122,355,688
	Commissions, selling and general administrative expenses	18,228,838,702	49,588,982,237
	Depreciation expense, selling and general administrative expenses	2,892,605,706	8,183,788,945
	Amortisation expense, selling and general administrative expenses	1,842,129,379	4,878,223,065
	Product warranty expenses recovery, selling and general administrative expenses	(135,967,770)	2,725,009,929
	Expenses of provisions for restoration, selling and general administrative expenses	0	0
	Ordinary development expense, selling and general administrative expenses	57,099,600,168	172,257,980,710
	Miscellaneous expenses	2,830,355,686	7,263,204,792

## 24. Employee benefits

Disclosure of defined benefit plans

Ending of Current Fiscal Year (Quarter)

(Unit : KRW)

		Disclosed Amount
--	--	------------------

Description of type of plan	당사는 종업원의 퇴직시 임금수준과 근속년수에 따라 정해지는 퇴직급여를 종업원에게 일시금으로 지급하고 있으며, 이는 확정급여제도로 분류됩니다. 동 퇴직급여제도는 법적 요건 충족시 종업원에게 중간정산을 허용하며, 중간정산 후의 퇴직금 산정을위한 근속연수는 정산시점으로부터 새로이 기산됩니다.
Defined benefit obligation, at present value	79,427,833,630
Plan assets, at fair value	(77,297,126,476)
Net defined benefit liability (asset)	2,130,707,154

Ending of Last Fiscal Year

(Unit : KRW)

	Disclosed Amount
Description of type of plan	당사는 종업원의 퇴직시 임금수준과 근속년수에 따라 정해지는 퇴직급여를 종업원에게 일시금으로 지급하고 있으며, 이는 확정급여제도로 분류됩니다. 동 퇴직급여제도는 법적 요건 충족시 종업원에게 중간정산을 허용하며, 중간정산 후의 퇴직금 산정을위한 근속연수는 정산시점으로부터 새로이 기산됩니다.
Defined benefit obligation, at present value	76,275,678,979
Plan assets, at fair value	(82,070,802,814)
Net defined benefit liability (asset)	(5,795,123,835)

Disclosure of net defined benefit liability (asset)

Current Fiscal Year (Quarter)

(Unit : KRW)

	Present value of defined benefit obligation	Plan assets	Total of Net defined benefit liability (asset)
Net defined benefit liability (asset) at beginning of period	76,275,678,979	(82,070,802,814)	(5,795,123,835)
Increase in net defined benefit liability (asset) resulting from current service cost	8,223,046,593		8,223,046,593
Increase (decrease) in net defined benefit liability (asset) resulting from past service cost	178,154,974		178,154,974
Increase (decrease) in net defined benefit liability (asset) resulting from interest expense (income)	2,120,423,034	(2,287,227,410)	(166,804,376)
Changes in net defined benefit liability (asset) resulting from gain (loss) on remeasurement in other comprehensive income [abstract]			

Changes in net defined benefit liability (asset) resulting from gain (loss) on remeasurement in other comprehensive income [abstract]	Decrease (increase) in net defined benefit liability (asset) resulting from gain (loss) on remeasurement in other comprehensive income		(5,091,544)	(5,091,544)
Increase (decrease) in net defined benefit liability (asset) resulting from movement of employees		(28,459,330)		(28,459,330)
Increase (decrease) in net defined benefit liability (asset) resulting from payments from plan		(7,341,010,620)	7,039,810,543	(301,200,077)
Increase (decrease) in net defined benefit liability (asset) resulting from administration costs not reflected in return on plan assets			26,184,749	26,184,749
Net defined benefit liability (asset) at end of period		79,427,833,630	(77,297,126,476)	2,130,707,154

Quarter (or Half-Year) of Last Fiscal Year

(Unit : KRW)

		Present value of defined benefit obligation	Plan assets	Total of Net defined benefit liability (asset)
Net defined benefit liability (asset) at beginning of period		77,449,337,342	(87,138,882,974)	(9,689,545,632)
Increase in net defined benefit liability (asset) resulting from current service cost		8,394,491,811		8,394,491,811
Increase (decrease) in net defined benefit liability (asset) resulting from past service cost		0		0
Increase (decrease) in net defined benefit liability (asset) resulting from interest expense (income)		2,467,443,714	(2,787,750,144)	(320,306,430)
Changes in net defined benefit liability (asset) resulting from gain (loss) on remeasurement in other comprehensive income [abstract]				
Changes in net defined benefit liability (asset) resulting from gain (loss) on remeasurement in other comprehensive income [abstract]	Decrease (increase) in net defined benefit liability (asset) resulting from gain (loss) on remeasurement in other comprehensive income		261,604,751	261,604,751
Increase (decrease) in net defined benefit liability (asset) resulting from movement of employees		(15,978,880)		(15,978,880)
Increase (decrease) in net defined benefit liability (asset) resulting from payments from plan		(12,876,476,740)	12,599,880,644	(276,596,096)
Increase (decrease) in net defined benefit liability (asset) resulting from administration costs not reflected in return on plan assets			137,012,109	137,012,109
Net defined benefit liability (asset) at end of period		75,418,817,247	(76,928,135,614)	(1,509,318,367)

## Disclosure Of Post employmentBenefit ExpenseDefined BenefitPlans

Current Fiscal Year (Quarter)

(Unit : KRW)

		Disclosed Amount
Post-employment benefit expense in profit or loss, defined benefit plans [abstract]		
Post-employment benefit expense in profit or loss, defined benefit plans [abstract]	Current service cost, defined benefit plans	8,223,046,593
	Past service cost, defined benefit plans	178,154,974
	Interest expense (income), defined benefit plans Net	(166,804,376)
	Administration costs not reflected in return on plan assets, defined benefit plans	26,184,749
	Total post-employment benefit expense in profit or loss, defined benefit plans	8,260,581,940

Quarter (or Half-Year) of Last Fiscal Year

(Unit : KRW)

		Disclosed Amount
Post-employment benefit expense in profit or loss, defined benefit plans [abstract]		
Post-employment benefit expense in profit or loss, defined benefit plans [abstract]	Current service cost, defined benefit plans	8,394,491,811
	Past service cost, defined benefit plans	0
	Interest expense (income), defined benefit plans Net	(320,306,430)
	Administration costs not reflected in return on plan assets, defined benefit plans	137,012,109
	Total post-employment benefit expense in profit or loss, defined benefit plans	8,211,197,490

## 25. Income taxes

Reconciliation of accounting profit multiplied by applicable tax rates

Current Fiscal Year (Quarter)

	Disclosed Amount
Description of tax expense	법인세비용은 전체 회계연도에 대해서 예상되는 최선의 가중평균 연간법인세율의 추정에 기초하여 인식하였습니다.

Average effective tax rate	0.2180
----------------------------	--------

Quarter (or Half-Year) of Last Fiscal Year

	Disclosed Amount
Description of tax expense	법인세비용은 전체 회계연도에 대해서 예상되는 최선의 가중평균 연간법인세율의 추정에 기초하여 인식하였습니다.
Average effective tax rate	0.2120

## 26. Cash flow statement

Cash flows from (used in) operating activities

Current Fiscal Year (Quarter)

(Unit : KRW)

		Disclosed Amount
Adjustments for reconcile profit/loss abstract		
Adjustments for reconcile profit/loss abstract	Adjustments for income tax expense	17,665,031,781
	Adjustments for depreciation expense	17,435,581,763
	Adjustments for write-downs of inventories	0
	Adjustments for reversals of inventories	(11,410,865,299)
	Adjustments for reversal of provisions for returns	33,721,317
	Adjustments for losses from inventory writeoff	12,628,337,336
	Adjustments for refunds provision	(56,646,457)
	Adjustments for gain on disposition of tangible assets	(266,828,761)
	Adjustments for losses on disposition of property plant and equipment	487,034,396
	Adjustments for losses on disposals of intangible assets	2,575,879
	Adjustments for impairment losses of property plant and equipment	359,113,117
	Adjustments for amortisation expense	7,953,271,868
	Adjustments for provision for	8,260,581,940

	severance indemnities	
	Adjustments for gain on foreign exchange translations	(4,777,609,996)
	Adjustments for losses on foreign exchange translations	1,234,468,934
	Adjustments for dividend income	(171,207,150)
	Adjustments for interest income	(11,327,594,260)
	Adjustments for interest expense	2,401,661,410
	Adjustments for product warranty expenses	1,220,761,377
	Adjustments for expense of other provisions	35,728,378
	Adjustments for other long-term employee benefits	333,708,390
	Adjustments for losses on change in fair value of derivatives	1,709,627,852
	Adjustments for gains on change in fair value of derivatives	(17,021,085)
	Adjustments for reversal of provision for decommissioning, restoration, and rehabilitation costs	(173,767,600)
	Other adjustments to reconcile profit (loss)	0
	Adjustments to reconcile profit (loss)	43,559,665,130
Adjustments for assets liabilities of operating activities abstract		
Adjustments for assets liabilities of operating activities abstract	Adjustments for decrease (increase) in trade accounts receivable	95,153,538,924
	Adjustments for decrease (increase) in other operating receivables	1,588,996,289
	Adjustments for decrease (increase) in other assets	14,655,936,596
	Adjustments for decrease (increase) in inventories	(41,357,485,009)
	Adjustments for increase	8,009,581,683

	(decrease) in trade accounts payable	
	Adjustments for increase (decrease) in other liabilities	(30,657,921,024)
	Adjustments for increase (decrease) in other operating payables	(21,935,448,810)
	Adjustments for increase (decrease) in non-current provisions for employee benefits	(117,800,000)
	Adjustments for increase (decrease) in employee benefit liabilities	(329,659,407)
	Adjustments for increase (decrease) in other financial liabilities	(13,642,987,958)
	Adjustments for assets and liabilities of operating activities	11,366,751,284

Quarter (or Half-Year) of Last Fiscal Year

(Unit : KRW)

		Disclosed Amount
Adjustments for reconcile profit/loss abstract		
Adjustments for reconcile profit/loss abstract	Adjustments for income tax expense	29,059,121,289
	Adjustments for depreciation expense	15,944,967,795
	Adjustments for write-downs of inventories	0
	Adjustments for reversals of inventories	(4,592,579,911)
	Adjustments for reversal of provisions for returns	28,351,115
	Adjustments for losses from inventory writeoff	5,101,290,439
	Adjustments for refunds provision	(42,199,928)
	Adjustments for gain on disposition of tangible assets	(23,661,694)
	Adjustments for losses on disposition of property plant and equipment	170,740,604
	Adjustments for losses on	124,327,232

	disposals of intangible assets	
	Adjustments for impairment losses of property plant and equipment	39,936,643
	Adjustments for amortisation expense	6,470,258,892
	Adjustments for provision for severance indemnities	8,211,197,490
	Adjustments for gain on foreign exchange translations	(2,513,631,730)
	Adjustments for losses on foreign exchange translations	4,966,202,847
	Adjustments for dividend income	(303,000,000)
	Adjustments for interest income	(13,514,536,050)
	Adjustments for interest expense	1,105,628,568
	Adjustments for product warranty expenses	2,725,009,929
	Adjustments for expense of other provisions	236,263,805
	Adjustments for other long-term employee benefits	294,027,417
	Adjustments for losses on change in fair value of derivatives	173,136,926
	Adjustments for gains on change in fair value of derivatives	(1,154,696,300)
	Adjustments for reversal of provision for decommissioning, restoration, and rehabilitation costs	0
	Other adjustments to reconcile profit (loss)	(158,421)
	Adjustments to reconcile profit (loss)	52,505,996,957
Adjustments for assets liabilities of operating activities abstract		
Adjustments for assets liabilities of operating activities abstract	Adjustments for decrease (increase) in trade accounts receivable	(123,680,860,314)
	Adjustments for decrease	(5,174,037,128)

	(increase) in other operating receivables	
	Adjustments for decrease (increase) in other assets	15,005,743,275
	Adjustments for decrease (increase) in inventories	97,281,350,869
	Adjustments for increase (decrease) in trade accounts payable	88,948,346,832
	Adjustments for increase (decrease) in other liabilities	(14,362,339,384)
	Adjustments for increase (decrease) in other operating payables	(632,072,807)
	Adjustments for increase (decrease) in non-current provisions for employee benefits	(120,200,000)
	Adjustments for increase (decrease) in employee benefit liabilities	(292,574,976)
	Adjustments for increase (decrease) in other financial liabilities	0
	Adjustments for assets and liabilities of operating activities	56,973,356,367

Disclose of significant noncash transaction

Current Fiscal Year (Quarter)

(Unit : KRW)

	Disclosed Amount
Transfer from construction in progress, progress, property, plant and equipment	9,675,019,298
Transfer from construction in progress, intangible assets	6,468,674,592
Increase(decrease) in accounts payable other relating to the acquisition of property and equipment and intangible assets	(3,455,350,280)
Increase(decrease) in accounts receivables other relating to the sale of property and equipment	189,900,000
Recognition of right of use assets arising from lease agreements	9,903,609,036

Reclassification of lease liabilities between current and non current	5,134,291,030
Reclassification of loans and receivables between current and noncurrent	524,719,822

Quarter (or Half-Year) of Last Fiscal Year

(Unit : KRW)

	Disclosed Amount
Transfer from construction in progress, progress, property, plant and equipment	17,962,638,769
Transfer from construction in progress, intangible assets	25,615,662,914
Increase(decrease) in accounts payable other relating to the acquisition of property and equipment and intangible assets	(2,821,638,296)
Increase(decrease) in accounts receivables other relating to the sale of property and equipment	0
Recognition of right of use assets arising from lease agreements	9,308,394,687
Reclassification of lease liabilities between current and non current	5,131,341,200
Reclassification of loans and receivables between current and noncurrent	599,485,675

Disclosure of reconciliation of liabilities arising from financing activities

Current Fiscal Year

(Quarter)

(Unit : KRW)

	Dividend payables	Lease liabilities	Total of Liabilities arising from financing activities
Liabilities arising from financing activities at beginning of period	80,315	33,989,501,242	33,989,581,557
Increase (decrease) through financing cash flows, liabilities arising from financing activities	(39,034,211,466)	(5,517,732,879)	(44,551,944,345)

Increase (decrease) through other changes, liabilities arising from financing activities	39,034,320,000	6,216,854,215	45,251,174,215
Liabilities arising from financing activities at end of period	188,849	34,688,622,578	34,688,811,427

Quarter (or Half-Year) of Last Fiscal Year

(Unit : KRW)

	Dividend payables	Lease liabilities	Total of Liabilities arising from financing activities
Liabilities arising from financing activities at beginning of period	0	19,183,732,432	19,183,732,432
Increase (decrease) through financing cash flows, liabilities arising from financing activities	(29,275,659,685)	(5,396,009,292)	(34,671,668,977)
Increase (decrease) through other changes, liabilities arising from financing activities	29,275,740,000	8,982,400,640	38,258,140,640
Liabilities arising from financing activities at end of period	80,315	22,770,123,780	22,770,204,095

## 27. Restricted financial assets

Restricted financial assets

Ending of Current Fiscal Year (Quarter)

(Unit : KRW)

	Financial assets, class
	Financial assets at amortised cost, class
	Other receivables
Restricted financial assets	2,000,000
Explanation of restricted financial assets	당좌개설보증금

Ending of Last Fiscal Year

(Unit : KRW)

	Financial assets, class
	Financial assets at amortised cost, class

	Other receivables
Restricted financial assets	2,000,000
Explanation of restricted financial assets	당좌개설보증금

## 28. Related party

당분기말과 전기말 현재 당사의 특수관계자의 내역

특수관계 구분	당분기말	전기말
중속기업	LX Semicon U.S.A., Inc	LX Semicon U.S.A., Inc
	LX Semicon China Co., Ltd.	LX Semicon China Co., Ltd.
	LX Semicon Japan Co., Ltd.	LX Semicon Japan Co., Ltd.
	LX Semicon Taiwan Co., Ltd.	LX Semicon Taiwan Co., Ltd.
관계기업 및 공동기업	어드밴스드파워디바이스테크놀로지 주식회사	어드밴스드파워디바이스테크놀로지 주식회사
	FJ Composite Materials Co.,Ltd	FJ Composite Materials Co.,Ltd
	(주)텔레칩스	(주)텔레칩스
	엘엑스벤처스신기술사업투자조합 1호	엘엑스벤처스신기술사업투자조합 1호
당사에 유의적인 영향 력을 행사하는 회사	(주)LX홀딩스	(주)LX홀딩스
기타	(주)LX홀딩스의 공동기업	(주)LX홀딩스의 공동기업
	대규모기업집단 계열회사	대규모기업집단 계열회사

Disclosure of transactions between related parties

Current Fiscal Year (Quarter)

(Unit : KRW)

Entity's total for related parties	Related parties																							
	Subsidiaries								Associates and joint ventures where entity is venture				Entities with joint control or significant influence over entity				Large business group							
	LX Semicon U.S.A., Inc		LX Semicon China Co., Ltd.		LX Semicon Japan Co., Ltd.		LX Semicon Taiwan Co., Ltd.		FJ composite materials member		Telechipsinc Member		LX holdings member		LX panics co ltd member		LX MDI co ltd member		LX hausys co ltd member		LX international co ltd member		LX international japan ltd member	
Three months	Cumulative	Three months	Cumulative	Three months	Cumulative	Three months	Cumulative	Three months	Cumulative	Three months	Cumulative	Three months	Cumulative	Three months	Cumulative	Three months	Cumulative	Three months	Cumulative	Three months	Cumulative	Three months	Cumulative	
Purchases of goods related party transactions	1,373,866.5	3,907,854.4	4,992,168.2	14,173,457.	2,728,220.2	7,703,538.9	457,188.4	1,316,353.9	0	7,559,820	0	0	766,129.0	2,492,439.	1,119,756.	3,332,569.	385,018.62	915,500.12	0	40,498.5	0	0	0	0



	LX Semicon U.S.A., Inc				venture	influence over entity				
	LX Semicon China Co., Ltd.	LX Semicon Japan Co., Ltd.	LX Semicon Taiwan Co., Ltd.	FJ composite materials member	LX holdings member	LX pantos co ltd member	LX MDI co ltd member	LX hausys co ltd member		
Amounts receivable, related party transactions	3,268,654	0	2,687,998	2,688,003	76,291,793	299,329,000	0	0	0	384,265,448
Amounts payable, related party transactions	481,930,503	1,640,908,372	924,009,837	100,344,063	0	0	708,816,698	54,765,020	0	3,910,774,513
Explanation of details of guarantees given or received of outstanding balances for related party transaction										당사가 특수관계자를 위하여 제공하거나 특 수관계자로부터 제공 받고 있는 담보 및 보 통 내역은 없습니다.

Ending of Last Fiscal Year

(Unit : KRW)

	Entity's total for related parties										
	Related parties										
	Subsidiaries				Associates and Joint ventures where entity is venture	Entities with joint control or significant influence over entity	Large business group				Total of Entity's total for related parties
	LX Semicon U.S.A., Inc	LX Semicon China Co., Ltd.	LX Semicon Japan Co., Ltd.	LX Semicon Taiwan Co., Ltd.	FJ composite materials member	LX holdings member	LX pantos co ltd member	LX MDI co ltd member	LX hausys co ltd member		
Amounts receivable, related party transactions	3,234,000	0	0	2,677,502	0	65,870,000	0	0	0	71,781,502	
Amounts payable, related party transactions	498,913,840	2,367,291,039	1,031,012,037	199,010,710	7,430,585	0	633,664,652	6,938,240	133,645,301	4,877,906,404	
Explanation of details of guarantees given or received of outstanding balances for related party transaction										당사가 특수관계자를 위하여 제공하거나 특 수관계자로부터 제공 받고 있는 담보 및 보 통 내역은 없습니다.	

Disclosure of financial transactions between related parties

Current Fiscal Year

(Quarter)

(Unit : KRW)

	Entity's total for related parties			Total of Entity's total for related parties
	Related parties			
	Subsidiaries	Associates and Joint ventures where entity is venture	Entities with joint control or significant influence over entity	
	LX Semicon	TelechipsInc	LX holdings	

	Taiwan Co., Ltd.	Member	member	
Dividends Received, related party transactions	0	90,900,000	0	90,900,000
Dividends Paid, related party transactions	0	0	12,913,257,600	12,913,257,600
Equity contributions in cash				

Quarter (or Half-  
Year) of Last Fiscal  
Year

(Unit : KRW)

Entity's total for related parties				Total of Entity's total for related parties
Related parties				
Subsidiaries	Associates and Joint ventures where entity is venture	Entities with joint control or significant influence over entity		
	LX Semicon Taiwan Co., Ltd.	TelechipsInc Member	LX holdings member	
Dividends Received, related party transactions	0	303,000,000	0	303,000,000
Dividends Paid, related party transactions	0	0	9,684,943,200	9,684,943,200
Equity contributions in cash	716,890,000	0	0	716,890,000

Disclosure of compensation for key management personnel

Current Fiscal Year (Quarter)

(Unit : KRW)

	Carrying amount	
	Disclosed Amount	
	Three months	Cumulative
Key management personnel compensation, short-term employee benefits	3,064,718,014	9,454,214,425





## 6. Matters related to dividends

배당에 관한 사항은 기업공시서식 작성기준에 따라 분기보고서에 기재하지 않습니다.(사업보고서에 기재 예정)

## 7. Matters related to financing through issuance of securities

### 7-1. Performance of financing through securities issuance

[Matters related to the issuance, etc. of equity securities]

#### 가. 지분증권의 발행 등에 관한 사항

지분증권의 발행 등에 관한 사항은 기업공시서식 작성기준에 따라 분기보고서에 기재하지 않습니다.(사업보고서에 기재 예정)

#### 나. 채무증권의 발행 등에 관한 사항

[Matters related to issuance of debt securities, etc.]

#### (1) 채무증권 발행실적

##### Debt securities issuance performance

(Record date: 2025.09.30 ) (Unit: KRW, %)

Issuing company	Securities type	Method of issuance	Issue date	Total face (or electronically registered) value (KRW)	Interest rate	Rating (assessment institution)	Maturity date	Redemption status	Underwriter
-	-	-	-	-	-	-	-	-	-
Total	-	-	-	-	-	-	-	-	-

#### (2) 기업어음증권 미상환 잔액

##### Outstanding balance of commercial paper

(Record date: 2025.09.30 ) (Unit: KRW)

Remainder to maturity		10 days or less	10 to 30 days	30 to 90 days	90 to 180 days	180 days to 1 year	1 to 2 years	Over two years and up to three years	Over three years	Total
Outstanding	Public offering	-	-	-	-	-	-	-	-	-

balance	Private placement	-	-	-	-	-	-	-	-	-
	Total	-	-	-	-	-	-	-	-	-

**(3) 단기사채 미상환 잔액**

Outstanding balance of short-term bonds

(Record date: 2025.09.30 ) (Unit: KRW)

Remainder to maturity		10 days or less	10 to 30 days	30 to 90 days	90 to 180 days	180 days to 1 year	Total	Issuance limit	Remaining limit
Outstanding balance	Public offering	-	-	-	-	-	-	-	-
	Private placement	-	-	-	-	-	-	-	-
	Total	-	-	-	-	-	-	-	-

**(4) 회사채 미상환 잔액**

Outstanding balance of corporate bonds

(Record date: 2025.09.30 ) (Unit: KRW)

Remainder to maturity		1 year or less	1 to 2 years	Over two years and up to three years	Over three years and up to four years	4 to 5 years	Over five years and up to 10 years	Over 10 years	Total
Outstanding balance	Public offering	-	-	-	-	-	-	-	-
	Private placement	-	-	-	-	-	-	-	-
	Total	-	-	-	-	-	-	-	-

**(5) 신종자본증권 미상환 잔액**

Outstanding balance of hybrid securities

(Record date: 2025.09.30 ) (Unit: KRW)

Remainder to maturity		1 year or less	1 to 5 years	Over five years and up to 10 years	10 to 15 years	15 to 20 years	Over 20 years and up to 30 years	Over 30 years	Total
Outstanding balance	Public offering	-	-	-	-	-	-	-	-
	Private	-	-	-	-	-	-	-	-

	placement									
	Total	-	-	-	-	-	-	-	-	-

(6) 조건부자본증권 미상환 잔액

Outstanding balance of contingent capital securities

(Record date:

2025.09.30 )

(Unit: KRW)

Remainder to maturity		1 year or less	1 to 2 years	Over two years and up to three years	Over three years and up to four years	4 to 5 years	Over five years and up to 10 years	10 to 20 years	Over 20 years and up to 30 years	Over 30 years	Total
Outstanding balance	Public offering	-	-	-	-	-	-	-	-	-	-
	Private placement	-	-	-	-	-	-	-	-	-	-
	Total	-	-	-	-	-	-	-	-	-	-

7-2. Performance of fund utilization from securities issuance

공시서류작성대상기간 중 증권발행을 통해 자금을 조달한 실적이 없으므로 해당사항 없습니다.

8. Other financial matters

가. 재무제표 재작성 등 유의사항

(1) (연결)재무제표를 재작성한 경우 재작성사유, 내용 및 (연결)재무제표에 미치는 영향

보고서 작성기준일 현재 해당사항 없습니다.

(2) 합병, 분할, 자산양수도, 영업양수도

보고서 작성기준일 현재 해당사항 없습니다.

(3) 자산유동화와 관련한 자산매각의 회계처리 및 우발채무 등에 관한 사항

보고서 작성기준일 현재 해당사항 없습니다.

(4) 기타 재무제표 이용에 유의하여야 할 사항

보고서 작성기준일 현재 감사보고서상 강조사항 및 핵심감사사항, 계속기업관련 중요한 불확실성 관련 사항이 있는 경우가 없습니다.

**나. 대손충당금 설정현황**

**(1) 계정과목별 대손충당금 설정내용**

[기준일 : 2025년 9월 30일]

(단위 : 백만원, %)

구분	계정과목	채권금액	대손충당금	대손충당금 설정률
제27기 3분기	매출채권	356,037	-	0.0
	기타채권	4,701	-	0.0
	비유동기타채권	8,619	-	0.0
	합계	369,357	-	0.0
제26기	매출채권	448,799	-	0.0
	기타채권	5,316	-	0.0
	비유동기타채권	9,483	-	0.0
	합계	463,598	-	0.0
제25기	매출채권	204,969	-	0.0
	기타채권	3,419	-	0.0
	비유동기타채권	12,769	-	0.0
	합계	221,157	-	0.0

주) 당사의 연결대상 종속회사는 대손충당금 설정내역이 없습니다.

**(2) 대손충당금 변동현황**

매출채권에 대한 대손충당금의 기중 변동내역은 다음과 같습니다.

[기준일 : 2025년 9월 30일]

(단위 : 백만원)

구분	제27기 3분기	제26기	제25기
1. 기초대손충당금 잔액합계	-	-	-
2. 순대손처리액(①+②±③)	-	-	-
① 대손처리액(상각채권액)	-	-	-
② 상각채권회수액	-	-	-
③ 기타증감액	-	-	-
3. 대손상각비 계상(환입)액	-	-	-
4. 기말 대손충당금 잔액 합계	-	-	-

주) 당사의 연결대상 종속회사는 대손충당금 변동내역이 없습니다.

### (3) 매출채권 관련 대손충당금 설정방침

매출채권 등의 잔액에 대하여 개별적 분석 방법과 연령분석을 병행하여 대손 추정된 금액을 대손충당금으로 설정하고 있습니다.

- 채권연령분석 결과 1년이상 채권은 100% 대손 설정하였습니다.
- 과거 3개년 평균채권잔액에 대한 실제 대손 발생액을 근거로 대손경험률을 산정하여 설정하였습니다.

### (4) 당기말 현재 경과기간별 매출채권 잔액 현황

[기준일 : 2025년 9월 30일]

(단위 : 백만원)

구분	채권 발생 경과 기간		합계
	6개월 이내	6개월 초과	
매출채권	356,037	-	356,037
합계	356,037	-	356,037
구성비율(%)	100.00	-	100.00

## 다. 재고자산 현황 등

### (1) 재고자산의 사업부문별 보유현황

[기준일 : 2025년 9월 30일]

(단위 : 백만원)

사업부문	계정과목	제27기 3분기	제26기	제25기	비고
System IC	제품	101,951	69,071	102,921	-
	상품	0	0	21	-
	재공품	149,595	142,369	232,949	-
합계		251,546	211,440	335,891	-
총자산대비 재고자산 구성비율(%) [재고자산합계÷기말자산총계×100]		17.2	14.1	27.9	-
재고자산회전율(회수) [매출원가÷{(기초재고+기말재고)÷2}]		4.9	4.6	3.3	-

주) 당사의 방열기판 사업 관련 총재고자산이 총자산액의 2% 미만이므로 주된 사업부문인 System IC로 통합하여 기재하였습니다.

### (2) 재고자산의 실사내용

#### ① 실사 일자

6월말 및 12월말 기준으로 매년 2회 재고자산 실사를 실시하고 있습니다.  
 2025년(제27기) 재고자산 실사일자는 다음과 같습니다.  
 - 2025년 상반기 재고자산 실사일자: 2025년 6월 26일

② 실사 방법

전수조사 실시를 기본으로 하며, 일부 중요성이 작은 품목의 경우 Sample 조사를 실시하고 있습니다.  
 외부감사인은 재고실사를 입회하여, 표본을 추출하여 재고자산의 실재성을 확인합니다.

③ 장기체화재고 등 현황

재고자산의 진부화 평가로 인한 손실을 판단하고 있으며, 2025년 9월 30일 기준 재고자산에 대한 평가내역은 다음과 같습니다

[기준일 : 2025년 9월 30일]

(단위 : 백만원)

계정과목	취득원가	보유금액	평가충당금	당분기말잔액
재고자산	295,711	295,711	-44,165	251,546

④ 재고자산 담보제공여부

작성기준일 현재 재고자산의 담보제공 사실이 없으므로 해당사항 없습니다.

라. 수주계약 현황

보고서 작성기준일 현재 계약수익금액이 직전사업연도 재무제표상 매출액의 5% 이상인 계약이 없으므로 해당사항 없습니다.

마. 공정가치평가 내역

공정가치 서열체계를 포함한 금융자산과 금융부채의 장부금액과 공정가치는 다음과 같습니다.

(단위: 원)				
구분	당분기말		전기말	
	장부금액	공정가치	장부금액	공정가치
금융자산:				
당기손익-공정가치 측정 항목				
기타금융자산	6,000,000,000	6,000,000,000	-	-

기타포괄손익-공정가치 측정 항목				
매출채권	320,579,662,557	(*2)	423,875,255,010	(*2)
상각후원가 측정 항목				
현금및현금성자산	116,027,840,860	(*2)	238,812,527,045	(*2)
단기금융상품	320,428,653,493	(*2)	160,000,000,000	(*2)
매출채권	35,456,869,645	(*2)	24,923,491,653	(*2)
기타채권	13,320,148,326	(*2)	14,798,939,241	(*2)
소 계	485,233,512,324		438,534,957,939	
위험회피목적파생상품				
기타금융자산	17,021,085	17,021,085	-	-
합 계	811,830,195,966		862,410,212,949	
금융부채:				
상각후원가 측정 항목				
매입채무	162,100,890,250	(*2)	153,443,980,008	(*2)
기타채무(*1)	64,536,530,710	(*2)	106,685,420,663	(*2)
소 계	226,637,420,960		260,129,400,671	
위험회피목적파생상품				
기타금융부채	1,709,627,852	1,709,627,852	13,642,987,958	13,642,987,958
기타				
리스부채	37,417,953,128	(*3)	37,127,708,092	(*3)
합 계	265,765,001,940		310,900,096,721	

(\*1) 금융부채에 포함되지 않은 종업원 관련 채무 등은 제외되어 있습니다.

(\*2) 장부금액이 공정가치의 합리적인 근사치이므로 공정가치 서열체계 및 측정방법 등 공시에서 제외하였습니다.

(\*3) 리스부채는 기업회계기준서 제1107호 '금융상품:공시'에 따라 공정가치 공시에서 제외하였습니다.

## IV. Director's Management Assessment and Analysis Opinion

이사의 경영진단 및 분석의견은 기업공시서식 작성기준에 따라 분기보고서에 기재하지 않습니다.(사업보고서에 기재 예정)

## V. Accounting Auditor's Audit Opinion, etc.

### 1. Matters related to external audit

#### 가. 회계감사인의 명칭 및 감사의견

Fiscal year	Category	Auditors	Audit opinion	Reasons for change in opinion	Significant uncertainty related to going concern	Matters of emphasis	Key audit matters
제27기 3분기 (당기)	Audit Report	삼일회계법인	-	해당사항 없음	해당사항 없음	해당사항 없음	재고자산 평가
	Consolidated Audit Report	삼일회계법인	-	해당사항 없음	해당사항 없음	해당사항 없음	재고자산 평가
제26기 (전기)	Audit Report	삼일회계법인	Unqualified opinion	해당사항 없음	해당사항 없음	해당사항 없음	재고자산 평가
	Consolidated Audit Report	삼일회계법인	Unqualified opinion	해당사항 없음	해당사항 없음	해당사항 없음	재고자산 평가
제25기 (전전기)	Audit Report	삼일회계법인	Unqualified opinion	해당사항 없음	해당사항 없음	해당사항 없음	재고자산 평가
	Consolidated Audit Report	삼일회계법인	Unqualified opinion	해당사항 없음	해당사항 없음	해당사항 없음	재고자산 평가

#### 나. 감사용역 체결현황

(Unit: KRW million, hours)

Fiscal year	Auditors	Details	Audit contract details		Actual performance details	
			Remuneration	Hours	Remuneration	Hours
제27기 3분기 (당기)	삼일회계법인	분,반기 검토/ 별도 및 연결재무제표에 대한 감사 내부회계관리제도에 대한 감사	300	3,200	225	1,650
제26기 (전기)	삼일회계법인	분,반기 검토/별도 및 연결재무제표에 대한 감사 내부회계관리제도에 대한 감사	300	3,200	300	3,040
제25기 (전전기)	삼일회계법인	분,반기 검토/별도 및 연결재무제표에 대한 감사 내부회계관리제도에 대한 감사	280	3,200	280	3,046

#### 다. 회계감사인과의 비감사용역 계약체결 현황

(단위 : 백만원)

Fiscal year	Contract conclusion date	Service details	Service performance period	Service remuneration	Note
제27기 3분기 (당기)	2025.11	세무자문 용역	2025.11 ~ 2025.12	17	-
	2025.07	세무자문 용역	2025.08 ~ 2026.04	12	-

	2025.07	세무자문 용역	2025.06 ~ 2025.09	230	-
	2025.07	세무자문 용역	2025.08 ~ 2025.10	10	-
	2025.07	재무정보 검증에 대한 합의된 절차수행	2025.07 ~ 2025.07	0	-
제26기 (전기)	2024.11	Application 이용 계약	2024.12 ~ 2027.12	15	-
	2024.11	세무자문 용역	2024.11 ~ 2024.12	20	-
	2024.08	세무자문 용역	2024.08 ~ 2025.03	12	-
	2024.06	재무정보 검증에 대한 합의된 절차수행	2024.06 ~ 2024.06	0	-
제25기 (전전기)	2024.01	세무자문 용역	2024.01 ~ 2025.01	18	-
	2023.08	세무자문 용역	2023.08 ~ 2023.12	25	-
	2023.08	이전가격 검토	2023.08 ~ 2023.10	10	-
	2023.08	세무자문 용역	2023.08 ~ 2024.03	12	-
	2022.12	세무자문 용역	2022.12 ~ 2023.03	5	삼일회계법인(감사계약 체결 전 계약 건)
	2022.07	세무자문 용역	2022.07 ~ 2023.03	13	삼일회계법인(감사계약 체결 전 계약 건)

라. 재무제표 중 이해관계자의 판단에 상당한 영향을 미칠 수 있는 사항에 대해 내부감사기구가 회계감사인과 논의한 결과

Category	Date	Attendees	Method	Key discussions
1	2023.01.26	회사 : 감사위원회 위원 3인 감사인 : 업무수행이사	대면	기말 감사결과 보고, 내부회계관리제도 운영평가 결과 보고
2	2023.07.26	회사 : 감사위원회 위원 3인 감사인 : 업무수행이사	대면	연간 감사계획 및 진행상황 보고
3	2023.12.20	회사 : 감사위원회 위원 3인 감사인 : 업무수행이사	서면	감사 및 검토에서의 유의적 발견사항 핵심감사사항에 대한 진행경과 보고
4	2024.01.25	회사 : 감사위원회 위원 3인 감사인 : 업무수행이사	대면	감사에서의 유의적 발견사항, 기말감사 진행 경과 보고
5	2024.03.11	회사 : 감사위원회 위원 3인 감사인 : 업무수행이사	서면	기말감사 종결 보고, 후속사건 보고
6	2024.04.22	회사 : 감사위원회 위원 3인 감사인 : 업무수행이사	대면	연간 감사계획 및 분기 검토 진행상황 보고
7	2024.07.25	회사 : 감사위원회 위원 3인 감사인 : 업무수행이사	대면	연간 감사계획 및 반기 검토 진행상황 보고
8	2024.11.12	회사 : 감사위원회 위원 3인 감사인 : 업무수행이사	대면	연간 감사계획 및 분기 검토 진행상황 보고
9	2025.01.22	회사 : 감사위원회 위원 3인 감사인 : 업무수행이사	대면	감사에서의 유의적 발견사항, 기말감사 진행 경과 보고
10	2025.03.10	회사 : 감사위원회 위원 3인 감사인 : 업무수행이사	서면	기말감사 종결 보고
11	2025.04.25	회사 : 감사위원회 위원 3인 감사인 : 업무수행이사	대면	연간 감사계획 및 분기 검토 진행상황 보고
12	2025.07.24	회사 : 감사위원회 위원 3인 감사인 : 업무수행이사	대면	연간 감사계획 및 반기 검토 진행상황 보고
13	2025.11.04	회사 : 감사위원회 위원 3인 감사인 : 업무수행이사	대면	분기 검토 진행경과 및 연간 감사 진행 보고

### 마. 종속회사 감사의견

모든 종속회사가 회계감사인으로부터 적정의견을 받았습니다.

### 바. 회계감사인의 변경

당사는 2020-2022년 지정감사 대상기간이 만료됨에 따라 감사위원회에서 삼일회계법인을 제25기-제27기 감사인으로 선임하였습니다.

### 사. 전·당기 재무제표 불일치 세부정보 및 의견불일치 조정협의회의 주요 협의내용

보고서 작성기준일 현재 전·감사인간 의견불일치로 전기 재무제표의 오류 여부 및 수정 등에 대한 사항이 없으므로 해당사항 없습니다.

## 2. Matters related to internal control

내부통제에 관한 사항은 기업공시서식 작성기준에 따라 분기보고서에 기재하지 않습니다.  
(반기·사업보고서에 기재 예정)

## VI. Matters Related to Corporate Bodies Including the Board of Directors, etc.

### 1. Matters related to the board of directors

이사회에 관한 사항은 기업공시서식 작성기준에 따라 분기보고서에 기재하지 않습니다.(반기·사업보고서에 기재 예정)

### 2. Matters related to the audit system

감사제도에 관한 사항은 기업공시서식 작성기준에 따라 분기보고서에 기재하지 않습니다.(반기·사업보고서에 기재 예정)

### 3. Matters related to general shareholders' meeting, etc.

주주총회 등에 관한 사항은 기업공시서식 작성기준에 따라 분기보고서에 기재하지 않습니다.(1분기·반기·사업보고서에 기재 예정)

## VII. Matters Related to Shareholders

주주에 관한 사항은 기업공시서식 작성기준에 따라 분기보고서에 기재하지 않습니다.(반기  
· 사업보고서에 기재 예정)

# VIII. Matters Related to Executives and Employees, etc.

## 1. Status of executives and employees, etc.

### 가. 임원의 현황

(Record

2025.09.30 )

(Unit: shares)

date:

Name	Gender	Birth year and month	Position	Whether registered executive	Whether full-time	Responsibilities	Major career	Number of shares held		Relationship to the largest shareholder	Period of employment	Term expiration date
								Voting share	Non-voting share			
이운태	Male	1960.07	사장	Executive Directors	Full-time	대표이사, 이사회위원장, ESG위원	KAIST 전기공학(박사) 삼성전기주 대표이사	2,500	-	계열회사(㈜LX세미콘) 등기임원	'23.11.08 ~현재	2027.03.20
강훈	Male	1969.05	상무	Executive Directors	Full-time	CFO, 내부회계관리자	고려대학교 경영학과(학사) ㈜LX인터내셔널 인니경영관리담당	-	-	계열회사(㈜LX세미콘) 등기임원	'22.11.15 ~현재	2026.03.22
노진서	Male	1968.09	이사	Other Non-Executive Directors	Part-time	전사 경영전반에 대한 업무	MIT(석사) LG전자㈜ 전략부문 부서장	-	-	최대주주(㈜LX홀딩스) 등기임원	'21.03.18 ~현재	2027.03.20
정성욱	Male	1965.06	이사	Outside Director	Part-time	전사 경영전반에 대한 업무, 감사위원, ESG위원장	Illinois Univ.(Urbana Champaign) 전자공학(박사) 연세대학교 전기전자공학부 교수	-	-	해당사항 없음	'23.03.23 ~현재	2026.03.22
한성명	Male	1955.06	이사	Outside Director	Part-time	전사 경영전반에 대한 업무	스티븐슨공대 재료공학(박사) LG디스플레이㈜ 대표이사 부회장	-	-	해당사항 없음	'24.03.21 ~현재	2027.03.20
김남수	Male	1965.10	이사	Outside Director	Part-time	전사 경영전반에 대한 업무, 감사위원, ESG위원	KAIST 전기 및 전자공학(박사) 서울대학교 전기정보공학부 교수	-	-	해당사항 없음	'24.03.21 ~현재	2027.03.20
김범	Male	1968.07	이사	Outside Director	Part-time	전사 경영전반에 대한 업무, 감사위원, ESG위원	University of Alabama 재료학(박사) 충실대학교 금융학부 교수	-	-	해당사항 없음	'25.03.20 ~현재	2028.03.19
구본준	Male	1951.12	회장	Not Registered	Full-time	전사 경영전반에 대한 업무	시카고대 경영학(석사) ㈜LG 부회장	-	-	최대주주(㈜LX홀딩스) 등기임원	'21.05.11 ~현재	-
나준호	Male	1968.09	부사장	Not Registered	Full-time	전략마케팅부문장	인하대학교 전자공학(석사) LG반도체㈜ 메모리연구소	20,636	-	계열회사(㈜LX세미콘) 미등기임원	'01.01.19 ~현재	-
윤호권	Male	1968.01	전무	Not Registered	Full-time	마케팅담당	The Ohio State Univ. 전자공학(박사) 어보브반도체 영업마케팅본부장	-	-	계열회사(㈜LX세미콘) 미등기임원	'24.08.05 ~현재	-
조정호	Male	1969.04	전무	Not Registered	Full-time	상품기획담당	KAIST 전기공학(석사) 삼성전자주 System LSI 전략마케팅실	-	-	계열회사(㈜LX세미콘) 미등기임원	'24.02.01 ~현재	-
나영선	Male	1971.05	상무	Not Registered	Full-time	개발부문장	한양대학교 전기전자공학(박사) LG전자주 SIC센터 DIC사업팀	2,500	-	계열회사(㈜LX세미콘) 미등기임원	'15.07.01 ~현재	-
한영수	Male	1971.09	상무	Not Registered	Full-time	제품 기획, 연구개발 등 총괄	KAIST 재료공학과(박사) ㈜LG 기획팀 상무	-	-	계열회사(㈜LX세미콘) 미등기임원	'21.01.01 ~현재	-
박정현	Male	1972.01	이사	Not Registered	Full-time	연구개발	경북대학교 반도체공학과(석사) ㈜LX세미콘 생산기술담당	-	-	계열회사(㈜LX세미콘) 미등기임원	'18.03.19 ~현재	-
사공영재	Male	1969.01	이사	Not Registered	Full-time	SCM담당	Aalto Univ. MBA(석사) LG전자주 SIC센터 SoC생산운영팀	-	-	계열회사(㈜LX세미콘) 미등기임원	'18.02.20 ~현재	-
이민호	Male	1973.02	이사	Not Registered	Full-time	연구개발	한양대학교 전자공학(석사) LG전자주 SIC센터 LSI팀	-	-	계열회사(㈜LX세미콘) 미등기임원	'17.04.17 ~현재	-
이지현	Female	1976.11	이사	Not Registered	Full-time	연구개발	서경대학교 전자공학(박사) LG전자주 SIC센터 지능형 SoC개발실	200	-	계열회사(㈜LX세미콘) 미등기임원	'19.08.12 ~현재	-
전현규	Male	1971.02	이사	Not Registered	Full-time	연구개발	KAIST 전기 및 전자공학(박사) 한국전자통신연구원	20,691	-	계열회사(㈜LX세미콘) 미등기임원	'03.09.01 ~현재	-
정용익	Male	1975.02	이사	Not Registered	Full-time	연구개발	고려대학교 전자공학(석사) 매그나칩반도체(유) Display Solution Division	3	-	계열회사(㈜LX세미콘) 미등기임원	'06.06.01 ~현재	-

김현호	Male	1976.09	이사	Not Registered	Full-time	연구개발	서울대학교 전기및전자공학(석사) LG전자(주) SIC센터	-	-	계열회사(㈜LX세미콘) 미등기임원	'15.07.01 ~ 현재	-
문용환	Male	1976.05	이사	Not Registered	Full-time	연구개발	인하대학교 전자공학(박사) ㈜LX세미콘 TV DDI개발담당	131	-	계열회사(㈜LX세미콘) 미등기임원	'04.01.17 ~ 현재	-
박진우	Male	1974.01	이사	Not Registered	Full-time	연구개발	경북대학교 전자공학(석사) LG전자(주) SIC센터	-	-	계열회사(㈜LX세미콘) 미등기임원	'21.12.20 ~ 현재	-
이종화	Male	1976.11	이사	Not Registered	Full-time	경영전략	성균관대학교 고분자공학(박사) ㈜LX홀딩스 경영전략팀	-	-	계열회사(㈜LX세미콘) 미등기임원	'22.11.15 ~ 현재	-

- 주1) 미등기임원(나준호, 전현규, 정용익, 문용환)의 경우 우리사주(무상주) 배정분을 포함하였습니다.  
주2) 김훈 사내이사는 어드밴스드파워디바이스테크놀로지(주)의 이사직을 겸직하고 있습니다.  
주3) 나준호 부사장은 2025년 1월 1일자로 전무에서 부사장으로 승진하였습니다.  
주4) 윤호권 전무는 2025년 1월 1일자로 상무에서 전무로 승진하였습니다.  
주5) 조장호 전무는 2025년 1월 1일자로 상무에서 전무로 승진하였습니다.  
주6) 문용환 이사는 2025년 1월 1일자로 신규 선임되었습니다.  
주7) 박진우 이사는 2025년 1월 1일자로 신규 선임되었습니다.  
주8) 이종화 이사는 2025년 1월 1일자로 신규 선임되었습니다.  
주9) 김범 이사는 2025년 3월 20일에 사외이사로 신규 선임되었습니다.  
주10) 위경우 이사는 2025년 3월 20일에 사외이사 임기가 만료되었습니다.  
주11) 김언영 이사는 2025년 3월 31일에 퇴임하였습니다.  
주12) 황경하 이사는 2025년 3월 31일에 퇴임하였습니다.

#### [임원의 겸직현황]

성명	직명	겸직현황	상근여부
노진서	기타비상무이사	(주)LX홀딩스 대표이사	상근
		(주)LX하우시스 대표이사	상근
		(주)LX엠엠에이 기타비상무이사	비상근
		(주)LX엠디아이 기타비상무이사	비상근
		(주)LX벤처스 기타비상무이사	비상근
		(주)LX글라스 기타비상무이사	비상근

#### 나. 직원 등의 현황

직원 등의 현황은 기업공시서식 작성기준에 따라 분기보고서에 기재하지 않습니다.  
(반기·사업보고서에 기재 예정)

## 2. Executive remuneration, etc.

임원의 보수 등은 기업공시서식 작성기준에 따라 분기보고서에 기재하지 않습니다.  
(반기·사업보고서에 기재 예정)

## IX. Matters Related to Affiliated Companies, etc.

계열회사 등에 관한 사항은 기업공시서식 작성기준에 따라 분기보고서에 기재하지 않습니다.  
(반기·사업보고서에 기재 예정)

## X. Details of Transactions with Major Shareholders, etc.

대주주 등과의 거래내용은 기업공시서식 작성기준에 따라 분기보고서에 기재하지 않습니다.  
(반기·사업보고서에 기재 예정)

## XI. Other Matters Necessary for Investor Protection

### 1. Progress and changes of disclosure information

보고서 작성기준일 현재 해당사항 없습니다.

### 2. Matters related to contingent liabilities, etc.

우발부채 등에 관한 사항은 기업공시서식 작성기준에 따라 분기보고서에 기재하지 않습니다.  
(반기·사업보고서에 기재 예정)

### 3. Matters related to sanctions, etc.

#### 가. 제재현황

당사 또는 당사의 임직원이 공시대상기간에 회사의 업무수행과 관련하여 상법, 자본시장과 금융투자업에 관한 법률(자본시장법), 주식회사 등의 외부감사에 관한 법률(외감법), 독점규제 및 공정거래에 관한 법률(공정거래법) 등 국내외 금융 및 조세 관련 법령을 위반하여 형사처벌 및 행정상의 조치를 받은 사실이 없습니다. 또한 금융위원회로부터 임원선임·재임 제한명령, 해임요구 등을 받은 사실이 없습니다.

#### 나. 한국거래소 등으로부터 받은 제재

보고서 작성기준일 현재 한국거래소 등 금융감독당국으로부터 제재조치를 받은 사실이 없습니다.

#### 다. 단기매매차익의 발생 및 반환에 관한 사항

보고서 작성기준일 현재 해당사항이 없습니다.

### 4. Other matters, including material matters occurred after the document preparation date

#### 가. 작성기준일 이후 발생한 주요사항

보고서 작성기준일 현재 해당사항이 없습니다.

#### **나. 합병 등의 사후정보**

보고서 작성기준일 현재 해당사항이 없습니다.

#### **다. 외국지주회사의 자회사 현황**

보고서 작성기준일 현재 해당사항이 없습니다.

#### **라. 녹색경영**

보고서 작성기준일 현재 해당사항이 없습니다.

## XII. Detailed Table

### 1. Status of subsidiaries subject to consolidation (Detailed)

연결대상 종속회사 현황(상세)은 기업공시서식 작성기준에 따라 분기보고서에 기재하지 않습니다.(반기·사업보고서에 기재 예정)

### 2. Status of affiliates (Detailed)

계열회사 현황(상세)은 기업공시서식 작성기준에 따라 분기보고서에 기재하지 않습니다.(반기·사업보고서에 기재 예정)

### 3. Status of investment in other corporations (Detailed)

타법인출자 현황(상세)은 기업공시서식 작성기준에 따라 분기보고서에 기재하지 않습니다.(반기·사업보고서에 기재 예정)

## 【Confirmation from Experts】

### 1. Confirmation from experts

보고서 작성기준일 현재 해당사항이 없습니다.

### 2. Relationship to experts

보고서 작성기준일 현재 해당사항이 없습니다.